

Telephone Numbers	Our Address	Supply Address
Information 24204000	57 K. Paleologou Str.	XXXXXXXXXXXXXXXXXXXX
Fault Reporting 1800	6036 Larnaca	XXXXXXXXXXXXXXXXXXXX
Account Service 1800		XXXXXXXXXXXXXXXXXXXX

Customer Name XXXXXXXXXXXXXXXXXXXX

Account Number **999 999 9999 9**

- 1 Tariff/s 05 -Domestic 55-Off Peak
- 2 Meter/s Number/s 597195 418545
- 3 Load Entitlement 40 AMP 1-Ph 20 AMP 3-Ph
- Receiver Group N1

XXXXXXXXXXXXXXXXXXXX
XXXXXXXXXXXXXXXXXXXX
XXXXXXXXXXXXXXXXXXXX
XXXXXXXXXXXXXXXXXXXX

V.A.T. Tax Point 15/09/2016
V.A.T. Registration No. 90000020 C
TIC 19101266G

Premise Id **9999999999**

Cycle: 11 Route: LAR54

METER READINGS (kWh)

ANALYSIS FOR THE PERIOD 15/07/2016 - 15/09/2016

Tariff	Present	Previous	M.F.	Consumption
4 05	33736	33412		324
55	71719	71719		

TARIFF 05 (With basic fuel price €300/M.T.)
Fixed Charge 3,86
120 kWh @ €0,1371 16,45
200 kWh @ €0,1453 29,06
4 kWh @ €0,1498 0,60
Reduction €49,97 @ -8% -4,00
Fuel Adjustment 324 kWh @ €0,009135- 11 -2,96
P.S.O. Charge 324 kWh @ €0,00065 12 0,21

Totals (€)	VAT %
43,22	19
3,04	
-0,24	
2,80	19
0,03	
8,74	
1,62	

- 5 Last year's corresp. consumption: 694 kWh
- 6 Current fuel price: €263,75/M.T.
- Coefficient of Fuel Adjustment: €0,0000126
- 7 Fuel adjustment charge: €-0,009135/kWh

Rate Total before V.A.T. 43,22
TARIFF 55 (With basic fuel price €300/M.T.)
Fixed Charge 3,04
Reduction €3,04 @ -8% -0,24
Rate Total before V.A.T. 2,80
Interest for late payment 0,03
Total V.A.T. 8,74
Charge for RES & ES 324 kWh @ €0,005 13 1,62

EUROPA DONNA Cyprus
Cyprus Breast Cancer Forum
Breast Cancer Awareness Month
Prevention Saves Lives
For more information: 22490849

AMOUNT DUE **€56,41** 14
Payable Until 10/10/2016

PAYMENT SLIP

11 LAR54 10/10/2016 15

Account Number	Check Digits 8	Billing Period	Payable Amount
999 999 9999 9	999	15/07/2016 - 15/09/2016	€56,41

Your EAC bill contains a great deal of useful Information. The purpose of these explanatory notes is to help you to improve your understanding of the electricity bill. The numbering on the bill opposite corresponds with the explanations that follow.



Telephone Numbers	Our Address	Supply Address
Information 24204000	57 K. Paleologou Str.	XXXXXXXXXXXXXXXXXXXX
Fault Reporting 1800	6036 Larnaca	XXXXXXXXXXXXXXXXXXXX
Account Service 1800		XXXXXXXXXXXXXXXXXXXX

Customer Name XXXXXXXXXXXXXXXXXXXX

Account Number **999 999 9999 9**

1 Tariff/s 05 -Domestic 55-Off Peak
Meter/s Number/s 597195 418545

2 Meter/s Description 46 AMP 1-CL 26 AMP 2-CL

1 Tariff/s Number/s 05 – Domestic 55 – Off Peak

V.A.T. Tax Point 15/09/2016
V.A.T. Registration No. 90000020 C
TIC 19101266G
Cycle: 11 Route: LAR

METER READINGS (kWh) ANALYSIS FOR THE PERIOD 15/07/2016

Tariff	Present	Previous	M.F.
4 05	33736	33412	324
55	71719	71719	

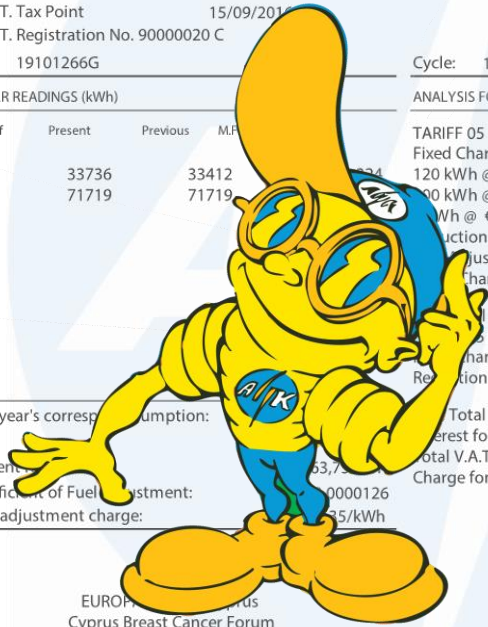
TARIFF 05 (With basic fuel price €300/M.T.)
Fixed Charge
120 kWh @ €0,1371
300 kWh @ €0,1453
Wh @ €0,1498
Adjustment €49,97 @ -8%
Adjustment 324 kWh @ €0,009135-11
Charge 324 kWh @ €0,00065 12

before V.A.T.
(With basic fuel price €300/M.T.)
Charge
Reduction €3,04 @ -8%

5 Last year's corresponding consumption: Total before V.A.T.

6 Current consumption: 63,73 Total V.A.T.
Interest for late payment

7 Coefficient of Fuel Adjustment: 0000126 Charge for RES & ES 324 kWh @ €0,005 13
Fuel adjustment charge: 35/kWh



EUROPEAN Breast Cancer Forum
Cyprus Breast Cancer Forum
Breast Cancer Awareness Month
Prevention Saves Lives
For more information: 22490849

1 Tariff/s Number/s 05 – Domestic 55 – Off Peak

The tariff determines the way in which your consumption is charged. EAC has formulated its tariffs in such a way as to take into account the connection voltage level and the customer's load profile, e.g. consumption behaviour, time of use (peak or off-peak hours). EAC has different tariffs for different electricity usage, classified as Domestic, Commercial (e.g. offices, shops), Industrial (e.g. factories, workshops), Street Lighting, Water Pumping and 55 – Off Peak (storage heaters). For each type of usage, the customer has a choice of tariffs. Some of course require that certain conditions are fulfilled by those eligible. Domestic customers have the choice of tariffs with codes: 05, 06, 07 and 08.

Tariff 05: Unit (kWh) charge increases as the level of consumption increases. There are five levels of charging based on consumption: (1) the first 120 units, (2) the next 200 units, (3) the next 180 units, (4) the next 500 units and (5) any additional units over 1,000.

Tariff 06: The charge for each unit (kWh) consumed during Off-Peak hours (see Note 4), is lower than the charge per unit consumed at all other periods.

Tariff 07: The charge for each unit (kWh) consumed during Peak Periods, (see Note 4), is higher than the charge per unit consumed at all other periods.

Tariff 08: This is a Special tariff for families with three or more dependent children and needy families that must fulfil certain criteria. Unit (kWh) charge increases as the level of consumption increases. There are three levels of charging based on consumption: (1) the first 1,000 units, (2) the next 1,000 units and (3) any additional units over 2,000.

Tariff 55 – Off Peak (storage heaters):

PAYMENT SLIP

Account Number	Check Digits 8	Billing Period	Payable Amount
999 999 9999 9	999	15/07/2016 - 15/09/2016	€56,41

Telephone Numbers	Our Address	Supply Address
Information 24204000	57 K. Paleologou Str.	XXXXXXXXXXXXXXXXXXXX
Fault Reporting 1800	6036 Larnaca	XXXXXXXXXXXXXXXXXXXX
Account Service 1800		XXXXXXXXXXXXXXXXXXXX
Customer Name XXXXXXXXXXXXXXXXXXXX		

Account Number **999 999 9999 9**

- 1 Tariff/s 05 -Domestic 55-Off Peak
- Meter/s Number/s 597195 418545
- 2 Load Entitlement 40 AMP 1-Ph 20 AMP 3-Ph

2 Load Entitlement 40 AMP 1-Ph 20 AMP 3-Ph

V.A.T. Tax Point 15/09/2016
V.A.T. Registration No. 90000020 C
TIC 19101266G

Cycle: 11 Route: LAR54

METER READINGS (kWh) ANALYSIS FOR THE PERIOD 15/07/2016 - 15/09/2016

Tariff	Present	Previous	M.F. Consumption
4 05	33736	33412	324
55	71719	71719	

TARIFF 05 (With basic fuel price €300/M.T.)
Fixed Charge 3,86
120 kWh @ €0,1371 16,45
200 kWh @ €0,1453 29,06
4 kWh @ €0,1498 0,60
Reduction €49,97 @ -8% -4,00
Fuel Adjustment 324 kWh @ €0,009135- 11 -2,96
P.S.O. Charge 324 kWh @ €0,00065 12 0,21

Rate Total before V.A.T. 43,22 19
TARIFF 55 (With basic fuel price €300/M.T.)
Fixed Charge 3,04
Reduction €3,04 @ -8% -0,24

- 5 Last year's corresp. consumption: 694 kWh
- 6 Current fuel price: €263,75/M.T.
- Coefficient of Fuel Adjustment: €0,0000126
- 7 Fuel adjustment charge: €-0,009135/kWh

Rate Total before V.A.T. 2,80 19
Interest for late payment 0,03
Total V.A.T. 8,74
Charge for RES & ES 324 kWh @ €0,005 13 1,62

EUROPA DONNA Cyprus
Cyprus Breast Cancer Forum
Breast Cancer Awareness Month
Prevention Saves Lives
For more information: 22490849

AMOUNT DUE **€56,41 14**
Payable Until 10/10/2016

2 Load Entitlement 40 AMP 1-Ph 20 AMP 3-Ph

This shows the Maximum Demand the customer is entitled and whether the load is single-phase or three-phase.

Please note that in some cases the load entitlement may not be shown.



PAYMENT SLIP

11 LAR54 10/10/2016 15

Account Number	Check Digits 8	Billing Period	Payable Amount
999 999 9999 9	999	15/07/2016 - 15/09/2016	€56,41

Telephone Numbers	Our Address	Supply Address
Information 24204000	57 K. Paleologou Str.	XXXXXXXXXXXXXXXXXXXX
Fault Reporting 1800	6036 Larnaca	XXXXXXXXXXXXXXXXXXXX
Account Service 1800		XXXXXXXXXXXXXXXXXXXX
Customer Name XXXXXXXXXXXXXXXXXXXX		

Account Number **999 999 9999 9**

- 1 Tariff/s 05 -Domestic 55-Off Peak
- 2 Meter/s Number/s 597195 418545
- 2 Load Entitlement 40 AMP 1-Ph 20 AMP 3-Ph
- 3 Receiver Group N1

3 Receiver Group N1

3 Receiver Group N1

(Relating to tariff 55 - storage heaters and 41 - water pumping)
Applicable where there is a time restriction in electricity usage.
The receiver Group (eg F4) determines the hours of electricity supply.

V.A.T. Registration No. 90000020 C
TIC 19101266G Cycle: 11 Route: LAR54

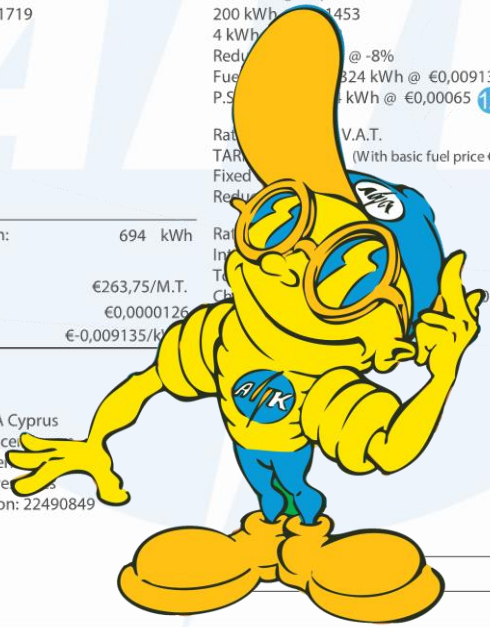
METER READINGS (kWh) ANALYSIS FOR THE PERIOD 15/07/2016 - 15/09/2016

Tariff	Present	Previous	M.F.	Consumption	TARIFF 05 (With basic fuel price €300/M.T.)
05	33736	33412		324	Fixed Charge 120 kWh @ €0,1371
55	71719	71719			200 kWh @ €0,1453
					4 kWh @ €0,1453
					Reduction @ -8%
					Fuel Charge 324 kWh @ €0,009135-11
					P.S. Charge kWh @ €0,00065 12

- 5 Last year's corresp. consumption: 694 kWh
- 6 Current fuel price: €263,75/M.T.
- Coefficient of Fuel Adjustment: €0,0000126
- 7 Fuel adjustment charge: €-0,009135/kWh 13

	3,04	
	-0,24	
	2,80	19
	0,03	
	8,74	
	1,62	

EUROPA DONNA Cyprus
Cyprus Breast Cancer
Breast Cancer Awareness
Prevention Saves Lives
For more information: 22490849



AMOUNT DUE €56,41 14
Payable Until 10/10/2016

PAYMENT SLIP

11 LAR54 10/10/2016 15

Account Number	Check Digits 8	Billing Period	Payable Amount
999 999 9999 9	999	15/07/2016 - 15/09/2016	€56,41

Telephone Numbers
Information 24204000
Fault Reporting 1800
Account Service 1800

Our Address
57 K. Paleologou Str.
6036 Larnaca

Supply Address
XXXXXXXXXXXXXXXXXXXX
XXXXXXXXXXXXXXXXXXXX
XXXXXXXXXXXXXXXXXXXX

Customer Name XXXXXXXXXXXXXXXXXXXX

Account Number **999 999 9999 9**

1 Tariff/s 05 -Domestic 55-Off Peak
2 Meter/s Number/s 597195 418545
3 Load Entitlement 40 AMP 1-Ph 20 AMP 3-Ph
Receiver Group N1

V.A.T. Tax Point 15/09/2016
V.A.T. Registration No. 90000020 C
TIC 19101266G
Cycle: 11 Route: LAR54

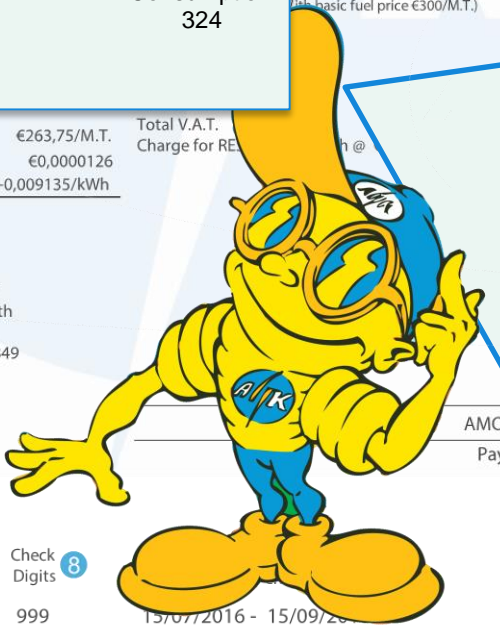
METER READINGS (kWh)					ANALYSIS FOR THE PERIOD 15/07/2016 - 15/07/2016	
Tariff	Present	Previous	M.F.	Consumption		
05	33736	33412		324	TARIFF 05 (With basic fuel price €300/M.T.)	
55	71719	71719			Fixed Charge 120 kWh @ €0,1371 200 kWh @ €0,1453 4 kWh @ €0,1498	

4 Meter Readings (kWh)				
Tariff	Present	Previous	M.F.	Consumption
05	33736	33412		324
55	71719	71719		

6 Current fuel price: €263,75/M.T.
Coefficient of Fuel Adjustment: €0,0000126
7 Fuel adjustment charge: €-0,009135/kWh

Total V.A.T. Charge for RE...
8% kWh @ €0,009135-11
h @ €0,00065 12

EUROPA DONNA Cyprus
Cyprus Breast Cancer Forum
Breast Cancer Awareness Month
Prevention Saves Lives
For more information: 22490849



PAYMENT SLIP

Account Number 999 999 9999 9
Check Digits 999
15/07/2016 - 15/09/2016
Payable €56,41

4 Meter Readings (kWh)				
Tariff	Present	Previous	M.F.	Consumption
05	33736	33412		324
55	71719	71719		

Peak (P), Off-Peak (O), Normal (N) Periods

These are the periods determined from time to time by EAC, at its absolute discretion and based on the system load curve the smoothing of which results in reduction of operating costs.

EAC identifies those periods during the day and the year when load transfer is desirable or undesirable and through its tariffs encourages or discourages electricity usage during these periods.

For the time being, these periods are:

P - consumption recorded during peak hours, i.e. between 09:00 and 17:00, Monday to Friday, June to September (relates to Tariff 07). **O** - consumption recorded during off-peak hours, i.e. between 23:00 and 07:00 (relates to Tariff 06).

N - consumption recorded during normal hours, i.e. between 07:00 and 23:00 (relates to Tariff 06).

N - consumption recorded during the months October-May, at all weekends of the year and between the hours 17:00 and 09:00 during the months June-September, when it relates to Tariff 07.

For bills on which the above information does not appear, charges are independent of the time of the year or the hours of consumption.

Telephone Numbers	Our Address	Supply Address
Information 24204000	57 K. Paleologou Str.	XXXXXXXXXXXXXXXXXXXX
Fault Reporting 1800	6036 Larnaca	XXXXXXXXXXXXXXXXXXXX
Account Service 1800		XXXXXXXXXXXXXXXXXXXX
Customer Name	XXXXXXXXXXXXXXXXXXXX	

Account Number **999 999 9999 9**

- 1 Tariff/s 05 -Domestic 55-Off Peak
- 2 Meter/s Number/s 597195 418545
- 3 Load Entitlement 40 AMP 1-Ph 20 AMP 3-Ph
- Receiver Group N1

XXXXXXXXXXXXXXXXXXXX
XXXXXXXXXXXXXXXXXXXX
XXXXXXXXXXXXXXXXXXXX
XXXXXXXXXXXXXXXXXXXX

V.A.T. Tax Point 15/09/2016
V.A.T. Registration No. 90000020 C
TIC 19101266G

Cycle: 11 Route: LAR54
ANALYSIS FOR THE PERIOD 15/07/2016 - 15/09/2016

METER READINGS (kWh)

Tariff	Present	Previous	M.F.	Consumption
05	33736	33412		324
55	71719	71719		

TARIFF 05 (With basic fuel price €300/M.T.)
Fixed Charge
120 kWh @ €0,1371
200 kWh @ €0,1453
4 kWh @ €0,1498
Reduction €49,97 @ -8%
Fuel Adjustment 324 kWh @ €0,009135
P.S.O. Charge 324 kWh @ €0,00065

5 Last year's corresp. consumption: 694 kWh

5 Last year's corresp. consumption: 694 kWh

7 Fuel adjustment charge: €-0,009135/kWh

Rate Total before V.A.T. 15,22 19
TARIFF 55 (With basic fuel price €300/M.T.)
Fixed Charge 3,04
Reduction €3,04 @ -8% -0,24
Rate Total before V.A.T. 2,80 19
Interest for late payment 0,03
Total V.A.T. 8,74
ES & ES 324 kWh @ €0,005 1,62

5 Last year's corresp. consumption: 694 kWh

Last year's corresponding consumption shows the electricity consumption during the respective months of the previous year.



EUROPA DONNA Cyprus
Cyprus Breast Cancer Forum
Breast Cancer Awareness Month
Prevention Saves Lives
For more information: 22490849

AMOUNT DUE €56,41 14
Payable Until 10/10/2016

PAYMENT SLIP

11 LAR54 10/10/2016 15

Account Number	Check Digits 8	Billing Period	Payable Amount
999 999 9999 9	999	15/07/2016 - 15/09/2016	€56,41

Telephone Numbers	Our Address	Supply Address
Information 24204000	57 K. Paleologou Str.	XXXXXXXXXXXXXXXXXXXX
Fault Reporting 1800	6036 Larnaca	XXXXXXXXXXXXXXXXXXXX
Account Service 1800		XXXXXXXXXXXXXXXXXXXX
Customer Name XXXXXXXXXXXXXXXXXXXX		

Account Number **999 999 9999 9**

- 1 Tariff/s 05 -Domestic 55-Off Peak
- 2 Meter/s Number/s 597195 418545
- 3 Load Entitlement 40 AMP 1-Ph 20 AMP 3-Ph
- Receiver Group N1

V.A.T. Tax Point 15/09/2016
V.A.T. Registration No. 90000020 C
TIC 19101266G

Premise Id **9999999999**

Cycle: 11 Route: LAR54

METER READINGS (kWh)

ANALYSIS FOR THE PERIOD 15/07/2016 - 15/09/2016

Tariff	Present	Previous	M.F. Consumption
05	33736	33412	324
55	71719	71719	

TARIFF 05 (With basic fuel price €300/M.T.)
Fixed Charge 2.86
120 kWh @ €0,1371
200 kWh @ €0,1453
4 kWh @ €0,1498
Reduction €49,97 @ -8%
Fuel Adjustment 324 kWh @ €0,009135
P.S.O. Charge 324 kWh @ €0,00065

5 Last year's corresp. consumption: 694 kWh

6 Current fuel price: €263,75/M.T.
Coefficient of Fuel Adjustment: €0,0000126

Rate Total before V.A.T.
TARIFF 55 (With basic fuel price €300/M.T.)
Fixed Charge
Reduction €3,04 @ -8%
Rate Total before V.A.T.
Interest for late payment
Total V.A.T.
Charge for RES & ES 324

6 Current fuel price: €263,75/M.T.

EUROPA DONNA Cyprus
Cyprus Breast Cancer Forum
Breast Cancer Awareness Month
Prevention Saves Lives
For more information: 22490849

PAYMENT SLIP

Account Number	Check Digits	Billing Period
999 999 9999 9	999	15/07/2016 - 15/09/2016



6 Current fuel price: €263,75/M.T.

This is the Weighted Average Fuel Price of the Month (WAFP) which is calculated every month on the basis of the fuel consumption and cost of fuel as shown below (in simplified form):

$$\frac{\text{Cost of fuel consumption of the month} + \text{COSMOS charge}}{\text{Amount of fuel consumed during the month}}$$

COSMOS (Cyprus Organisation for Storage and Management of Oil Stocks) Charge:

EAC pays a charge to COSMOS for every metric ton (M.T.) it receives.

The current fuel price which is calculated every month is used for:

- Monthly customers whose meter reading is recorded the month following the calculation of the current price.
- Bi-monthly customers whose meter reading is recorded two months after the calculation of the current price.

Telephone Numbers
Information 24204000 Our Address 57 K. Paleologou Str.
Fault Reporting 1800 6036 Larnaca
Account Service 1800
Customer Name XXXXXXXXXXXXXXXXXXXX
Supply Address
XXXXXXXXXXXXXXXXXXXX
XXXXXXXXXXXXXXXXXXXX
XXXXXXXXXXXXXXXXXXXX

Account Number **999 999 9999 9**

- 1 Tariff/s 05 -Domestic 55-Off Peak
- 2 Meter/s Number/s 597195 418545
- 3 Load Entitlement 40 AMP 1-Ph 20 AMP 3-Ph
- Receiver Group N1

V.A.T. Tax Point 15/09/2016
V.A.T. Registration No. 90000020 C
TIC 19101266G

METER READINGS (kWh) 15/07/2016 - 15/09/2016

Tariff	Present	Previous	M.F. Consum	Rate	Consumption	Price
05	33736	33411	324	12	324	€300/M.T.)
55	71719	71719		200	0,14	

4
 4 kW 498
 Reduction 97 @ -8%
 Fuel adjustment charge 324 kWh @ €0,009135-11
 00065 12
 Total Bill
 TARIFF 55 Fuel price €300/M.T.
 Fixed Charge
 Reduction €3,04 @ -8%

- 5 Last year's corresp. consumption: 694 kWh Rate Total before V.A.T.
- 6 Current fuel price: €263,75/M.T. Interest for late payment
- Coefficient of Fuel Adjustment: €0,0000126 Total V.A.T.
- 7 Fuel adjustment charge: €-0,009135/kWh Charge for RES & ES 324 kWh

7 Fuel adjustment charge - €0,009135/kWh

EUROPA DONNA Cyprus
Cyprus Breast Cancer Forum
Breast Cancer Awareness Month
Prevention Saves Lives
For more information: 22490849

AMOUNT DUE €56,41 14
Payable Until 10/10/2016

PAYMENT SLIP

11 LAR54 10/10/2016 15

Account Number	Check Digits 8	Billing Period	Payable Amount
999 999 9999 9	999	15/07/2016 - 15/09/2016	€56,41

7 Fuel adjustment charge - €0,009135/kWh

The per unit (kWh) charges are automatically adjusted by the fuel adjustment charge, to cover any increase or decrease in the cost of fuel per metric ton (M.T.).

The Fuel Adjustment Charge is calculated on the basis of the current and basic fuel price. The price of unit (KWh) charged shall be increased or decreased by the value of the coefficient of fuel adjustment currently in force (0.00126 cent) for every 5 cent increase or decrease in the basic price of €300 per Metric Ton (M.T.) of fuel cost.

The Fuel Adjustment Charge is equal to:

$$\frac{(\text{Current Fuel Price} - \text{Basic Fuel Price}) \times \text{Coefficient of Fuel Adjustment}}{5}$$

Basic Fuel Price: €300 / M.T

Coefficient of Fuel Adjustment: 0,00126 σεντ

The Fuel Adjustment Charge which is calculated every month is used for:

- Monthly customers whose meter reading is recorded the month following the calculation of the Fuel Adjustment Charge.
- Bi-monthly customers whose meter reading is recorded two months after the calculation of the Fuel Adjustment Charge.

Telephone Numbers	Our Address	Supply Address
Information 24204000	57 K. Paleologou Str.	XXXXXXXXXXXXXXXXXXXX
Fault Reporting 1800	6036 Larnaca	XXXXXXXXXXXXXXXXXXXX
Account Service 1800		XXXXXXXXXXXXXXXXXXXX
Customer Name	XXXXXXXXXXXXXXXXXXXX	

Account Number **999 999 9999 9**

- 1 Tariff/s 05 -Domestic 55-Off Peak
- 2 Meter/s Number/s 597195 418545
- 3 Load Entitlement 40 AMP 1-Ph 20 AMP 3-Ph
- Receiver Group N1

XXXXXXXXXXXXXXXXXXXX
XXXXXXXXXXXXXXXXXXXX
XXXXXXXXXXXXXXXXXXXX
XXXXXXXXXXXXXXXXXXXX

V.A.T. Tax Point 15/09/2016
V.A.T. Registration No. 90000020 C
TIC 19101266G

Premise Id **999999999**

Cycle: 11 Route: LAR54

METER READINGS (kWh)

ANALYSIS FOR THE PERIOD 15/07/2016 - 15/09/2016

Tariff	Present	Previous	M.F.	Consumption
4 05	33736	33412		324
55	71719	71719		

TARIFF 05 (With basic fuel price €300/M.T.)
Fixed Charge 3,86
120 kWh @ €0,1371 16,45
200 kWh @ €0,1453 29,06
4 kWh @ €0,1498 0,60
Reduction €49,97 @ -8% -4,00
Fuel Adjustment 324 kWh @ €0,009135- 11 -2,96
P.S.O. Charge 324 kWh @ €0,00065 12 0,21

Totals (€)	VAT %
43,22	19
3,04	
-0,24	

- 5 Last year's corresp. consumption: 694 kWh
- 6 Current fuel price: €263,75/M.T.
- Coefficient of Fuel Adjustment: €0,0000126
- 7 Fuel adjustment charge: €-0,009135/kWh

Rate Total before V.A.T.
TARIFF 55 (With basic fuel price €300/M.T.)
Fixed Charge
Reduction €3,04 @ -8%
Rate Total before V.A.T.
Interest for late payment
Total V.A.T.
Charge for RES & ES 324 kWh @ €0,005 13

EUROPA DONNA Cyprus
Cyprus Breast Cancer Forum
Breast Cancer Awareness Month
Prevention Saves Lives
For more information: 22490849

AMOUNT DUE €56,41 14
Payable Until 10/10/2016



8 Check digits 999

The three Check Digits are used with the account number for the online settlement of bills.

PAYMENT SLIP

11 LAR54 10/10/2016 15

8 Check digits 999

Account Number	Check Digits	Billing Period	Payable Amount
999 999 9999 9	999	15/07/2016 - 15/09/2016	€56,41

Telephone Numbers	Our Address	Supply Address
Information 24204000	57 K. Paleologou Str.	XXXXXXXXXXXXXXXXXXXX
Fault Reporting 1800	6036 Larnaca	XXXXXXXXXXXXXXXXXXXX
Account Service 1800		XXXXXXXXXXXXXXXXXXXX
Customer Name XXXXXXXXXXXXXXXXXXXX		

Account Number **999 999 9999 9**

- 1 Tariff/s 05 -Domestic 55-Off Peak
- 2 Meter/s Number/s 597195 418545
- 3 Load Entitlement 40 AMP 1-Ph 20 AMP 3-Ph
- Receiver Group N1

V.A.T. Tax Point 15/09/2016
V.A.T. Registration No. 90000020 C
TIC 19101266G

Premise Id **9999999999**

Cycle: 11 Route: LAR54

METER READINGS (kWh)

ANALYSIS FOR THE PERIOD

9 Premise Id 9999999999

Tariff	Present	Previous	M.F.	Consumption
4 05	33736	33412		324
55	71719	71719		

TARIFF 05 (With basic fuel price €300/M.T.)		
Fixed Charge	3,86	
120 kWh @ €0,1371	16,45	
200 kWh @ €0,1453	29,06	
4 kWh @ €0,1498	0,60	
Reduction €49,97 @ -8%	-4,00	
Fuel Adjustment 324 kWh @ €0,009135-11	-2,96	
P.S.O. Charge 324 kWh @ €0,00065-12	0,21	
Rate Total before V.A.T.	43,22	19
TARIFF 55 (With basic fuel price €300/M.T.)		
Fixed Charge	3,04	
Reduction €3,04 @ -8%	-0,24	
Rate Total before V.A.T.	2,80	19
Interest for late payment	0,03	
Total V.A.T.	8,74	
Charge for RES & ES 324 kWh @ €0,005-13	1,62	

- 5 Last year's corresp. consumption: 694 kWh
- 6 Current fuel price: €263,75/M.T.
- Coefficient of Fuel Adjustment: €0,0000126
- 7 Fuel adjustment charge: €-0,009135/kWh

EUROPA DONNA Cyprus
Cyprus Breast Cancer Forum
Breast Cancer Awareness Month
Prevention Saves Lives
For more information: 22490849

AMOUNT DUE **€56,41** 14
Payable Until 10/10/2016

PAYMENT SLIP

11 LAR54 10/10/2016-15

Account Number	Check Digits 8	Billing Period	Payable Amount
999 999 9999 9	999	15/07/2016 - 15/09/2016	€56,41

9 Premise Id 9999999999

The Premise ID is unique for each premise. It remains the same even if there is a change in tenancy and/or account number. For some EAC services, e.g. when reporting a fault to the EAC Contact Centre, customers may be asked to provide the 10 digit Premise ID.



Telephone Numbers	Our Address	Supply Address
Information 24204000	57 K. Paleologou Str.	XXXXXXXXXXXXXXXXXXXX
Fault Reporting 1800	6036 Larnaca	XXXXXXXXXXXXXXXXXXXX
Account Service 1800		XXXXXXXXXXXXXXXXXXXX
Customer Name XXXXXXXXXXXXXXXXXXXX		

Account Number **999 999 9999 9**

- 1 Tariff/s 05 -Domestic 55-Off Peak
- 2 Meter/s Number/s 597195 418545
- 3 Load Entitlement 40 AMP 1-Ph 20 AMP 3-Ph
- Receiver Group N1

V.A.T. Tax Point 15/09/2016
V.A.T. Registration No. 90000020 C
TIC 19101266G

Premise Id **9999999999**

Cycle: 11 Route: LAR54

METER READINGS (kWh)

ANALYSIS FOR THE PERIOD 15/07/2016 - 15/09/2016

Tariff	Present	Previous	M.F.	Consumption
05	33736	33412		324
55	71719	71719		

	Totals (€)	VAT %
TARIFF 05 (With basic fuel price €300/M.T.)		
Fixed Charge		
120 kWh @ €0,1453	29,06	
4 kWh @ €0,1498	0,60	
Reduction €49,97 @ -8%	-4,00	
Fuel Adjustment 324 kWh @ €0,009135-11	-2,96	
P.S.O. Charge 324 kWh @ €0,00065 12	0,21	
Rate Total before V.A.T.	43,22	19
TARIFF 55 (With basic fuel price €300/M.T.)		
Fixed Charge	3,04	
Reduction €3,04 @ -8%	-0,24	
Rate Total before V.A.T.	2,80	19
Interest for late payment	0,03	
Total V.A.T.	8,74	
Charge for RES & ES 324 kWh @ €0,005 13	1,62	

- 5 Last year's corresp. consumption: 694 kWh
- 6 Current fuel price: €263,75/M.T.
- Coefficient of Fuel Adjustment: €0,0000126
- 7 Fuel adjustment charge: €-0,009135/kWh

EUROPA DONNA Cyprus
Cyprus Breast Cancer Forum
Breast Cancer Awareness Month
Prevention Saves Lives
For more information: 22490849

AMOUNT DUE **€56,41**
Payable Until 10/10/2016

PAYMENT SLIP

11 LAR54 10/10/2016 15

Account Number	Check Digits 8	Billing Period	Payable Amount
999 999 9999 9	999	15/07/2016 - 15/09/2016	€56,41

1 Analysis for the period 31/07/2016 – 31/08/2016

It shows the period to which the bill refers.



Telephone Numbers	Our Address	Supply Address
Information 24204000	57 K. Paleologou Str.	XXXXXXXXXXXXXXXXXXXX
Fault Reporting 1800	6036 Larnaca	XXXXXXXXXXXXXXXXXXXX
Account Service 1800		XXXXXXXXXXXXXXXXXXXX

Customer Name XXXXXXXXXXXXXXXXXXXX

Account Number **999 999 9999 9**

- 1 Tariff/s 05 -Domestic 55-Off Peak
- 2 Meter/s Number/s 597195 418545
- 3 Load Entitlement 40 AMP 1-Ph 20 AMP 3-Ph
- Receiver Group N1

XXXXXXXXXXXXXXXXXXXX
XXXXXXXXXXXXXXXXXXXX
XXXXXXXXXXXXXXXXXXXX
XXXXXXXXXXXXXXXXXXXX

V.A.T. Tax Point 15/09/2016
V.A.T. Registration No. 90000020 C
TIC 19101266G

Premise Id
999999999

Cycle: 11 Route: LAR54

METER READINGS (kWh) ANALYSIS FOR THE PERIOD 15/07/2016 - 15/09/2016 10 Totals (€)

Tariff	Present	Previous	M.F. Consumption
4 05	33736	33412	324
55	71719	71719	

TARIFF 05 (With basic fuel price €300/M.T.)	
Fixed Charge	3,86
120 kWh @ €0,1371	16,45
200 kWh @ €0,1453	29,06
4 kWh @ €0,1498	0,60
Reduction €49,97 @ -8%	-4,00
Fuel Adjustment 324 kWh @ €0,009135-11	-2,96
P.S.O. Cha	0,21

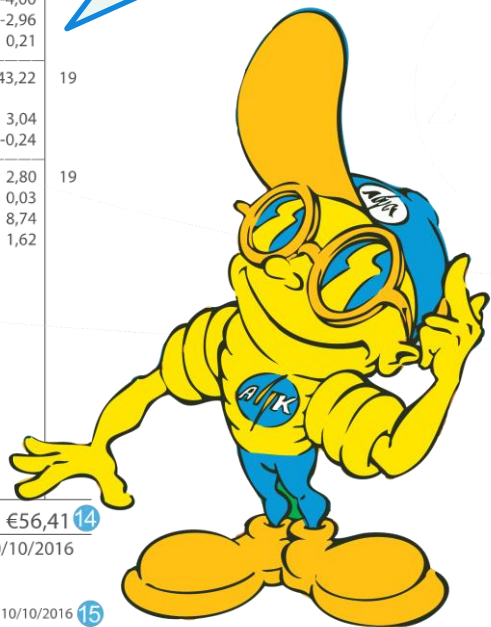
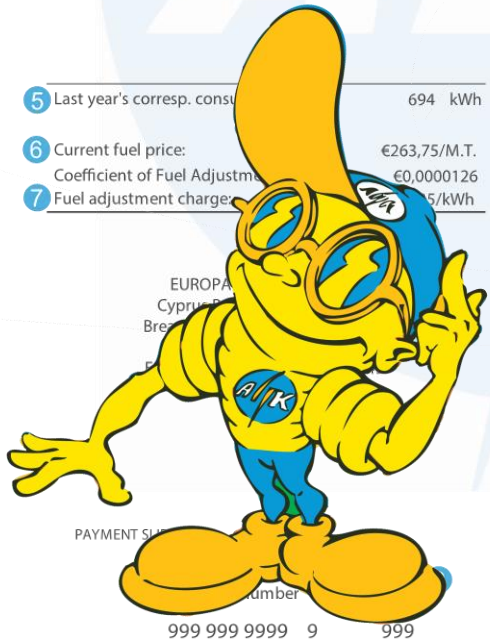
1 Fuel Adjustment 324 kWh @ - €0,009135

Rate Total	43,22	19
TARIFF 55		
Fixed Charge	3,04	
Reduction €3,04 @ -8%	-0,24	
Rate Total before V.A.T.	2,80	19
Interest for late payment	0,03	
Total V.A.T.	8,74	
Charge for RES & ES 324 kWh @ €0,005 13	1,62	

- 5 Last year's corresp. consu 694 kWh
- 6 Current fuel price: €263,75/M.T.
- Coefficient of Fuel Adjustm €0,0000126
- 7 Fuel adjustment charge 5/kWh

1 Fuel Adjustment 324 kWh @ - €0,009135

The Fuel Adjustment is the result of the increase/decrease in the cost of fuel. It is calculated by multiplying the number of kilowatt hours (kWh) by the Fuel Adjustment Charge (see note 7).



AMOUNT DUE €56,41 14
Payable Until 10/10/2016

PAYMENT SUM 11 LAR54 10/10/2016 15

Account Number 999 999 9999 9 999 Billing Period 15/07/2016 - 15/09/2016 Payable Amount €56,41

Telephone Numbers	Our Address	Supply Address
Information 24204000	57 K. Paleologou Str.	XXXXXXXXXXXXXXXXXXXX
Fault Reporting 1800	6036 Larnaca	XXXXXXXXXXXXXXXXXXXX
Account Service 1800		XXXXXXXXXXXXXXXXXXXX
Customer Name XXXXXXXXXXXXXXXXXXXX		

Account Number **999 999 9999 9**

- 1 Tariff/s 05 -Domestic 55-Off Peak
- 2 Meter/s Number/s 597195 418545
- 3 Load Entitlement 40 AMP 1-Ph 20 AMP 3-Ph
- Receiver Group N1

V.A.T. Tax Point 15/09/2016
V.A.T. Registration No. 90000020 C
TIC 19101266G

Premise Id
9999999999

Cycle: 11 Route: LAR54

METER READINGS (kWh) ANALYSIS FOR THE PERIOD 15/07/2016 - 15/09/2016 **10** Totals (€)

Tariff	Present	Previous	M.F.	Consumption		
4 05	33736	33412		324	TARIFF 05 (With basic fuel price €300/M.T.)	
55	71719	71719			Fixed Charge	3,86
					120 kWh @ €0,1371	16,45
					200 kWh @ €0,1453	29,06
					4 kWh @ €0,1498	0,60
					Reduction €49,97 @ -8%	-4,00
					Fuel Adjustment 324 kWh @ €0,009135- 11	-2,96
					P.S.O. Charge 324 kWh @ €0,00065 12	0,21
						43,22 19

1 P.S.O. Charge 324kWh @ €0,00065

- 5 Last year's corresp. consumption: 694 kWh
- 6 Current fuel price: €263,75/M.T.
- Coefficient of Fuel Adjustment: €0,0000126
- 7 Fuel adjustment charge: €-0,009135/kWh

Rate Total before V.A.T. 2,80 19
Interest for late payment 0,03
Total V.A.T. 8,74
Charge for RES & ES 324 kWh @ €0,005 **13** 1,62

AMOUNT DUE **€56,41 14**
Payable Until 10/10/2016

PAYMENT SLIP

11 LAR54 10/10/2016 **15**

Account Number	Check Digits 8	Billing Period	Payable Amount
999 999 9999 9	999	15/07/2016 - 15/09/2016	€56,41

1 P.S.O. Charge 324kWh @ €0,00065

The Cyprus Energy Regulatory Authority (CERA), decided on 23/6/2010 (Decision No. 01/2010) to allow the Electricity Authority of Cyprus (EAC) to recover its costs towards the Public Service Obligations and specifically the loss of revenue, as a result of introducing/ applying the new tariff for Large and Needy Families (Tariff code 08).

The recovery of costs shall be implemented by charging €0,00065 for every kWh consumed on all electricity bills. This charge is considered as a tariff element/parameter and is subject to VAT.



Telephone Numbers Our Address Supply Address
 Information 24204000 57 K. Paleologou Str. XXXXXXXXXXXXXXXXXXXX
 Fault Reporting 1800 6036 Larnaca XXXXXXXXXXXXXXXXXXXX
 Account Service 1800 XXXXXXXXXXXXXXXXXXXX

Customer Name XXXXXXXXXXXXXXXXXXXX

Account Number **999 999 9999 9**

- 1 Tariff/s 05 -Domestic 55-Off Peak
- 2 Meter/s Number/s 597195 418545
- 3 Load Entitlement 40 AMP 1-Ph 20 AMP 3-Ph
- Receiver Group N1

XXXXXXXXXXXXXXXXXXXX
 XXXXXXXXXXXXXXXXXXXX
 XXXXXXXXXXXXXXXXXXXX
 XXXXXXXXXXXXXXXXXXXX

V.A.T. Tax Point 15/09/2016
 V.A.T. Registration No. 90000020 C
 TIC 19101266G

Premise I
 99999999

Cycle: 11 Route: LAR54

METER READINGS (kWh) ANALYSIS FOR THE PERIOD 15/07/2016 - 15/09/2016 10 Totals (€)

Tariff	Present	Previous	M.F.	Consumption		
4 05	33736	33412		324	TARIFF 05 (With basic fuel price €300/M.T.)	
55	71719	71719			Fixed Charge	3,00
					120 kWh @ €0,1371	16,00
					200 kWh @ €0,1453	29,00
					4 kWh @ €0,1498	0,60
					Reduction €49,97 @ -8%	-4,00
					Fuel Adjustment 324 kWh @ €0,009135- 11	-2,96
					P.S.O. Charge 324 kWh @ €0,00065 12	0,21
					Rate Total before V.A.T.	43,22 19
					TARIFF 55 (With basic fuel price €300/M.T.)	
					Fixed Charge	3,04
					Reduction €3,04 @ -8%	-0,24
					Rate Total before V.A.T.	2,80 19
					Interest for late payment	0,03
					Total V.A.T.	8,74
					Charge for RES & ES 324 kWh @ €0,005 13	1,62

- 5 Last year's corresp. consumption: 694 kWh
- 6 Current fuel price: €263,75/M.T.
- Coefficient of Fuel Adjustment: €0,0000126
- 7 Fuel adjustment charge: €-0,009135/kWh

1 Charge for RES & ES 324 KWh @ €0,005

1 Charge for RES & ES 324KWh @ €0,005

The special RES charge has been imposed by Law N.33(I)/2003 and is chargeable to all customers based on their electricity consumption. The resulting amount is deposited by EAC in the Special Fund for RES. Law N.33(I)/2003 provides for the promotion and encouragement of the use of Renewable Energy Sources (RES) (wind or solar energy, biomass, etc.) and the creation of a Special Fund for subsidising or financing them. As from 15/5/2012 the RES charge is 0,50 cents for every unit (kWh) consumed.

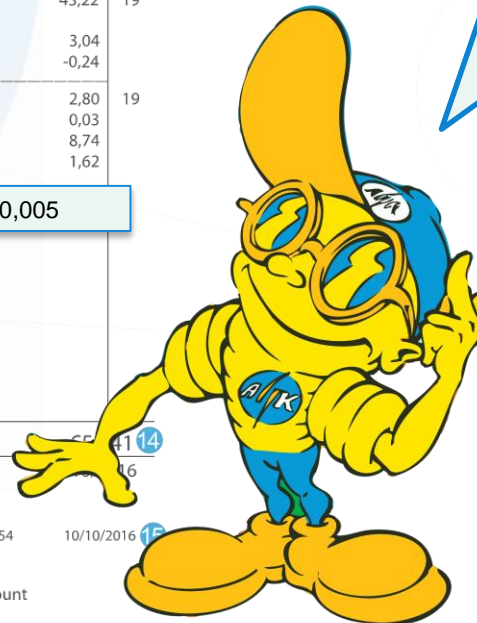
EUROPA DONNA Cyprus
 Cyprus Breast Cancer Forum
 Breast Cancer Awareness Month
 Prevention Saves Lives
 For more information: 22490849

AMOUNT DUE €56,41 14
 Payable Until 10/10/2016 15

PAYMENT SLIP

11 LAR54 10/10/2016 15

Account Number Check Digits 8 Billing Period Payable Amount
 999 999 9999 9 999 15/07/2016 - 15/09/2016 €56,41



Telephone Numbers	Our Address	Supply Address
Information 24204000	57 K. Paleologou Str.	XXXXXXXXXXXXXXXXXXXX
Fault Reporting 1800	6036 Larnaca	XXXXXXXXXXXXXXXXXXXX
Account Service 1800		XXXXXXXXXXXXXXXXXXXX
Customer Name XXXXXXXXXXXXXXXXXXXX		

Account Number **999 999 9999 9**

- 1 Tariff/s 05 -Domestic 55-Off Peak
- 2 Meter/s Number/s 597195 418545
- 3 Load Entitlement 40 AMP 1-Ph 20 AMP 3-Ph
- Receiver Group N1

XXXXXXXXXXXXXXXXXXXX
XXXXXXXXXXXXXXXXXXXX
XXXXXXXXXXXXXXXXXXXX
XXXXXXXXXXXXXXXXXXXX

V.A.T. Tax Point 15/09/2016
V.A.T. Registration No. 90000020 C
TIC 19101266G

Cycle: 11 Route: LAR54

METER READINGS (kWh) ANALYSIS FOR THE PERIOD 15/07/2016 - 15/09/2016

Tariff	Present	Previous	M.F.	Consumption
4 05	33736	33412		324
55	71719	71719		

TARIFF 05 (With basic fuel price €300/M.T.)
Fixed Charge
120 kWh @ €0,1371
200 kWh @ €0,1453
4 kWh @ €0,1498
Reduction €49,97 @ -8%
Fuel Adjustment 324 kWh @ €0,009135-11
P.S.O. Charge 324 kWh @ €0,00065 12

-2,96
0,21

Rate Total before V.A.T.
TARIFF 55 (With basic fuel price €300/M.T.)
Fixed Charge
Reduction €3,04 @ -8%

19

- 5 Last year's corresp. consumption: 694 kWh
- 6 Current fuel price: €263,75/M.T.
- Coefficient of Fuel Adjustment: €0,0000126
- 7 Fuel adjustment charge: €-0,009135/kWh

Rate Total before V.A.T.
Interest for late payment
Total V.A.T.
Charge for RES & ES 324 kWh @ €0,005 13

2,80
0,03
8,74
1,62

1 Amount Due €56.41

This is the sum of all the charges (consumption, VAT, RES and others) less any credit (prepayments, credits in accordance with the Customer's Charter) which the customer must pay EAC by the date shown on the bill, at any EAC Customer Service Centre, Bank or Cooperative Society, or by Standing Order or through internet.

EUROPA DONNA Cyprus
Cyprus Breast Cancer Forum
Breast Cancer Awareness Month
Prevention Saves Lives
For more information: 22490849

1 Amount Due €56.41

AMOUNT DUE €56,41 14
Payable Until 10/10/2016

PAYMENT SLIP

11 LAR54 10/10/2016 15

Account Number	Check Digits 8	Billing Period	Payable Amount
999 999 9999 9	999	15/07/2016 - 15/09/2016	€56,41



Telephone Numbers	Our Address	Supply Address
Information 24204000	57 K. Paleologou Str.	XXXXXXXXXXXXXXXXXXXX
Fault Reporting 1800	6036 Larnaca	XXXXXXXXXXXXXXXXXXXX
Account Service 1800		XXXXXXXXXXXXXXXXXXXX

Customer Name XXXXXXXXXXXXXXXXXXXX

Account Number **999 999 9999 9**

- 1 Tariff/s 05 -Domestic 55-Off Peak
- 2 Meter/s Number/s 597195 418545
- 3 Load Entitlement 40 AMP 1-Ph 20 AMP 3-Ph
- Receiver Group N1

V.A.T. Tax Point 15/09/2016
V.A.T. Registration No. 90000020 C
TIC 19101266G

Cycle: 11 Route: LAR54

METER READINGS (kWh) ANALYSIS FOR THE PERIOD 15/07/2016 - 15/09/2016

Tariff	Present	Previous	M.F.	Consumption
4 05	33736	33412		324
55	71719	71719		

TARIFF 05 (With basic fuel price €300/M.T.)

Fixed Charge 16,45
120 kWh @ €0,1371 29,06
200 kWh @ €0,1453 0,60
4 kWh @ €0,1498 -4,00
Reduction €49,97 @ -8% -2,96
Fuel Adjustment 324 kWh @ €0,009135- 11
P.S.O. Charge 324 kWh @ €0,00065 12 0,21

Rate Total before V.A.T. 43,22 19
TARIFF 55 (With basic fuel price €300/M.T.)
Fixed Charge 3,04
Reduction €3,04 @ -8% -0,24

5 Last year's corresp. consumption: 694 kWh

6 Current fuel price: €263,75/M.T.
Coefficient of Fuel Adjustment: €0,0000126

7 Fuel adjustment charge: €-0,009135/kWh

Rate Total before V.A.T. 2,80 19
Interest for late payment 0,03
Total V.A.T. 8,74
Charge for RES & ES 324 kWh @ €0,005 13 1,62

EUROPA DONNA Cyprus
Cyprus Breast Cancer Forum
Breast Cancer Awareness Month
Prevention Saves Lives
For more information: 22490849

AMOUNT DUE €56,41 14

1 Payable Unit 10/10/2016

PAYMENT SLIP

11 LAR54 10/10/2016 15

Account Number	Check Digits 8	Billing Period	Payable Amount
999 999 9999 9	999	15/07/2016 - 15/09/2016	€56,41

1 Payable Unit 10/10/2016

This shows the period available to the customer to settle the bill. When this period expires, payment may be made at any EAC Customer Service Centre or online through the EAC website. In case of non-payment, the disconnection process begins.

Note: Any figures or other information were up-to-date at the time of printing. They are open to future revision.



Telephone Numbers	Our Address	Supply Address
Information 24204000	57 K. Paleologou Str.	XXXXXXXXXXXXXXXXXXXX
Fault Reporting 1800	6036 Larnaca	XXXXXXXXXXXXXXXXXXXX
Account Service 1800		XXXXXXXXXXXXXXXXXXXX
Customer Name XXXXXXXXXXXXXXXXXXXX		

Account Number **999 999 9999 9**

- 1 Tariff/s 05 -Domestic 55-Off Peak
- 2 Meter/s Number/s 597195 418545
- 3 Load Entitlement 40 AMP 1-Ph 20 AMP 3-Ph
- Receiver Group N1

XXXXXXXXXXXXXXXXXXXX
XXXXXXXXXXXXXXXXXXXX
XXXXXXXXXXXXXXXXXXXX
XXXXXXXXXXXXXXXXXXXX

V.A.T. Tax Point 15/09/2016
V.A.T. Registration No. 90000020 C
TIC 19101266G

Premise Id
9999999999

Cycle: 11 Route: LAR54

METER READINGS (kWh) ANALYSIS FOR THE PERIOD 15/07/2016 - 15/09/2016 **10** Totals (€) VAT %

Tariff	Present	Previous	M.F.	Consumption		Totals (€)	VAT %
4 05	33736	33412		324	TARIFF 05 (With basic fuel price €300/M.T.)	3,86	
55	71719	71719			Fixed Charge	16,45	
					120 kWh @ €0,1371	29,06	
					200 kWh @ €0,1453	0,60	
					4 kWh @ €0,1498	-4,00	
					Reduction €49,97 @ -8%	-2,96	
					Fuel Adjustment 324 kWh @ €0,009135- 11	0,21	
					P.S.O. Charge 324 kWh @ €0,00065 12	43,22	19
					Rate Total before V.A.T.	3,04	
					TARIFF 55 (With basic fuel price €300/M.T.)	-0,24	
					Fixed Charge	2,80	19
					Reduction €3,04 @ -8%	0,03	
5 Last year's corresp. consumption:				694 kWh	Rate Total before V.A.T.	8,74	
6 Current fuel price:				€263,75/M.T.	Interest for late payment	1,62	
Coefficient of Fuel Adjustment:				€0,0000126	Total V.A.T.		
7 Fuel adjustment charge:				€-0,009135/kWh	Charge for RES & ES 324 kWh @ €0,005 13		

EUROPA DONNA Cyprus
Cyprus Breast Cancer Forum
Breast Cancer Awareness Month
Prevention Saves Lives
For more information: 22490849

AMOUNT DUE **€56,41 **14****
Payable Until 10/10/2016

PAYMENT SLIP

11 LAR54 10/10/2016 **15**

Account Number	Check Digits 8	Billing Period	Payable Amount
999 999 9999 9	999	15/07/2016 - 15/09/2016	€56,41

For your best possible service when paying your bills at an EAC Customer Service Centre, you should:

- Present your bill (original)
- If paying by cheque, Please make sure that it is duly signed and completed when you present it to the cashier.

On our website you can also find information concerning Tariffs as well as answers to frequently asked questions.

