

DISTRIBUTION SYSTEM OPERATOR SYSTEM OPERATION

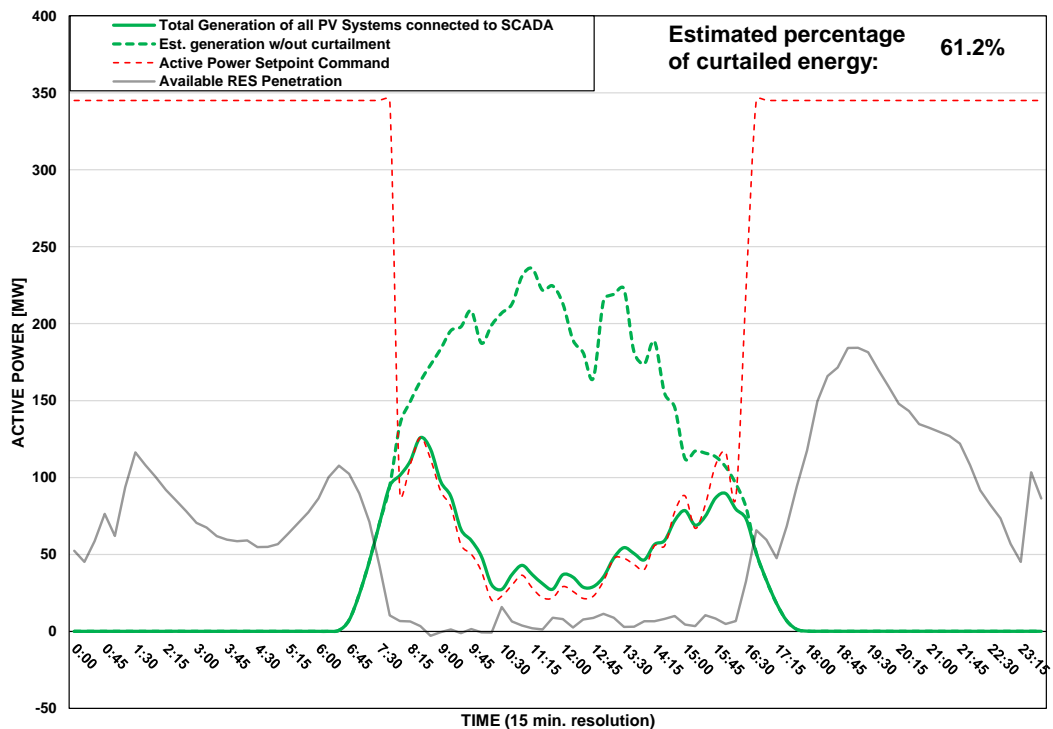


Αρχή Ηλεκτρισμού Κύπρου
Διανομή

PV Generation Curtailment Report

Date of Curtailment:	01/03/2025	Cut-off of PV Systems using RIPPLE:
Start of Curtailment	8:00	Cut-off areas using RIPPLE: NIC 3
End of Curtailment	16:30	
Instruction from TSOC	YES	Start of cut-off: 10:15 End of cut-off: 14:00
Reason of Curtailment:	RES-E Generation Restriction due to low loading of the electrical system	
Total Estimated Energy of the day:	1618.1 MWh	Total Est. Energy of the cut-off PV systems using RIPPLE: 93.1MWh
Total Estimated Curtailed Energy:	990.6 MWh	
Percentage of Curtailed Energy:	61.2%	

Scada PVs Generation on 01/03/2025 (curtailment time: 08:00 - 16:30)



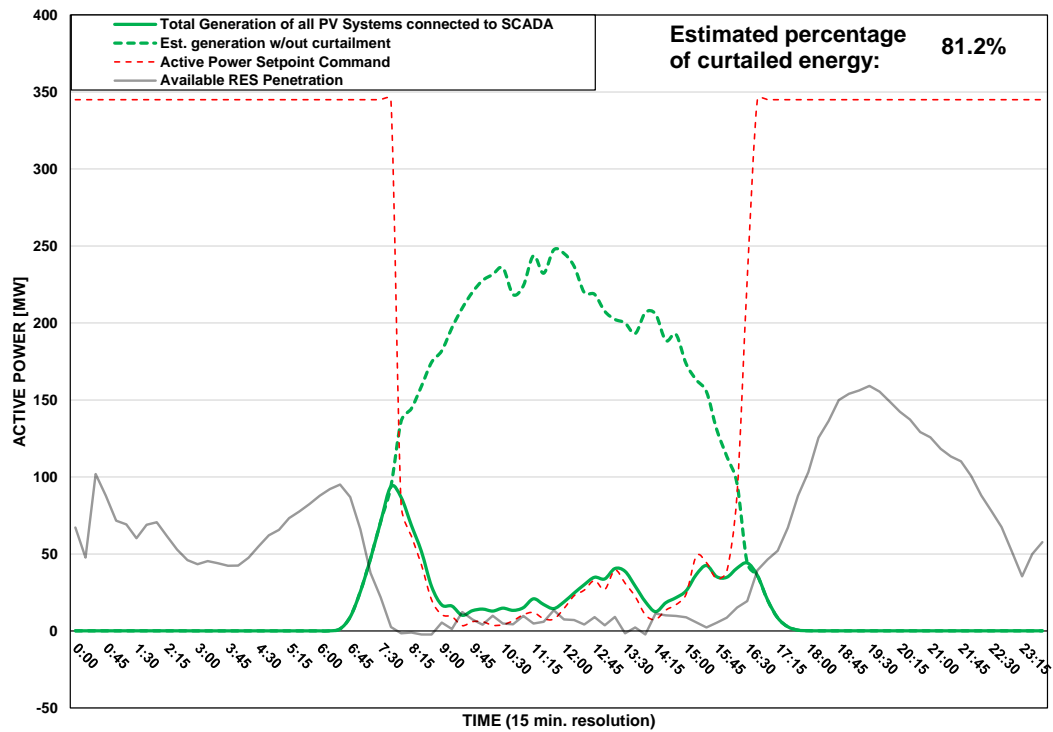
DISTRIBUTION SYSTEM OPERATOR SYSTEM OPERATION



PV Generation Curtailment Report

Date of Curtailment:	02/03/2025	Cut-off of PV Systems using RIPPLE and IoT:
Start of Curtailment	8:00	Cut-off areas using RIPPLE: NIC 1, NIC 3, LAR 1, LAR 2, LIM 1, LIM 2, PAF 1, PAF 2
End of Curtailment	16:15	Cut-off areas using IoT: PV-LCA/FAM1, PV-LIM3, PV-PAF3
Instruction from TSOC	YES	Start of cut-off: 08:45 End of cut-off: 16:45
Reason of Curtailment:	RES-E Generation Restriction due to low loading of the electrical system	
Total Estimated Energy of the day:	1749.1 MWh	Total Est. Energy of the cut-off PV systems using RIPPLE: 724.8MWh
Total Estimated Curtailed Energy:	1419.7 MWh	Total Est. Energy of the cut-off PV systems using IoT: 106.1MWh
Percentage of Curtailed Energy:	81.2%	

Scada PVs Generation on 02/03/2025 (curtailment time: 08:00 - 16:15)



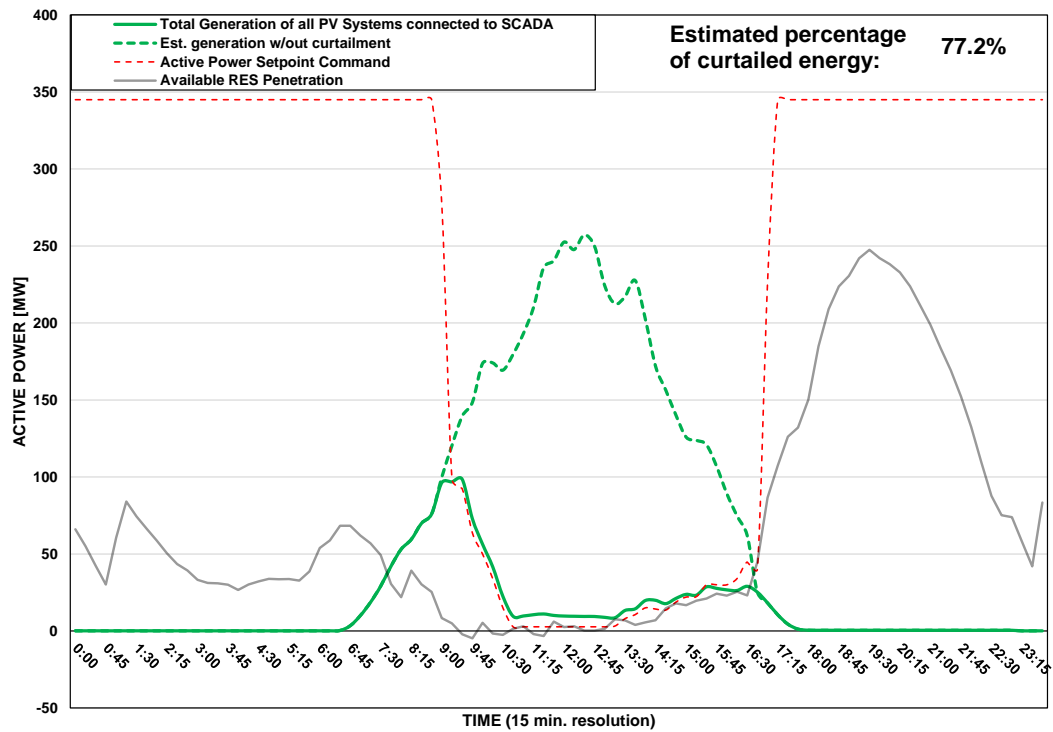
DISTRIBUTION SYSTEM OPERATOR SYSTEM OPERATION



PV Generation Curtailment Report

Date of Curtailment:	03/03/2025	<u>Cut-off of PV Systems using RIPPLE and IoT:</u>
Start of Curtailment	9:00	Cut-off areas using RIPPLE: NIC 1, NIC 3, LAR 1, LAR 2, LIM 1, LIM 2, PAF 1, PAF 2
End of Curtailment	16:30	Cut-off areas using IoT: PV-NIC1, PV-NIC4, PV-LCA/FAM1, PV-LCA/FAM3, PV-LIM3, PV-PAF3
Instruction from TSOC	YES	Start of cut-off: 10:30 End of cut-off: 16:15
Reason of Curtailment:	RES-E Generation Restriction due to low loading of the electrical system	
Total Estimated Energy of the day:	1445 MWh	Total Est. Energy of the cut-off PV systems using RIPPLE: 473.2MWh
Total Estimated Curtailed Energy:	1116 MWh	Total Est. Energy of the cut-off PV systems using IoT: 174.9MWh
Percentage of Curtailed Energy:	77.2%	

Scada PVs Generation on 03/03/2025 (curtailment time: 09:00 - 16:30)



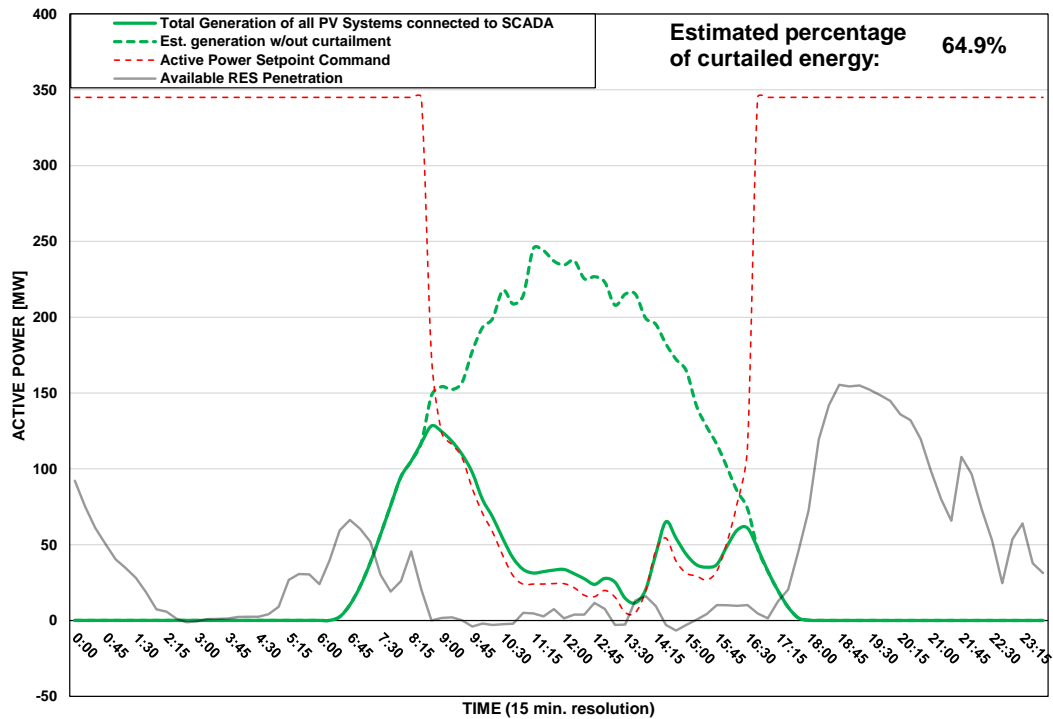
DISTRIBUTION SYSTEM OPERATOR SYSTEM OPERATION



PV Generation Curtailment Report

Date of Curtailment:	04/03/2025
Start of Curtailment	8:45
End of Curtailment	16:30
Instruction from TSOC	YES
Reason of Curtailment:	RES-E Generation Restriction due to low loading of the electrical system
Total Estimated Energy of the day:	1633.2 MWh
Total Estimated Curtailed Energy:	1060.5 MWh
Percentage of Curtailed Energy:	64.9%

Scada PVs Generation on 04/03/2025 (curtailment time: 08:45 - 16:30)



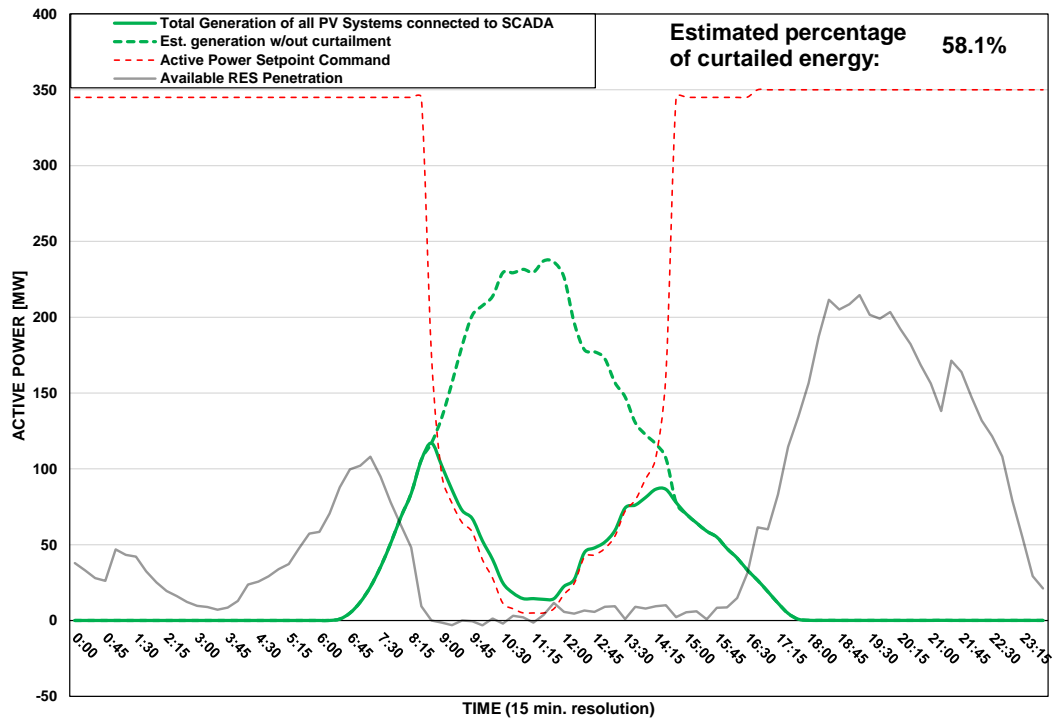
DISTRIBUTION SYSTEM OPERATOR SYSTEM OPERATION



PV Generation Curtailment Report

Date of Curtailment:	05/03/2025	Cut-off of PV Systems using RIPPLE:
Start of Curtailment	8:45	Cut-off areas using RIPPLE: PAF 2
End of Curtailment	14:30	
Instruction from TSOC	YES	Start of cut-off: 11:15 End of cut-off: 13:00
Reason of Curtailment:	RES-E Generation Restriction due to low loading of the electrical system	
Total Estimated Energy of the day:	1309 MWh	Total Est. Energy of the cut-off PV systems using RIPPLE: 22.1MWh
Total Estimated Curtailed Energy:	760.2 MWh	
Percentage of Curtailed Energy:	58.1%	

Scada PVs Generation on 05/03/2025 (curtailment time: 08:45 - 14:30)



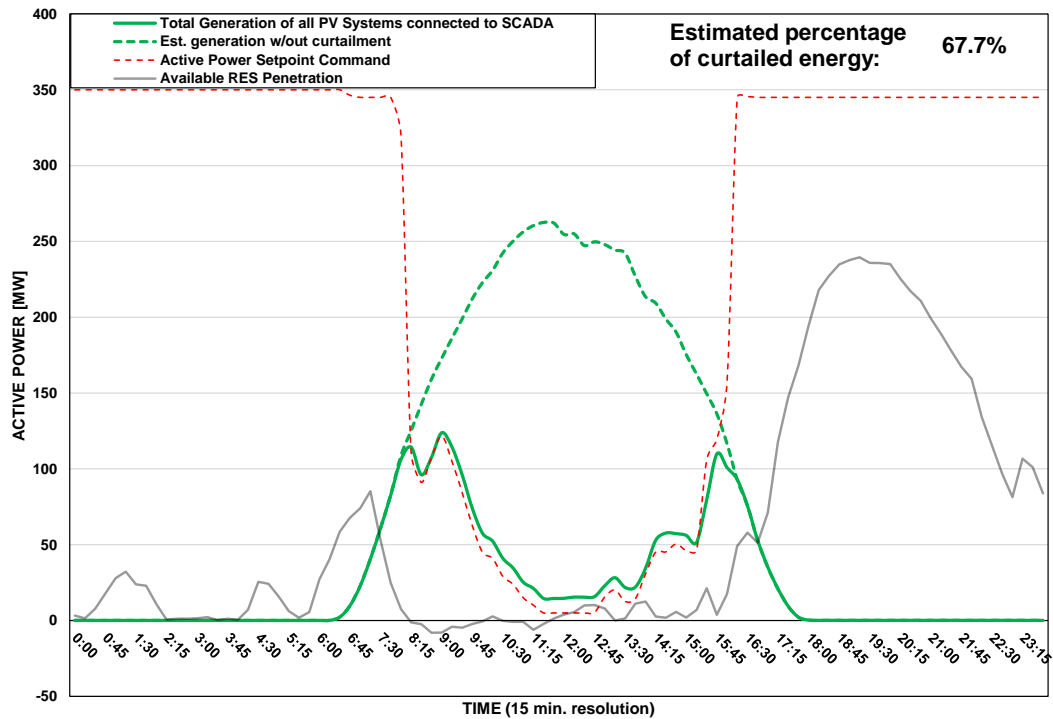
DISTRIBUTION SYSTEM OPERATOR SYSTEM OPERATION



PV Generation Curtailment Report

Date of Curtailment:	06/03/2025
Start of Curtailment	8:00
End of Curtailment	16:00
Instruction from TSOC	YES
Reason of Curtailment:	RES-E Generation Restriction due to low loading of the electrical system
Total Estimated Energy of the day:	1831.8 MWh
Total Estimated Curtailed Energy:	1240.8 MWh
Percentage of Curtailed Energy:	67.7%

Scada PVs Generation on 06/03/2025 (curtailment time: 08:00 - 16:00)



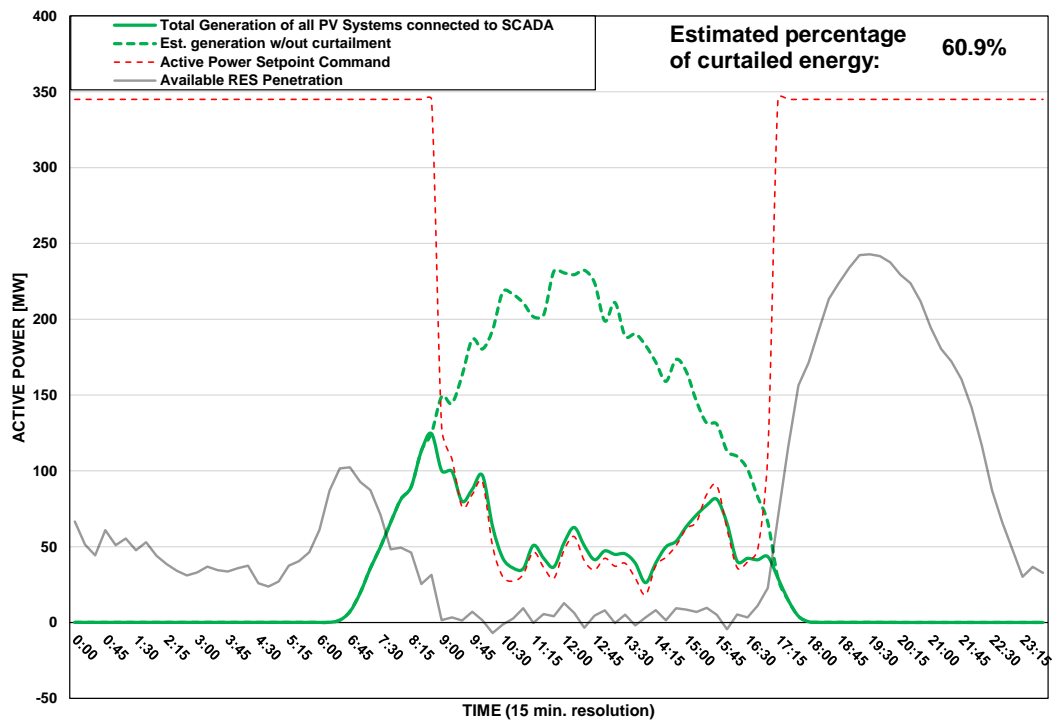
DISTRIBUTION SYSTEM OPERATOR SYSTEM OPERATION



PV Generation Curtailment Report

Date of Curtailment:	07/03/2025	Cut-off of PV Systems using RIPPLE and IoT:
Start of Curtailment	8:45	Cut-off areas using RIPPLE: LIM 2 Cut-off areas using IoT: PV-NIC4, PV-LCA/FAM3
End of Curtailment	17:00	
Instruction from TSOC	YES	Start of cut-off: 10:45 End of cut-off: 15:15
Reason of Curtailment:	RES-E Generation Restriction due to low loading of the electrical system	
Total Estimated Energy of the day:	1594.9 MWh	Total Est. Energy of the cut-off PV systems using RIPPLE: 45.1MWh
Total Estimated Curtailed Energy:	971.8 MWh	Total Est. Energy of the cut-off PV systems using IoT: 5.3MWh
Percentage of Curtailed Energy:	60.9%	

Scada PVs Generation on 07/03/2025 (curtailment time: 08:45 - 17:00)



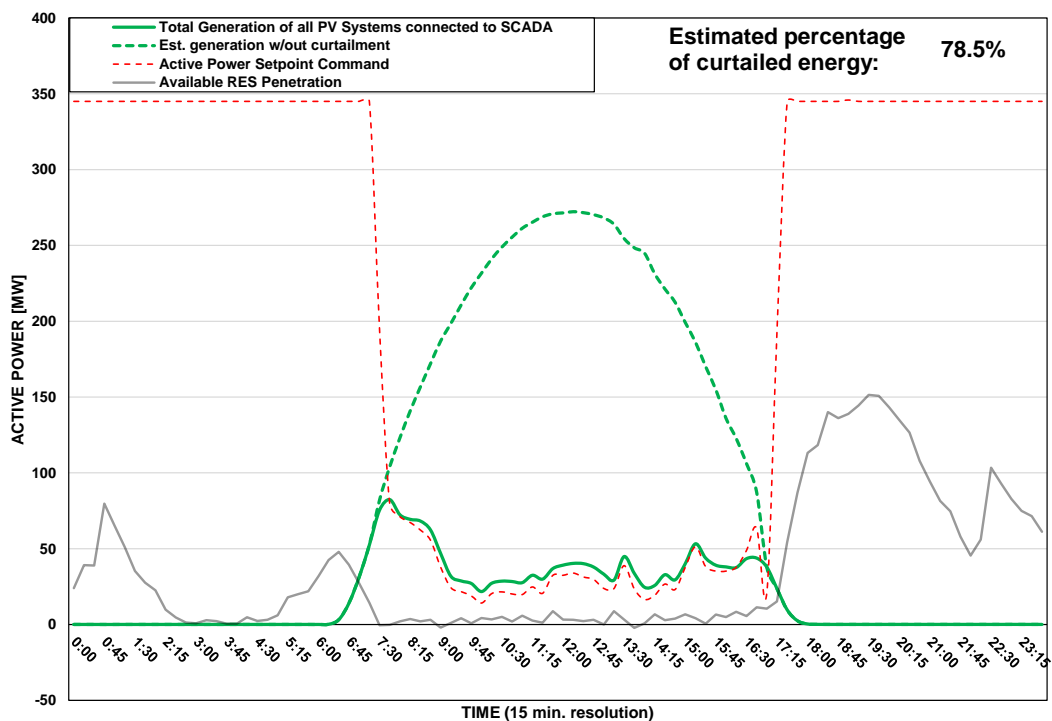
DISTRIBUTION SYSTEM OPERATOR SYSTEM OPERATION



PV Generation Curtailment Report

Date of Curtailment:	08/03/2025	Cut-off of PV Systems using RIPPLE and IoT:
Start of Curtailment	7:30	Cut-off areas using RIPPLE: NIC 1, NIC 3, LAR 2, LIM 2, PAF 2 Cut-off areas using IoT: PV-NIC1, PV-NIC4, PV-LCA/FAM1, PV-LCA/FAM3, PV-LIM3, PV-PAF3
End of Curtailment	16:45	
Instruction from TSOC	YES	Start of cut-off: 08:15 End of cut-off: 16:45
Reason of Curtailment:	RES-E Generation Restriction due to low loading of the electrical system	
Total Estimated Energy of the day:	2003 MWh	Total Est. Energy of the cut-off PV systems using RIPPLE: 498.6MWh
Total Estimated Curtailed Energy:	1571.3 MWh	Total Est. Energy of the cut-off PV systems using IoT: 279.6MWh
Percentage of Curtailed Energy:	78.5%	

Scada PVs Generation on 08/03/2025 (curtailment time: 07:30 - 16:45)



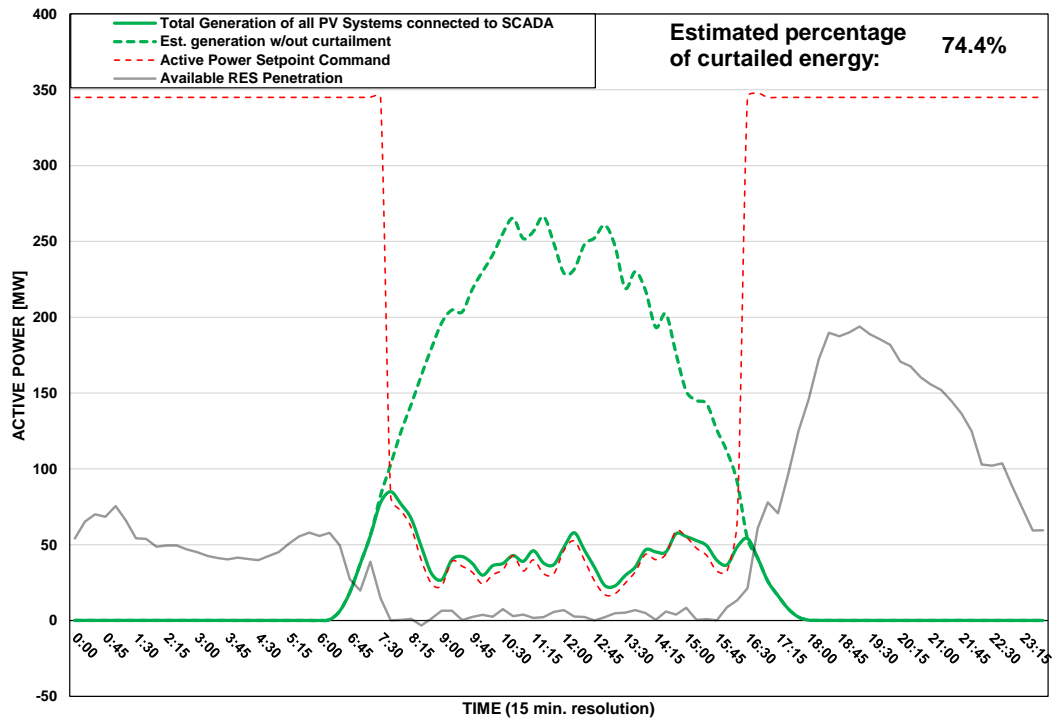
DISTRIBUTION SYSTEM OPERATOR SYSTEM OPERATION



PV Generation Curtailment Report

Date of Curtailment:	09/03/2025	Cut-off of PV Systems using RIPPLE and IoT:
Start of Curtailment	7:30	Cut-off areas using RIPPLE: NIC 3, LAR 1, LAR 2, LIM 1 Cut-off areas using IoT: PV-NIC1, PV-LCA/FAM1, PV-LIM3, PV-PAF3
End of Curtailment	16:15	
Instruction from TSOC	YES	Start of cut-off: 08:30 End of cut-off: 15:00
Reason of Curtailment:	RES-E Generation Restriction due to low loading of the electrical system	
Total Estimated Energy of the day:	1844.2 MWh	Total Est. Energy of the cut-off PV systems using RIPPLE: 397.6MWh
Total Estimated Curtailed Energy:	1372.8 MWh	Total Est. Energy of the cut-off PV systems using IoT: 193.5MWh
Percentage of Curtailed Energy:	74.4%	

Scada PVs Generation on 09/03/2025 (curtailment time: 07:30 - 16:15)



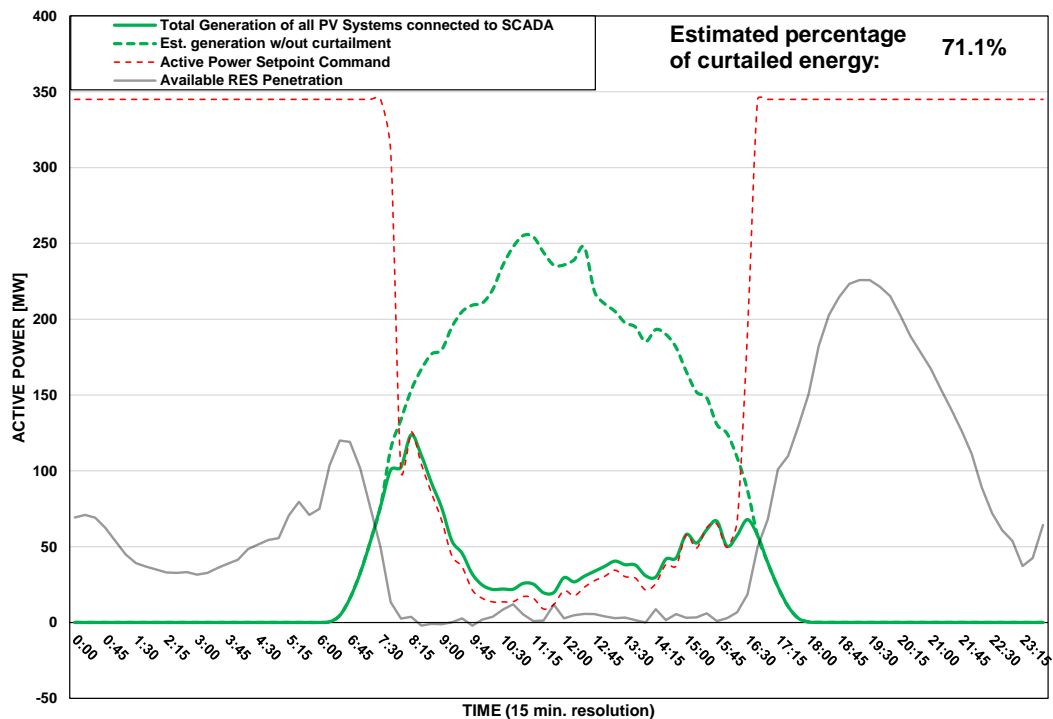
DISTRIBUTION SYSTEM OPERATOR SYSTEM OPERATION



PV Generation Curtailment Report

Date of Curtailment:	10/03/2025	Cut-off of PV Systems using RIPPLE and IoT:
Start of Curtailment	7:45	Cut-off areas using RIPPLE: NIC 1, LIM 2, PAF 2
End of Curtailment	16:30	Cut-off areas using IoT: PV-NIC1, PV-NIC4, PV-LCA/FAM1, PV-LCA/FAM3
Instruction from TSOC	YES	Start of cut-off: 09:30 End of cut-off: 15:00
Reason of Curtailment:	RES-E Generation Restriction due to low loading of the electrical system	
Total Estimated Energy of the day:	1793.4 MWh	Total Est. Energy of the cut-off PV systems using RIPPLE: 196.1MWh
Total Estimated Curtailed Energy:	1275.3 MWh	Total Est. Energy of the cut-off PV systems using IoT: 154.5MWh
Percentage of Curtailed Energy:	71.1%	

Scada PVs Generation on 10/03/2025 (curtailment time: 07:45 - 16:30)



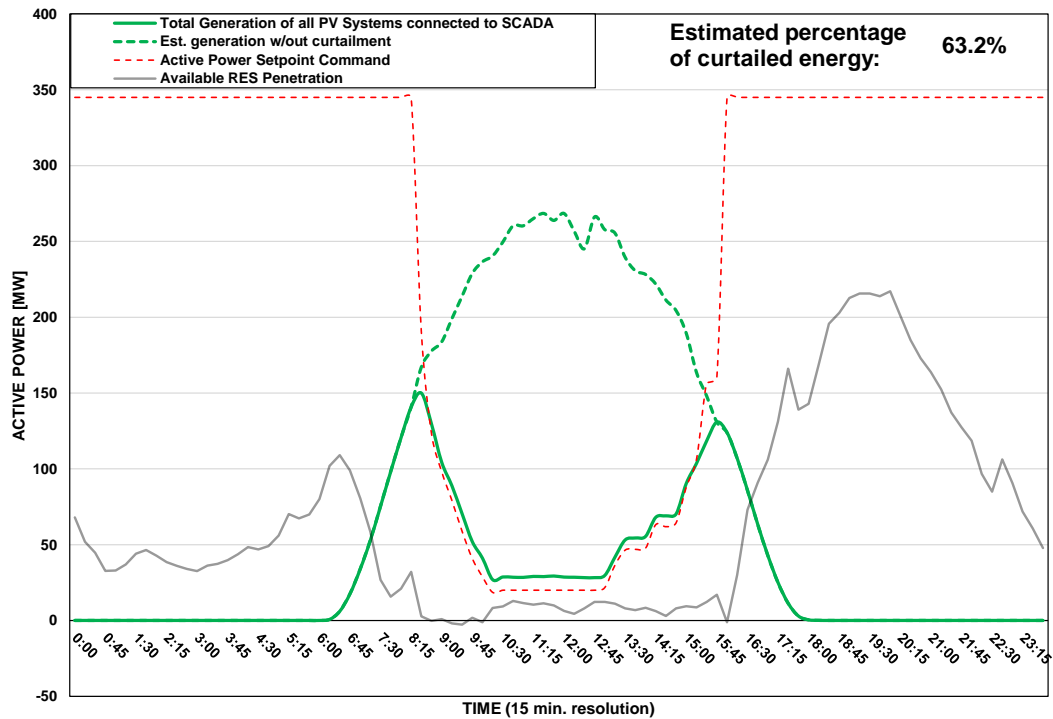
DISTRIBUTION SYSTEM OPERATOR SYSTEM OPERATION



PV Generation Curtailment Report

Date of Curtailment:	11/03/2025	Cut-off of PV Systems using RIPPLE:
Start of Curtailment	8:30	Cut-off areas using RIPPLE: LAR 1, LAR 2
End of Curtailment	15:30	
Instruction from TSOC	YES	Start of cut-off: 10:30 End of cut-off: 14:30
Reason of Curtailment:	RES-E Generation Restriction due to low loading of the electrical system	
Total Estimated Energy of the day:	1936.2 MWh	Total Est. Energy of the cut-off PV systems using RIPPLE: 141.6MWh
Total Estimated Curtailed Energy:	1224.3 MWh	
Percentage of Curtailed Energy:	63.2%	

Scada PVs Generation on 11/03/2025 (curtailment time: 08:30 - 15:30)



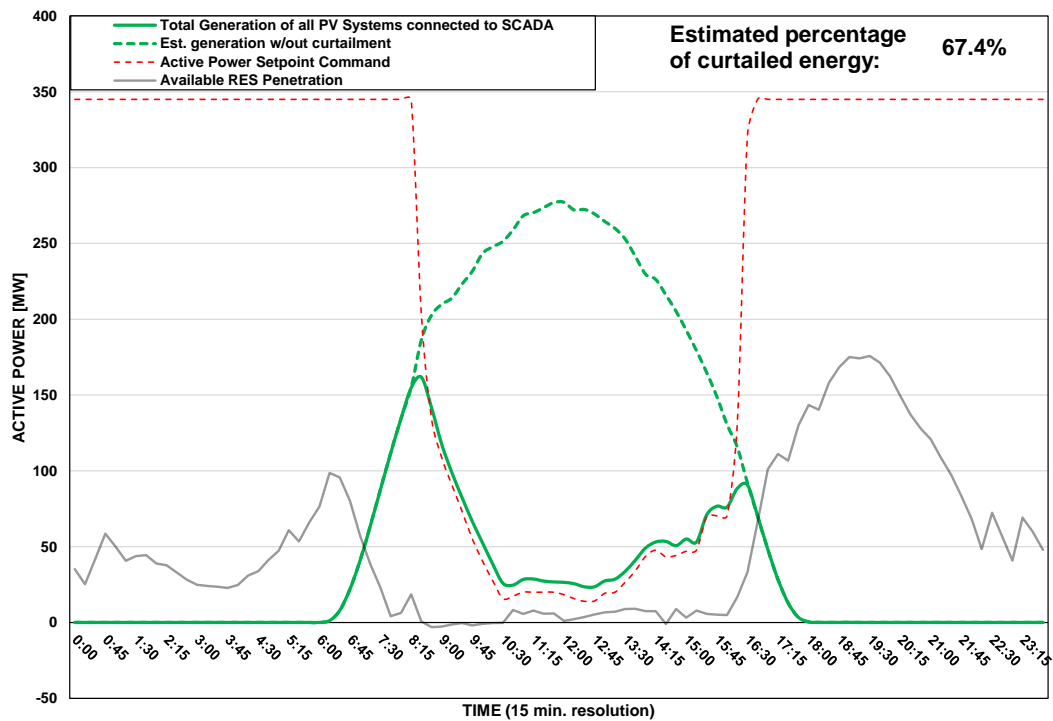
DISTRIBUTION SYSTEM OPERATOR SYSTEM OPERATION



PV Generation Curtailment Report

Date of Curtailment:	12/03/2025	Cut-off of PV Systems using RIPPLE:
Start of Curtailment	8:30	Cut-off areas using RIPPLE: NIC 1, LIM 1, PAF 2
End of Curtailment	16:30	
Instruction from TSOC	YES	Start of cut-off: 10:30 End of cut-off: 14:15
Reason of Curtailment:	RES-E Generation Restriction due to low loading of the electrical system	
Total Estimated Energy of the day:	2040.3 MWh	Total Est. Energy of the cut-off PV systems using RIPPLE: 153.8MWh
Total Estimated Curtailed Energy:	1374.9 MWh	
Percentage of Curtailed Energy:	67.4%	

Scada PVs Generation on 12/03/2025 (curtailment time: 08:30 - 16:30)



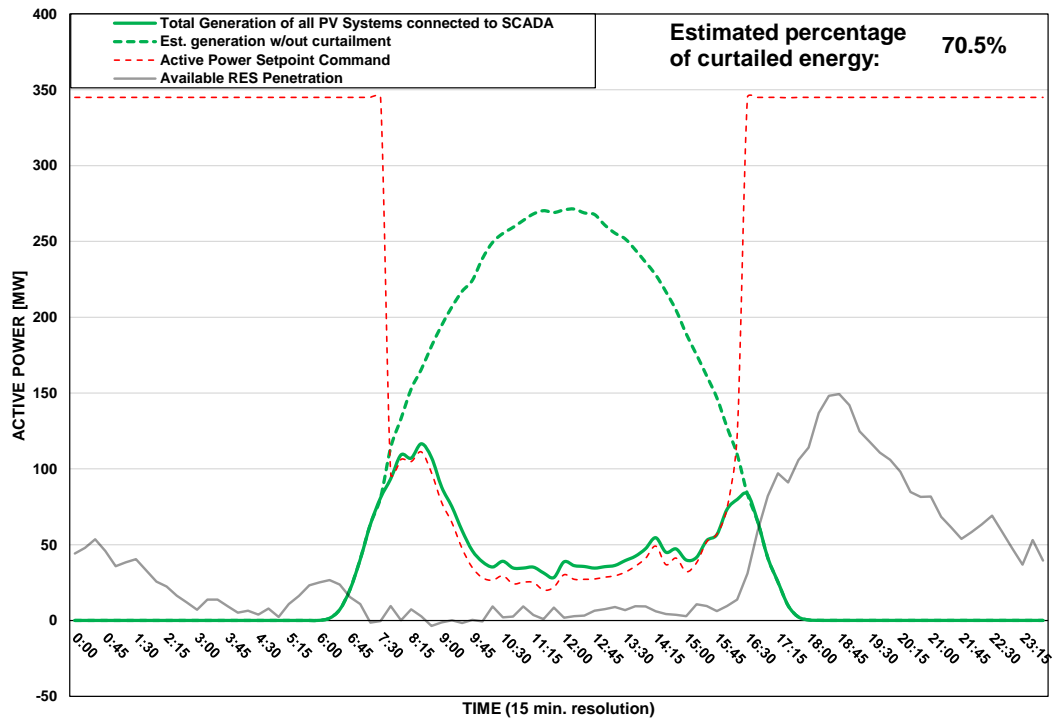
DISTRIBUTION SYSTEM OPERATOR SYSTEM OPERATION



PV Generation Curtailment Report

Date of Curtailment:	13/03/2025	Cut-off of PV Systems using RIPPLE and IoT:
Start of Curtailment	7:45	Cut-off areas using RIPPLE: NIC 3, PAF 1 Cut-off areas using IoT: PV-NIC4, PV-LCA/FAM3
End of Curtailment	16:15	
Instruction from TSOC	YES	Start of cut-off: 10:00 End of cut-off: 15:30
Reason of Curtailment:	RES-E Generation Restriction due to low loading of the electrical system	
Total Estimated Energy of the day:	1998.7 MWh	Total Est. Energy of the cut-off PV systems using RIPPLE: 202.3MWh
Total Estimated Curtailed Energy:	1408.1 MWh	Total Est. Energy of the cut-off PV systems using IoT: 30.3MWh
Percentage of Curtailed Energy:	70.5%	

Scada PVs Generation on 13/03/2025 (curtailment time: 07:45 - 16:15)



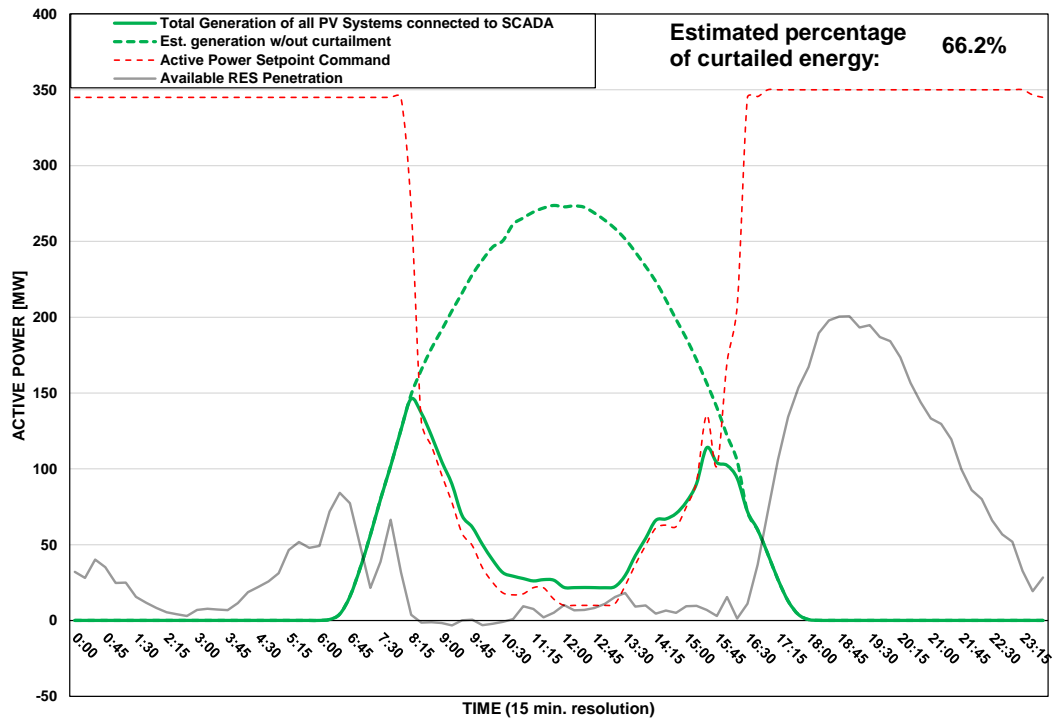
DISTRIBUTION SYSTEM OPERATOR SYSTEM OPERATION



PV Generation Curtailment Report

Date of Curtailment:	14/03/2025	Cut-off of PV Systems using RIPPLE:
Start of Curtailment	8:15	Cut-off areas using RIPPLE: NIC 2
End of Curtailment	16:15	
Instruction from TSOC	YES	Start of cut-off: 10:30 End of cut-off: 14:30
Reason of Curtailment:	RES-E Generation Restriction due to low loading of the electrical system	
Total Estimated Energy of the day:	1977 MWh	Total Est. Energy of the cut-off PV systems using RIPPLE: 52.1MWh
Total Estimated Curtailed Energy:	1307.9 MWh	
Percentage of Curtailed Energy:	66.2%	

Scada PVs Generation on 14/03/2025 (curtailment time: 08:15 - 16:15)



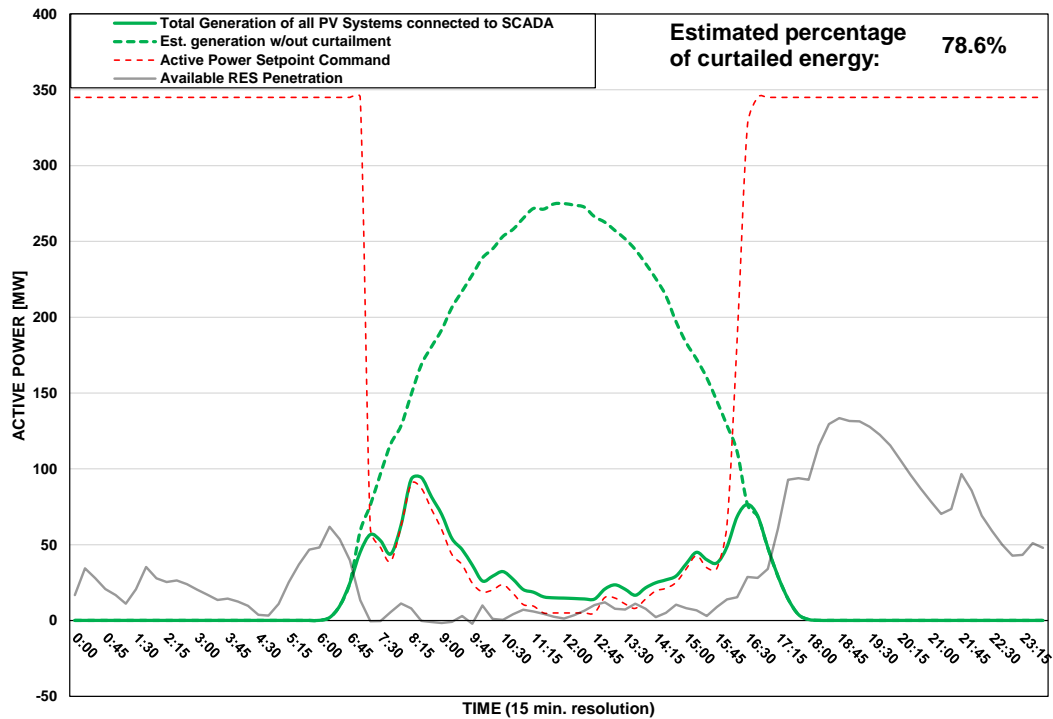
DISTRIBUTION SYSTEM OPERATOR SYSTEM OPERATION



PV Generation Curtailment Report

Date of Curtailment:	15/03/2025	Cut-off of PV Systems using RIPPLE and IoT:
Start of Curtailment	7:00	Cut-off areas using RIPPLE: LIM 1 Cut-off areas using IoT: PV-LIM3, PV-PAF3
End of Curtailment	16:15	
Instruction from TSOC	YES	Start of cut-off: 09:45 End of cut-off: 17:30
Reason of Curtailment:	RES-E Generation Restriction due to low loading of the electrical system	
Total Estimated Energy of the day:	2013.6 MWh	Total Est. Energy of the cut-off PV systems using RIPPLE: 88MWh
Total Estimated Curtailed Energy:	1582.7 MWh	Total Est. Energy of the cut-off PV systems using IoT: 111.8MWh
Percentage of Curtailed Energy:	78.6%	

Scada PVs Generation on 15/03/2025 (curtailment time: 07:00 - 16:15)



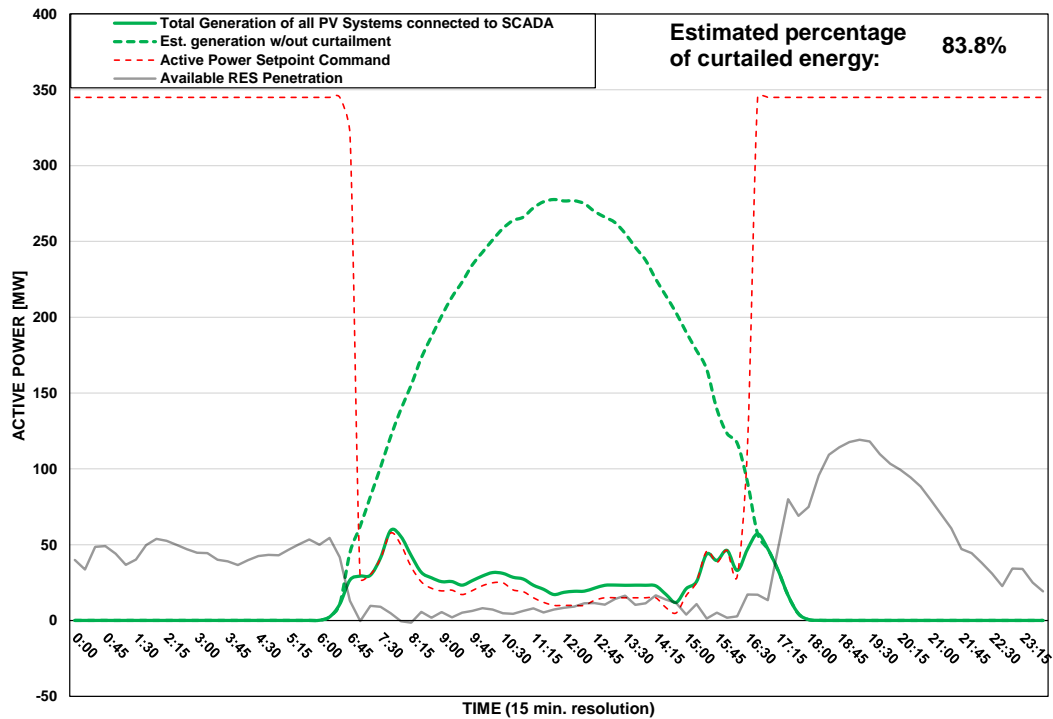
DISTRIBUTION SYSTEM OPERATOR SYSTEM OPERATION



PV Generation Curtailment Report

Date of Curtailment:	16/03/2025	Cut-off of PV Systems using RIPPLE and IoT:
Start of Curtailment	6:45	Cut-off areas using RIPPLE: NIC 1, NIC 2, NIC 3, LAR 1, LAR 2, LIM 2, PAF 2 Cut-off areas using IoT: PV-LCA/FAM1
End of Curtailment	16:30	
Instruction from TSOC	YES	Start of cut-off: 08:15 End of cut-off: 15:45
Reason of Curtailment:	RES-E Generation Restriction due to low loading of the electrical system	
Total Estimated Energy of the day:	2058.7 MWh	Total Est. Energy of the cut-off PV systems using RIPPLE: 727.4MWh
Total Estimated Curtailed Energy:	1725.2 MWh	Total Est. Energy of the cut-off PV systems using IoT: 66.6MWh
Percentage of Curtailed Energy:	83.8%	

Scada PVs Generation on 16/03/2025 (curtailment time: 06:45 - 16:30)



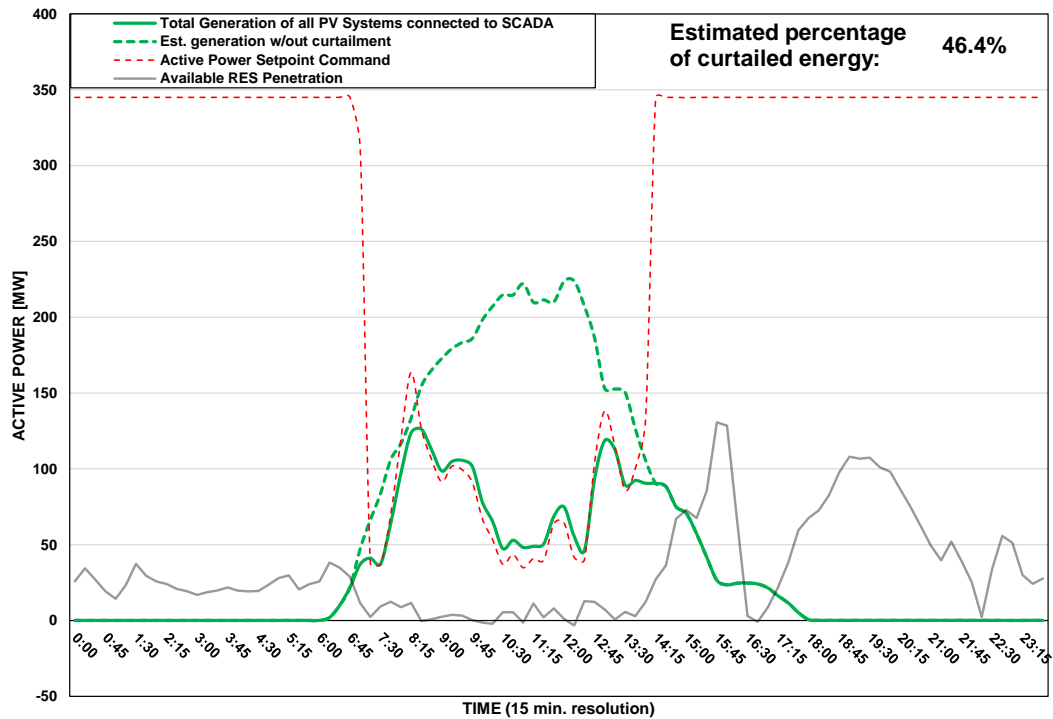
DISTRIBUTION SYSTEM OPERATOR SYSTEM OPERATION



PV Generation Curtailment Report

Date of Curtailment:	17/03/2025
Start of Curtailment	7:00
End of Curtailment	14:00
Instruction from TSOC	YES
Reason of Curtailment:	RES-E Generation Restriction due to low loading of the electrical system
Total Estimated Energy of the day:	1363.2 MWh
Total Estimated Curtailed Energy:	632.2 MWh
Percentage of Curtailed Energy:	46.4%

Scada PVs Generation on 17/03/2025 (curtailment time: 07:00 - 14:00)



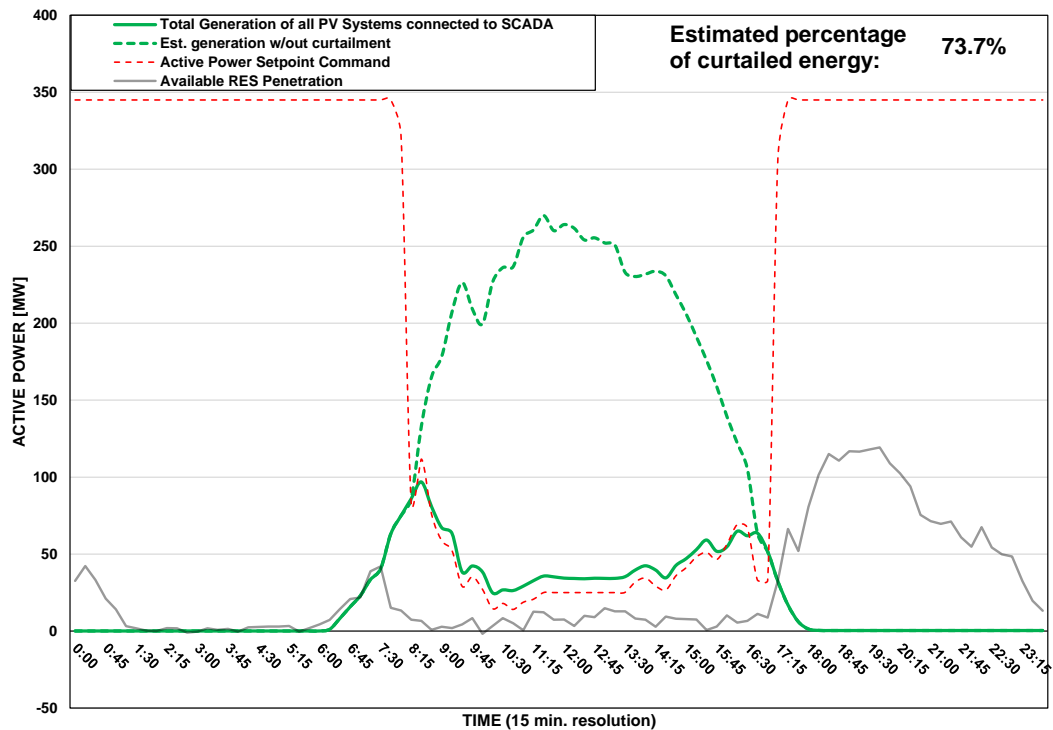
DISTRIBUTION SYSTEM OPERATOR SYSTEM OPERATION



PV Generation Curtailment Report

Date of Curtailment:	18/03/2025	Cut-off of PV Systems using RIPPLE and IoT:
Start of Curtailment	8:30	Cut-off areas using RIPPLE: NIC 2, PAF 1 Cut-off areas using IoT: PV-NIC1, PV-NIC4, PV-LCA/FAM1, PV-LCA/FAM3
End of Curtailment	16:30	
Instruction from TSOC	YES	Start of cut-off: 10:00 End of cut-off: 15:00
Reason of Curtailment:	RES-E Generation Restriction due to low loading of the electrical system	
Total Estimated Energy of the day:	1901.9 MWh	Total Est. Energy of the cut-off PV systems using RIPPLE: 63.6MWh
Total Estimated Curtailed Energy:	1402.5 MWh	Total Est. Energy of the cut-off PV systems using IoT: 148.3MWh
Percentage of Curtailed Energy:	73.7%	

Scada PVs Generation on 18/03/2025 (curtailment time: 08:30 - 16:30)



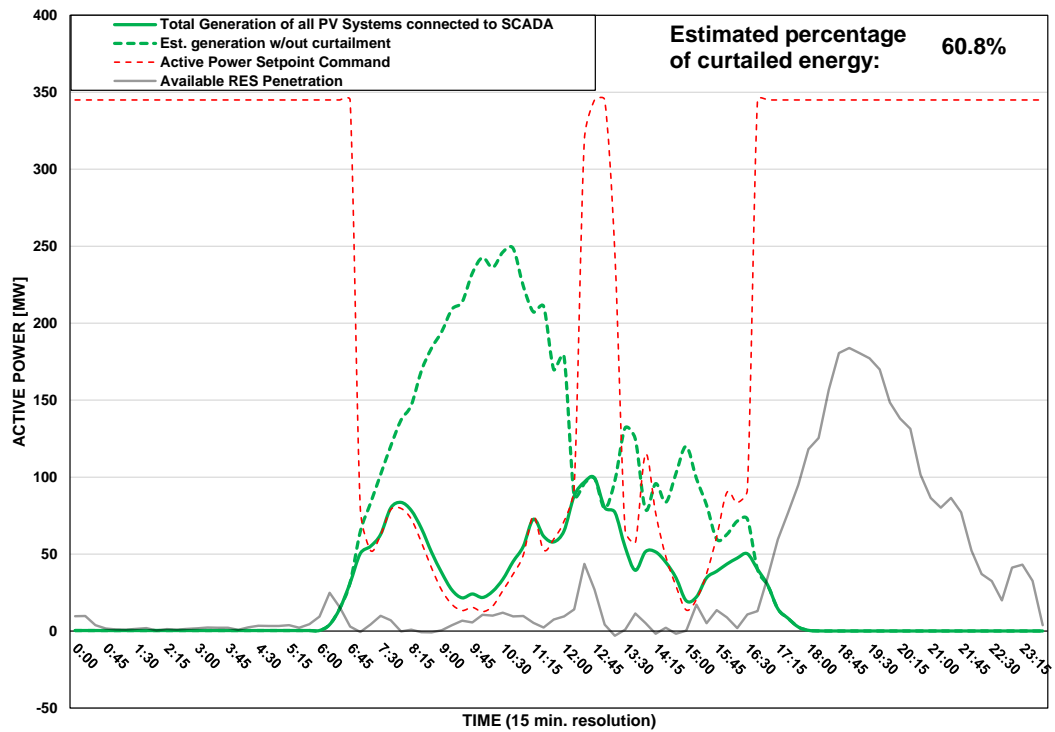
DISTRIBUTION SYSTEM OPERATOR SYSTEM OPERATION



PV Generation Curtailment Report

Date of Curtailment:	19/03/2025	Cut-off of PV Systems using RIPPLE and IoT:
Start of Curtailment	7:00	Cut-off areas using RIPPLE: NIC 1, NIC 2, LAR 1, LAR 2, LIM 1, PAF 1 Cut-off areas using IoT: PV-LCA/FAM3, PV-LIM3
End of Curtailment	16:30	
Instruction from TSOC	YES	Start of cut-off: 09:15 End of cut-off: 12:00
Reason of Curtailment:	RES-E Generation Restriction due to low loading of the electrical system	
Total Estimated Energy of the day:	1405.6 MWh	Total Est. Energy of the cut-off PV systems using RIPPLE: 164.5MWh
Total Estimated Curtailed Energy:	854.3 MWh	Total Est. Energy of the cut-off PV systems using IoT: 20.2MWh
Percentage of Curtailed Energy:	60.8%	

Scada PVs Generation on 19/03/2025 (curtailment time: 07:00 - 16:30)



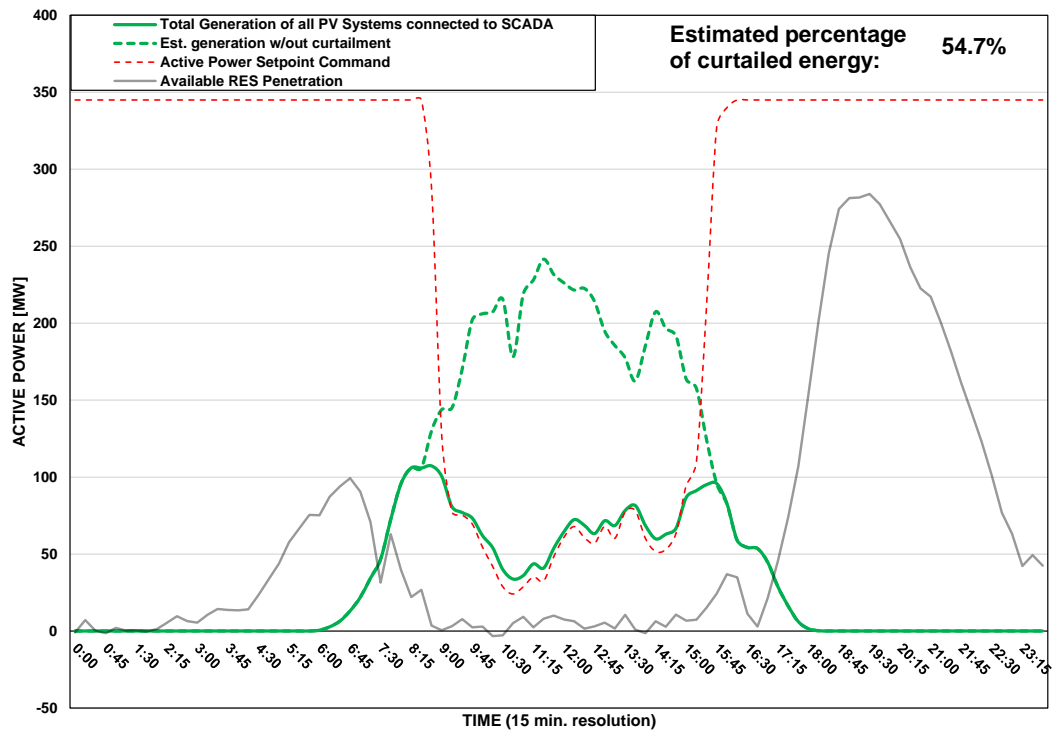
DISTRIBUTION SYSTEM OPERATOR SYSTEM OPERATION



PV Generation Curtailment Report

Date of Curtailment:	20/03/2025
Start of Curtailment	8:45
End of Curtailment	15:30
Instruction from TSOC	YES
Reason of Curtailment:	RES-E Generation Restriction due to low loading of the electrical system
Total Estimated Energy of the day:	1575.4 MWh
Total Estimated Curtailed Energy:	861.6 MWh
Percentage of Curtailed Energy:	54.7%

Scada PVs Generation on 20/03/2025 (curtailment time: 08:45 - 15:30)



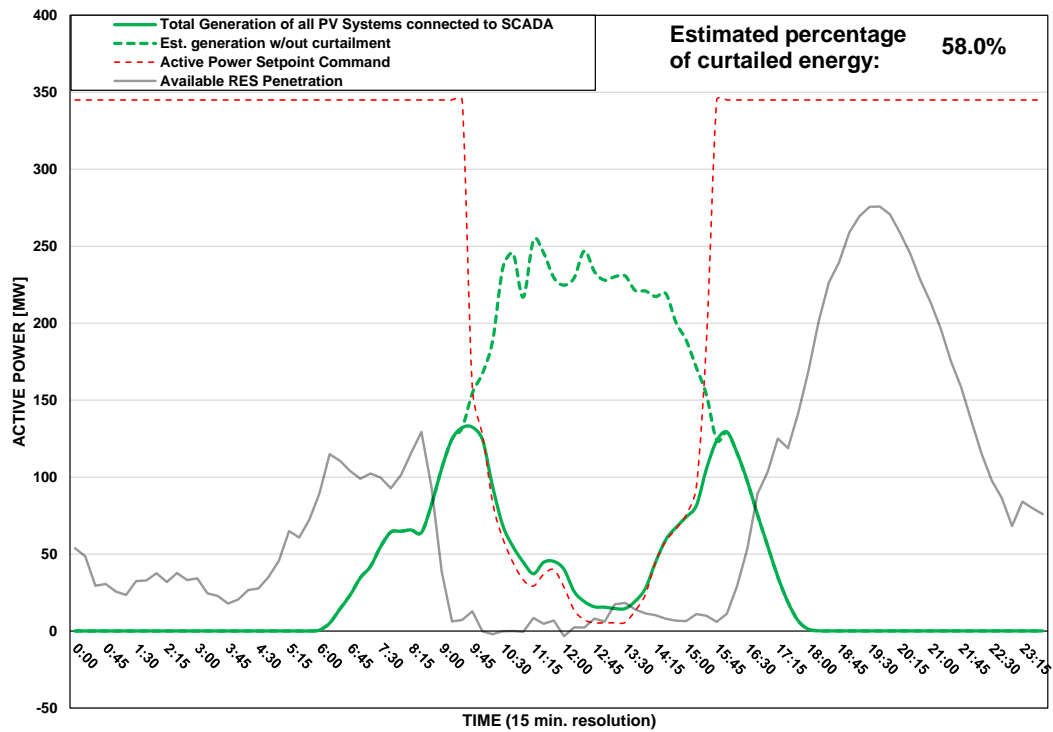
DISTRIBUTION SYSTEM OPERATOR SYSTEM OPERATION



PV Generation Curtailment Report

Date of Curtailment:	21/03/2025
Start of Curtailment	9:45
End of Curtailment	15:30
Instruction from TSOC	YES
Reason of Curtailment:	RES-E Generation Restriction due to low loading of the electrical system
Total Estimated Energy of the day:	1673.4 MWh
Total Estimated Curtailed Energy:	970.6 MWh
Percentage of Curtailed Energy:	58.0%

Scada PVs Generation on 21/03/2025 (curtailment time: 09:45 - 15:30)



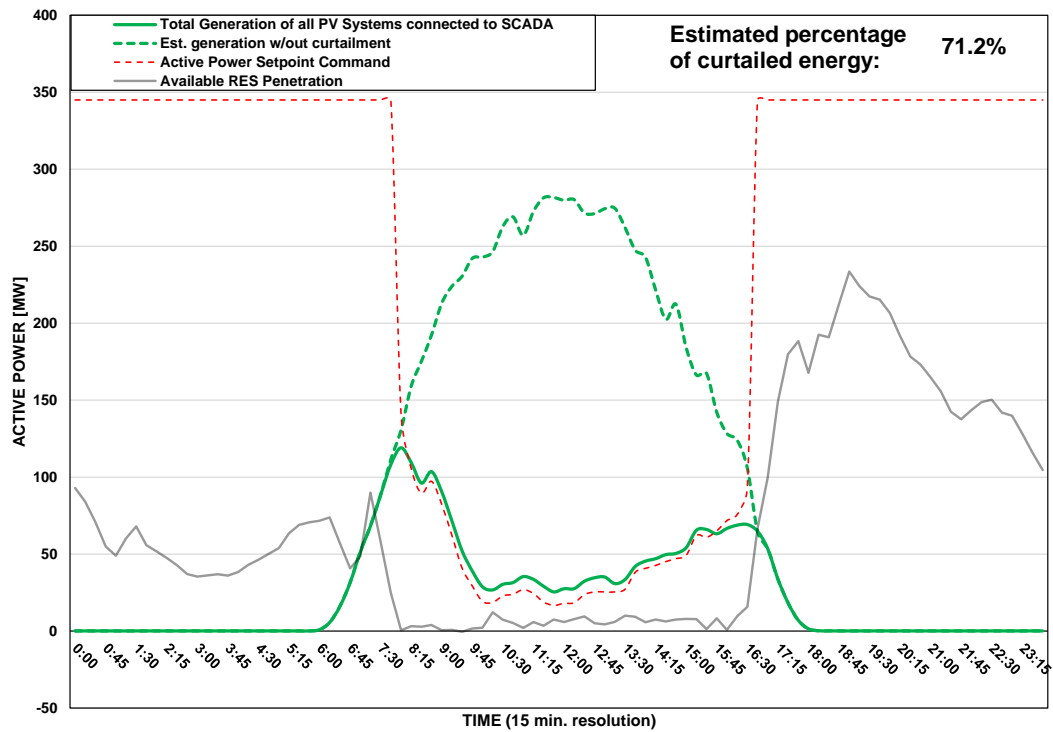
DISTRIBUTION SYSTEM OPERATOR SYSTEM OPERATION



PV Generation Curtailment Report

Date of Curtailment:	22/03/2025	Cut-off of PV Systems using RIPPLE and IoT:
Start of Curtailment	7:45	Cut-off areas using RIPPLE: NIC 2, LIM 1, PAF 1 Cut-off areas using IoT: PV-NIC1, PV-NIC4, PV-LCA/FAM1
End of Curtailment	16:30	
Instruction from TSOC	YES	Start of cut-off: 09:45 End of cut-off: 15:15
Reason of Curtailment:	RES-E Generation Restriction due to low loading of the electrical system	
Total Estimated Energy of the day:	2074.2 MWh	Total Est. Energy of the cut-off PV systems using RIPPLE: 191.7MWh
Total Estimated Curtailed Energy:	1477.8 MWh	Total Est. Energy of the cut-off PV systems using IoT: 151.1MWh
Percentage of Curtailed Energy:	71.2%	

Scada PVs Generation on 22/03/2025 (curtailment time: 07:45 - 16:30)



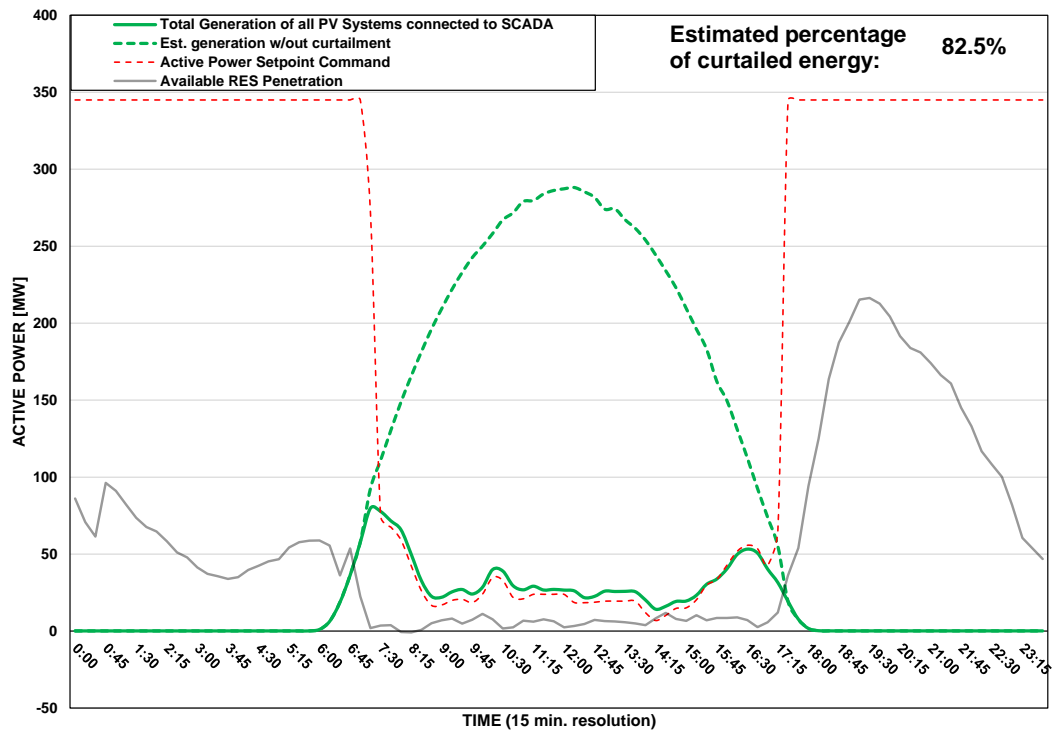
DISTRIBUTION SYSTEM OPERATOR SYSTEM OPERATION



PV Generation Curtailment Report

Date of Curtailment:	23/03/2025	<u>Cut-off of PV Systems using RIPPLE and IoT:</u>
Start of Curtailment	7:15	Cut-off areas using RIPPLE: NIC 1, NIC 2, NIC 3, LAR 1, LAR 2, LIM 1, LIM 2, PAF 1, PAF 2
End of Curtailment	17:15	Cut-off areas using IoT: PV-NIC1, PV-NIC4, PV-LCA/FAM1, PV-LCA/FAM3, PV-LIM3, PV-PAF3
Instruction from TSOC	YES	Start of cut-off: 08:30 End of cut-off: 17:15
Reason of Curtailment:	RES-E Generation Restriction due to low loading of the electrical system	
Total Estimated Energy of the day:	2201 MWh	Total Est. Energy of the cut-off PV systems using RIPPLE: 744.5MWh
Total Estimated Curtailed Energy:	1815.7 MWh	Total Est. Energy of the cut-off PV systems using IoT: 337.1MWh
Percentage of Curtailed Energy:	82.5%	

Scada PVs Generation on 23/03/2025 (curtailment time: 07:15 - 17:15)



DISTRIBUTION SYSTEM OPERATOR SYSTEM OPERATION

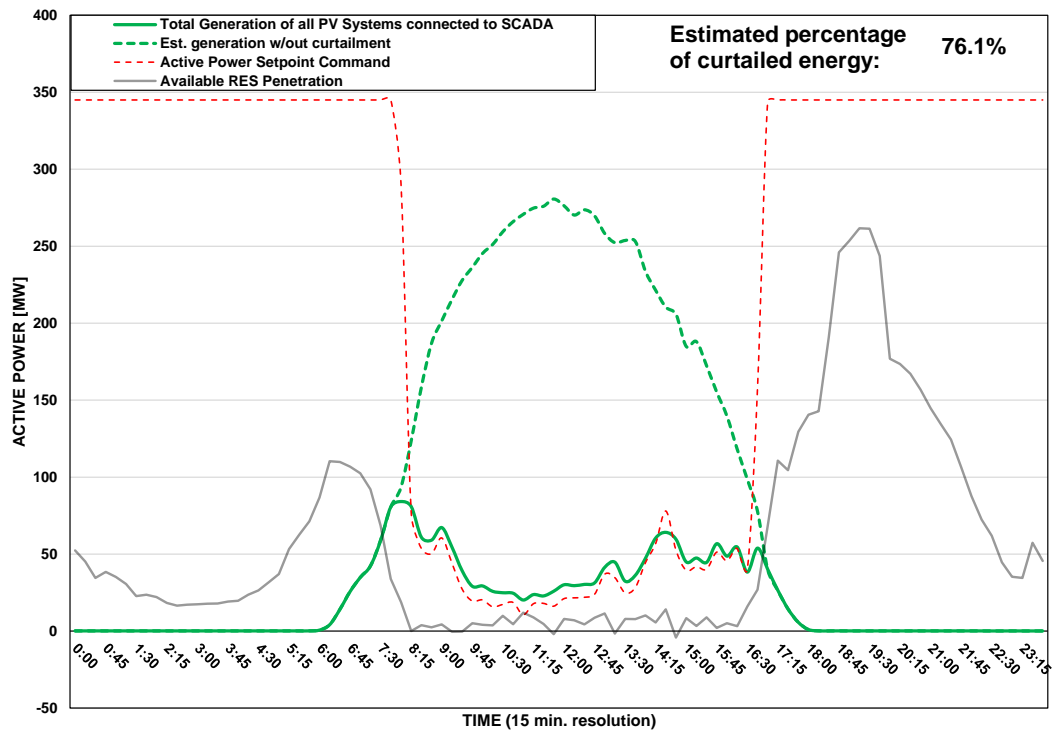


Αρχή Ηλεκτρισμού Κύπρου
Διανομή

PV Generation Curtailment Report

Date of Curtailment:	24/03/2025	Cut-off of PV Systems using RIPPLE and IoT:
Start of Curtailment	8:00	Cut-off areas using RIPPLE: NIC 2, PAF 1, PAF 2 Cut-off areas using IoT: PV-NIC1, PV-NIC4, PV-LCA/FAM3, PV-PAF3
End of Curtailment	16:45	
Instruction from TSOC	YES	Start of cut-off: 09:30 End of cut-off: 16:15
Reason of Curtailment:	RES-E Generation Restriction due to low loading of the electrical system	
Total Estimated Energy of the day:	2008.6 MWh	Total Est. Energy of the cut-off PV systems using RIPPLE: 201.2MWh
Total Estimated Curtailed Energy:	1528 MWh	Total Est. Energy of the cut-off PV systems using IoT: 125.9MWh
Percentage of Curtailed Energy:	76.1%	

Scada PVs Generation on 24/03/2025 (curtailment time: 08:00 - 16:45)



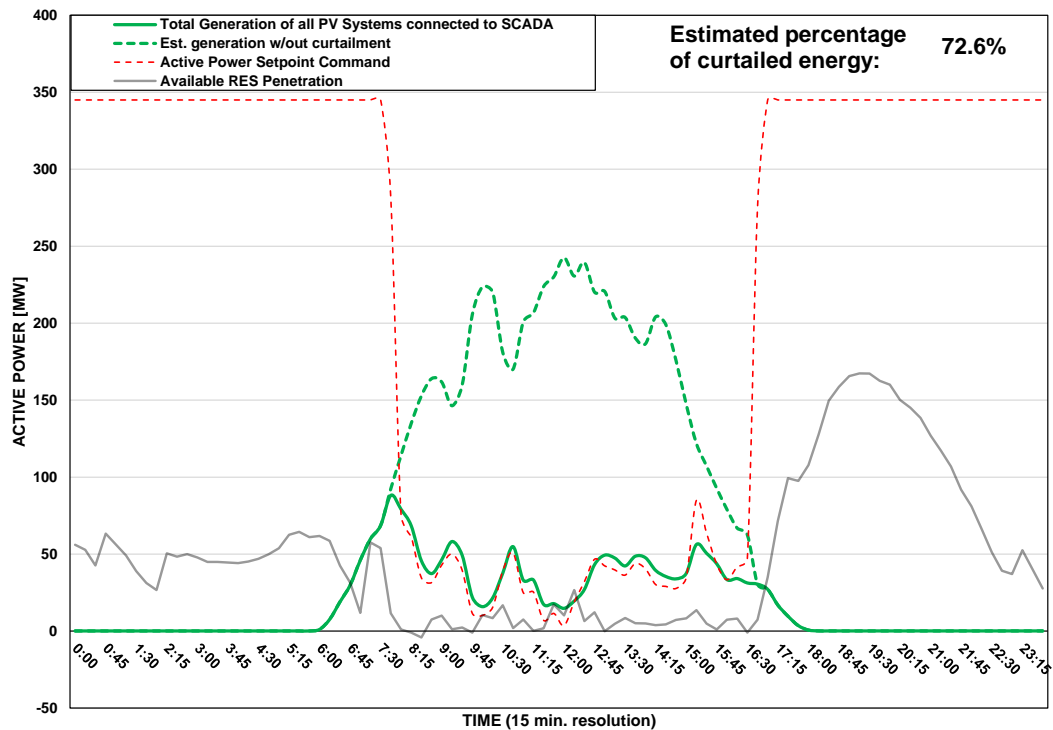
DISTRIBUTION SYSTEM OPERATOR SYSTEM OPERATION



PV Generation Curtailment Report

Date of Curtailment:	25/03/2025	Cut-off of PV Systems using RIPPLE and IoT:
Start of Curtailment	7:45	Cut-off areas using RIPPLE: NIC 1, NIC 2, LAR 2, LIM 1, LIM 2, PAF 1 Cut-off areas using IoT: PV-LIM3
End of Curtailment	16:30	
Instruction from TSOC	YES	Start of cut-off: 09:30 End of cut-off: 15:30
Reason of Curtailment:	RES-E Generation Restriction due to low loading of the electrical system	
Total Estimated Energy of the day:	1626.4 MWh	Total Est. Energy of the cut-off PV systems using RIPPLE: 281.7MWh
Total Estimated Curtailed Energy:	1180.1 MWh	Total Est. Energy of the cut-off PV systems using IoT: 46.7MWh
Percentage of Curtailed Energy:	72.6%	

Scada PVs Generation on 25/03/2025 (curtailment time: 07:45 - 16:30)



DISTRIBUTION SYSTEM OPERATOR SYSTEM OPERATION

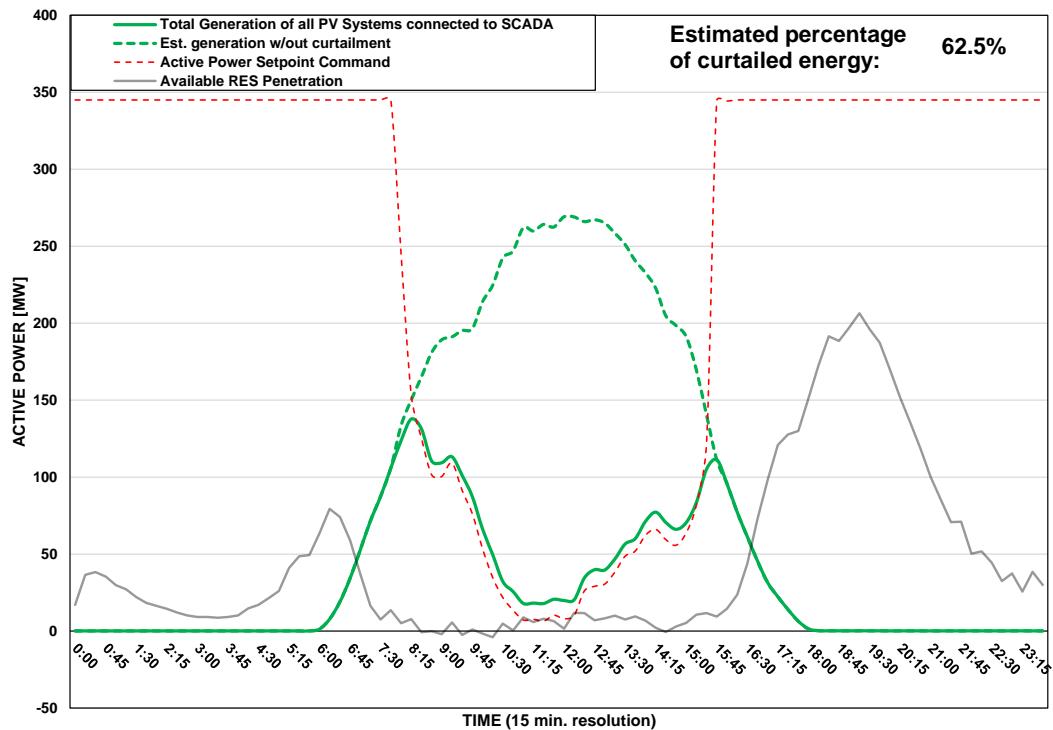


Αρχή Ηλεκτρισμού Κύπρου
Διανομή

PV Generation Curtailment Report

Date of Curtailment:	26/03/2025	Cut-off of PV Systems using RIPPLE and IoT:
Start of Curtailment	8:00	Cut-off areas using RIPPLE: NIC 3, LAR 1 Cut-off areas using IoT: PV-PAF3
End of Curtailment	15:30	
Instruction from TSOC	YES	Start of cut-off: 10:45 End of cut-off: 14:15
Reason of Curtailment:	RES-E Generation Restriction due to low loading of the electrical system	
Total Estimated Energy of the day:	1919 MWh	Total Est. Energy of the cut-off PV systems using RIPPLE: 115.3MWh
Total Estimated Curtailed Energy:	1199.7 MWh	Total Est. Energy of the cut-off PV systems using IoT: 21.4MWh
Percentage of Curtailed Energy:	62.5%	

Scada PVs Generation on 26/03/2025 (curtailment time: 08:00 - 15:30)



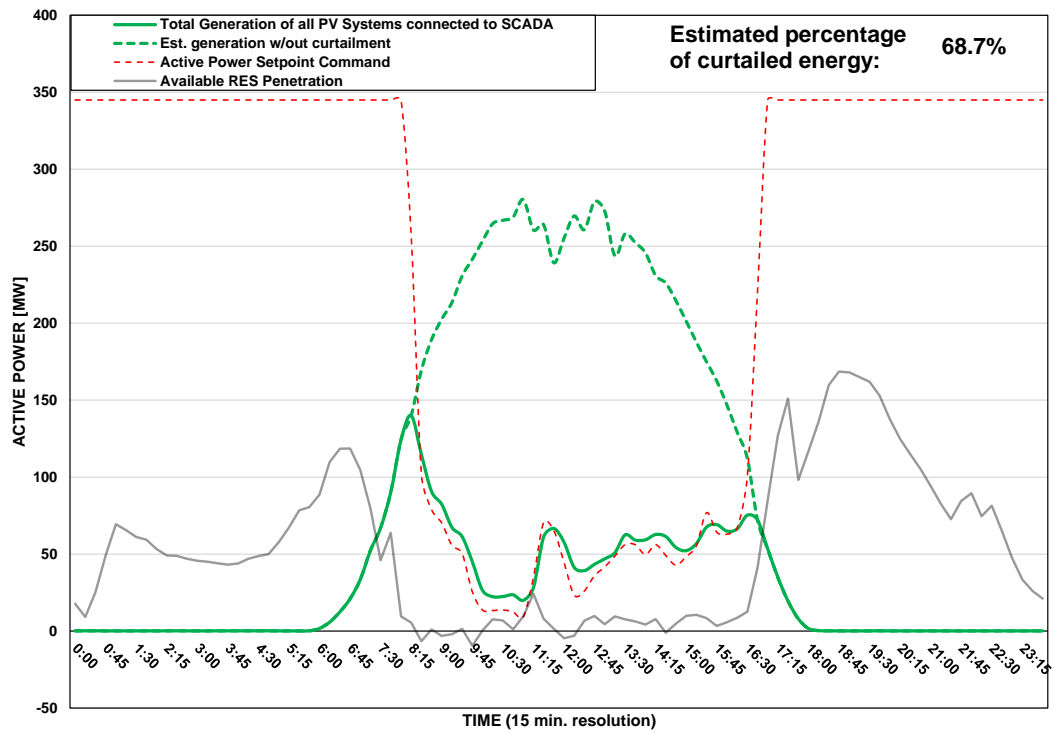
DISTRIBUTION SYSTEM OPERATOR SYSTEM OPERATION



PV Generation Curtailment Report

Date of Curtailment:	27/03/2025	Cut-off of PV Systems using RIPPLE and IoT:
Start of Curtailment	8:15	Cut-off areas using RIPPLE: NIC 2, LAR 1 Cut-off areas using IoT: PV-NIC4, PV-LCA/FAM1, PV-LCA/FAM3, PV-LIM3
End of Curtailment	16:30	
Instruction from TSOC	YES	Start of cut-off: 10:00 End of cut-off: 14:15
Reason of Curtailment:	RES-E Generation Restriction due to low loading of the electrical system	
Total Estimated Energy of the day:	2053.1 MWh	Total Est. Energy of the cut-off PV systems using RIPPLE: 71.7MWh
Total Estimated Curtailed Energy:	1411.2 MWh	Total Est. Energy of the cut-off PV systems using IoT: 98.1MWh
Percentage of Curtailed Energy:	68.7%	

Scada PVs Generation on 27/03/2025 (curtailment time: 08:15 - 16:30)



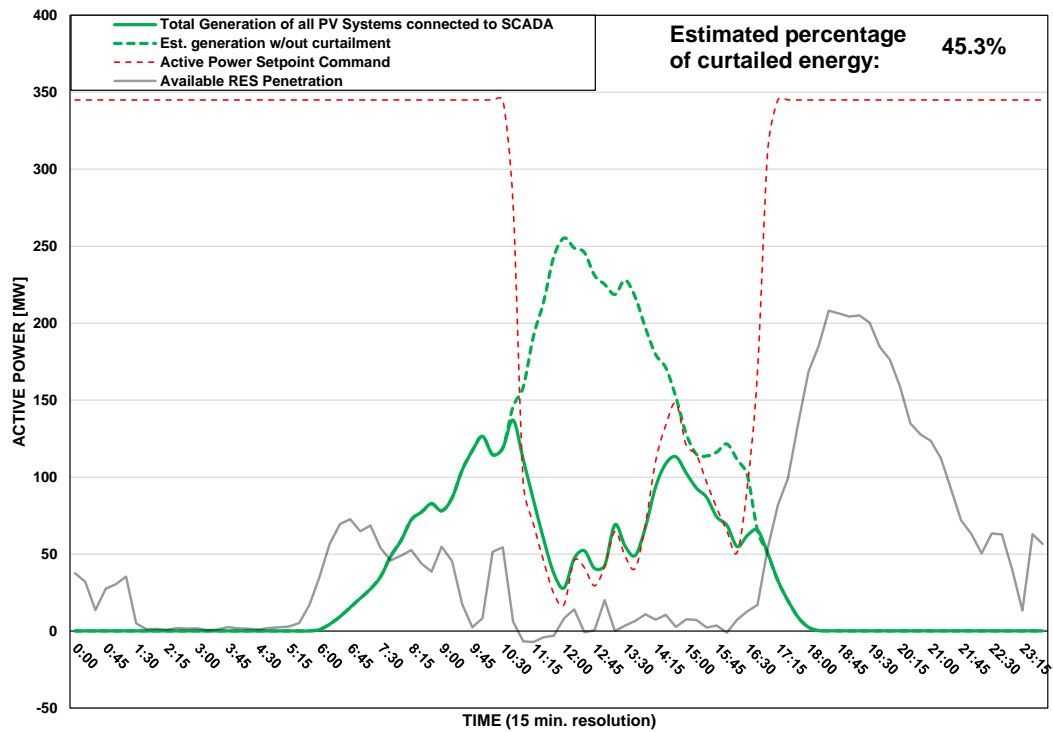
DISTRIBUTION SYSTEM OPERATOR SYSTEM OPERATION



PV Generation Curtailment Report

Date of Curtailment:	28/03/2025
Start of Curtailment	10:45
End of Curtailment	16:30
Instruction from TSOC	YES
Reason of Curtailment:	RES-E Generation Restriction due to low loading of the electrical system
Total Estimated Energy of the day:	1428.7 MWh
Total Estimated Curtailed Energy:	647.2 MWh
Percentage of Curtailed Energy:	45.3%

Scada PVs Generation on 28/03/2025 (curtailment time: 10:45 - 16:30)



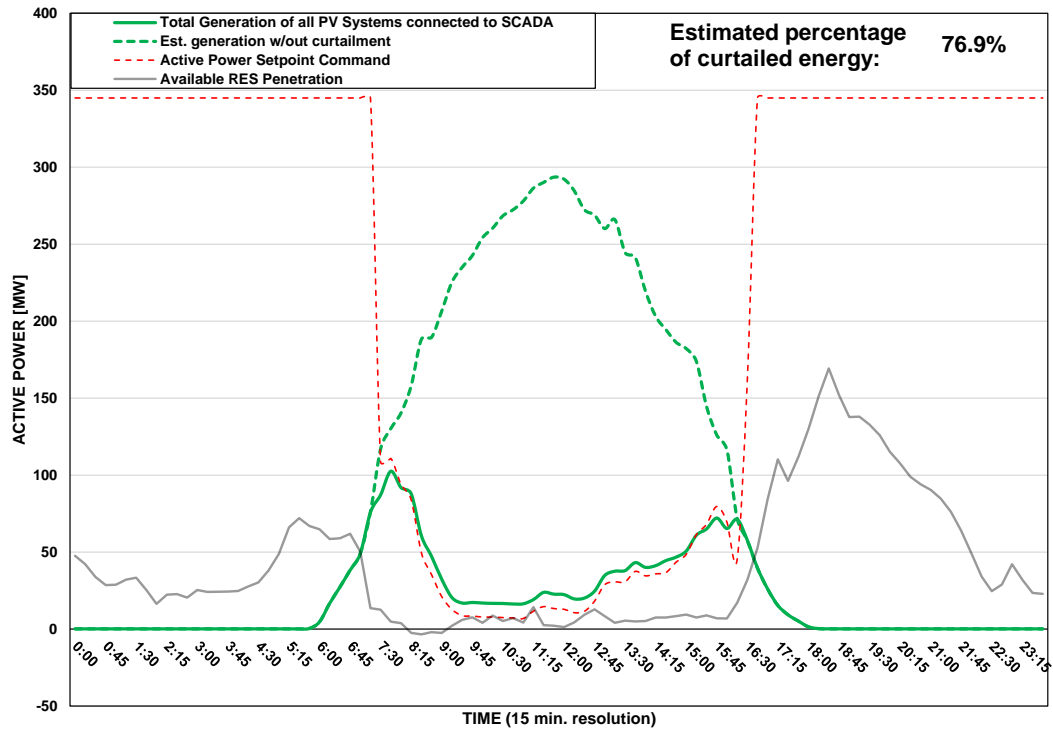
DISTRIBUTION SYSTEM OPERATOR SYSTEM OPERATION



PV Generation Curtailment Report

Date of Curtailment:	29/03/2025	Cut-off of PV Systems using RIPPLE and IoT:
Start of Curtailment	7:30	Cut-off areas using RIPPLE: NIC 1, LAR 1, LAR 2, LIM 1, PAF 1, PAF 2 Cut-off areas using IoT: PV-NIC1
End of Curtailment	16:00	
Instruction from TSOC	YES	Start of cut-off: 09:15 End of cut-off: 15:15
Reason of Curtailment:	RES-E Generation Restriction due to low loading of the electrical system	
Total Estimated Energy of the day:	2039.8 MWh	Total Est. Energy of the cut-off PV systems using RIPPLE: 451.3MWh
Total Estimated Curtailed Energy:	1568.5 MWh	Total Est. Energy of the cut-off PV systems using IoT: 61MWh
Percentage of Curtailed Energy:	76.9%	

Scada PVs Generation on 29/03/2025 (curtailment time: 07:30 - 16:00)



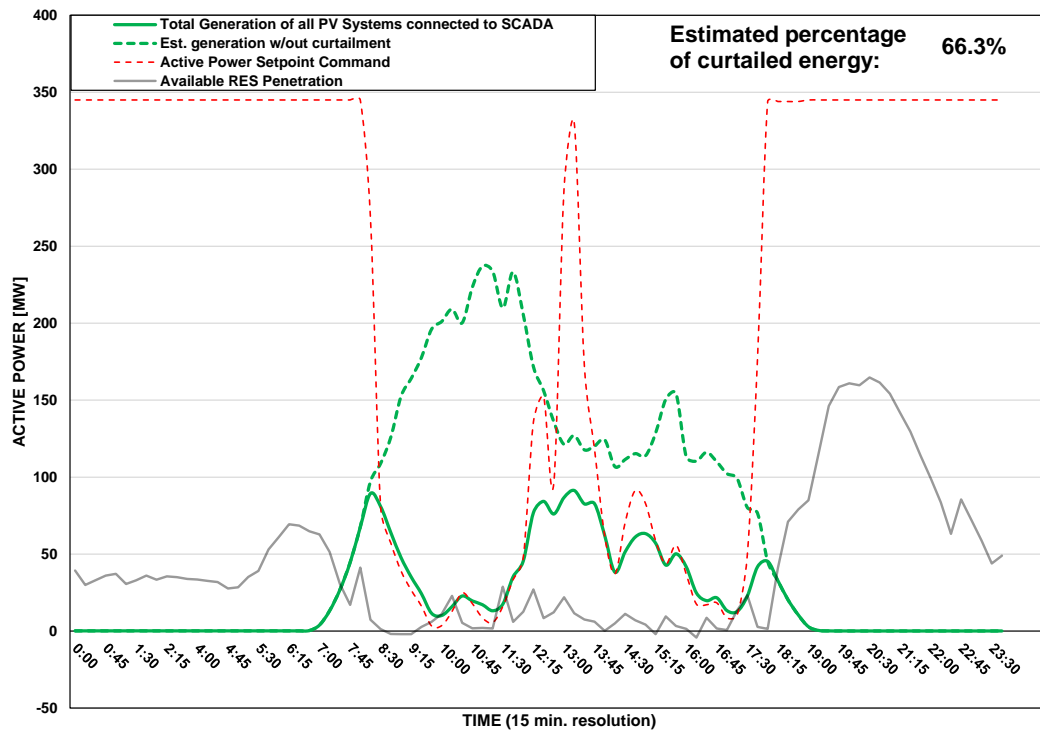
DISTRIBUTION SYSTEM OPERATOR SYSTEM OPERATION



PV Generation Curtailment Report

Date of Curtailment:	30/03/2025	Cut-off of PV Systems using RIPPLE and IoT:
Start of Curtailment	8:15	Cut-off areas using RIPPLE: NIC 2, LIM 2 Cut-off areas using IoT: PV-PAF3
End of Curtailment	17:45	
Instruction from TSOC	YES	Start of cut-off: 09:30 End of cut-off: 12:15
Reason of Curtailment:	RES-E Generation Restriction due to low loading of the electrical system	
Total Estimated Energy of the day:	1502.9 MWh	Total Est. Energy of the cut-off PV systems using RIPPLE: 60.2MWh
Total Estimated Curtailed Energy:	996 MWh	Total Est. Energy of the cut-off PV systems using IoT: 18.1MWh
Percentage of Curtailed Energy:	66.3%	

Scada PVs Generation on 30/03/2025 (curtailment time: 08:15 - 17:45)



DISTRIBUTION SYSTEM OPERATOR SYSTEM OPERATION



PV Generation Curtailment Report

Date of Curtailment:	31/03/2025	Cut-off of PV Systems using RIPPLE and IoT:
Start of Curtailment	9:30	Cut-off areas using RIPPLE: LIM 2 Cut-off areas using IoT: PV-LCA/FAM1, PV-LCA/FAM3
End of Curtailment	17:15	
Instruction from TSOC	YES	Start of cut-off: 12:45 End of cut-off: 16:15
Reason of Curtailment:	RES-E Generation Restriction due to low loading of the electrical system	
Total Estimated Energy of the day:	1859.4 MWh	Total Est. Energy of the cut-off PV systems using RIPPLE: 45.4MWh
Total Estimated Curtailed Energy:	1207.4 MWh	Total Est. Energy of the cut-off PV systems using IoT: 37.9MWh
Percentage of Curtailed Energy:	64.9%	

Scada PVs Generation on 31/03/2025 (curtailment time: 09:30 - 17:15)

