

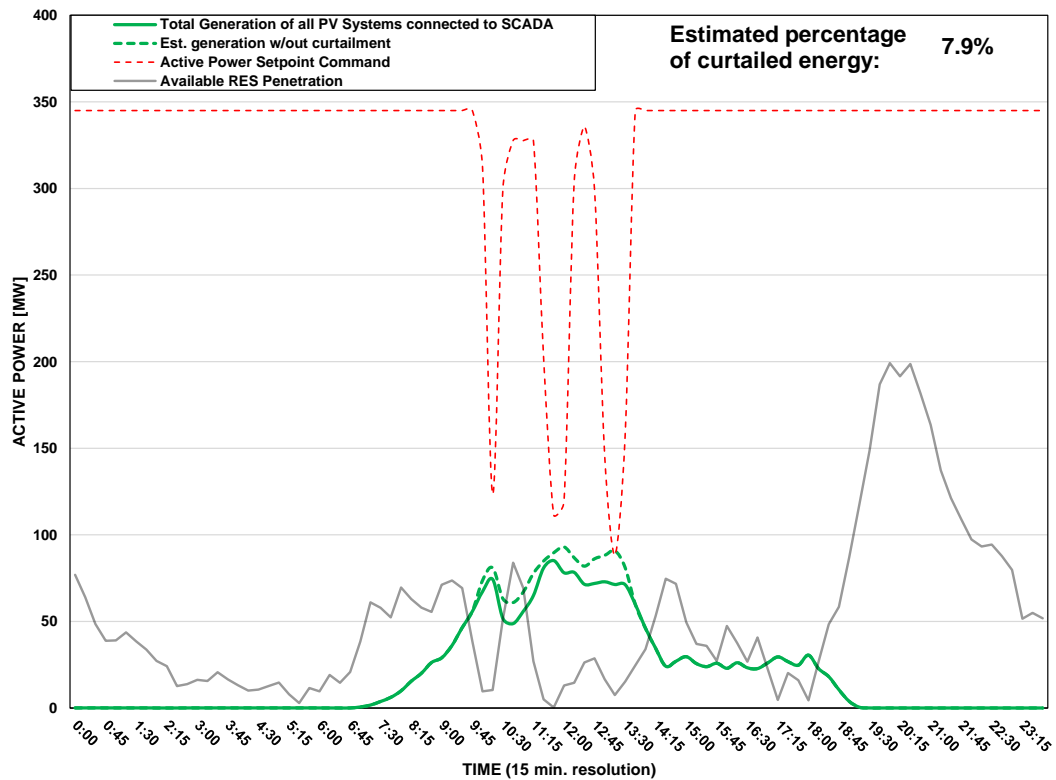
DISTRIBUTION SYSTEM OPERATOR SYSTEM OPERATION



PV Generation Curtailment Report

Date of Curtailment:	01/04/2025
Start of Curtailment	10:00
End of Curtailment	13:30
Instruction from TSOC	YES
Reason of Curtailment:	RES-E Generation Restriction due to low loading of the electrical system
Total Estimated Energy of the day:	511.2 MWh
Total Estimated Curtailed Energy:	40.4 MWh
Percentage of Curtailed Energy:	7.9%

Scada PVs Generation on 01/04/2025 (curtailment time: 10:00 - 13:30)



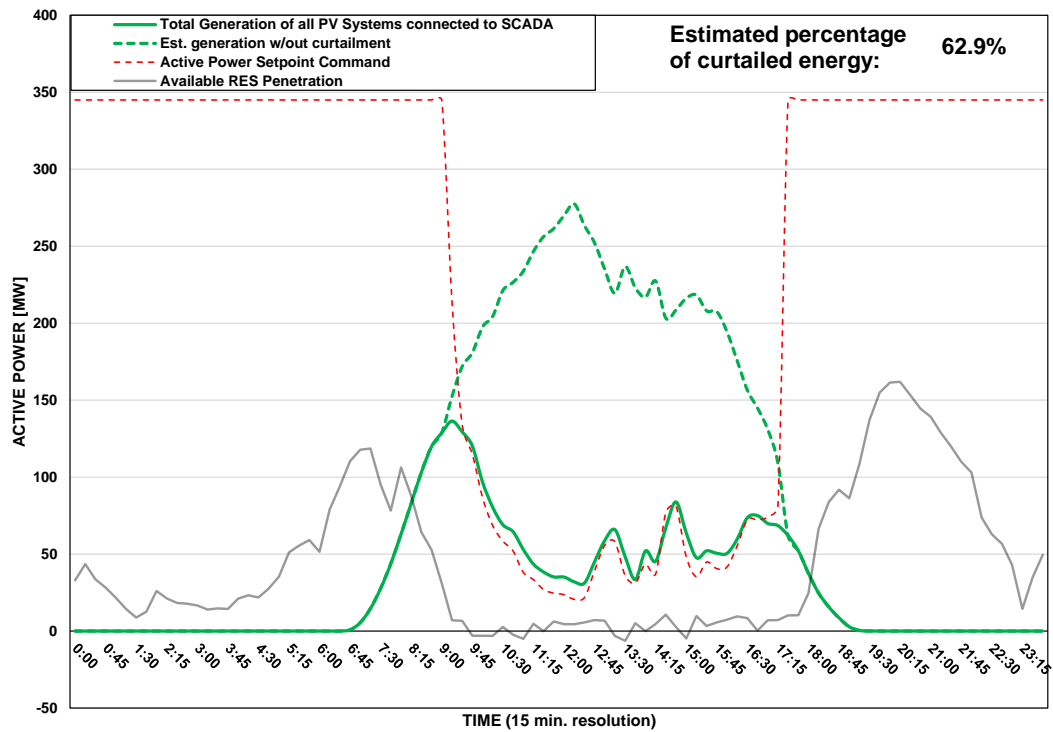
DISTRIBUTION SYSTEM OPERATOR SYSTEM OPERATION



PV Generation Curtailment Report

Date of Curtailment:	02/04/2025	Cut-off of PV Systems using RIPPLE:
Start of Curtailment	9:15	Cut-off areas using RIPPLE: NIC 1, NIC 3
End of Curtailment	17:15	
Instruction from TSOC	YES	Start of cut-off: 11:15 End of cut-off: 14:30
Reason of Curtailment:	RES-E Generation Restriction due to low loading of the electrical system	
Total Estimated Energy of the day:	1936 MWh	Total Est. Energy of the cut-off PV systems using RIPPLE: 59.4MWh
Total Estimated Curtailed Energy:	1217.9 MWh	
Percentage of Curtailed Energy:	62.9%	

Scada PVs Generation on 02/04/2025 (curtailment time: 09:15 - 17:15)



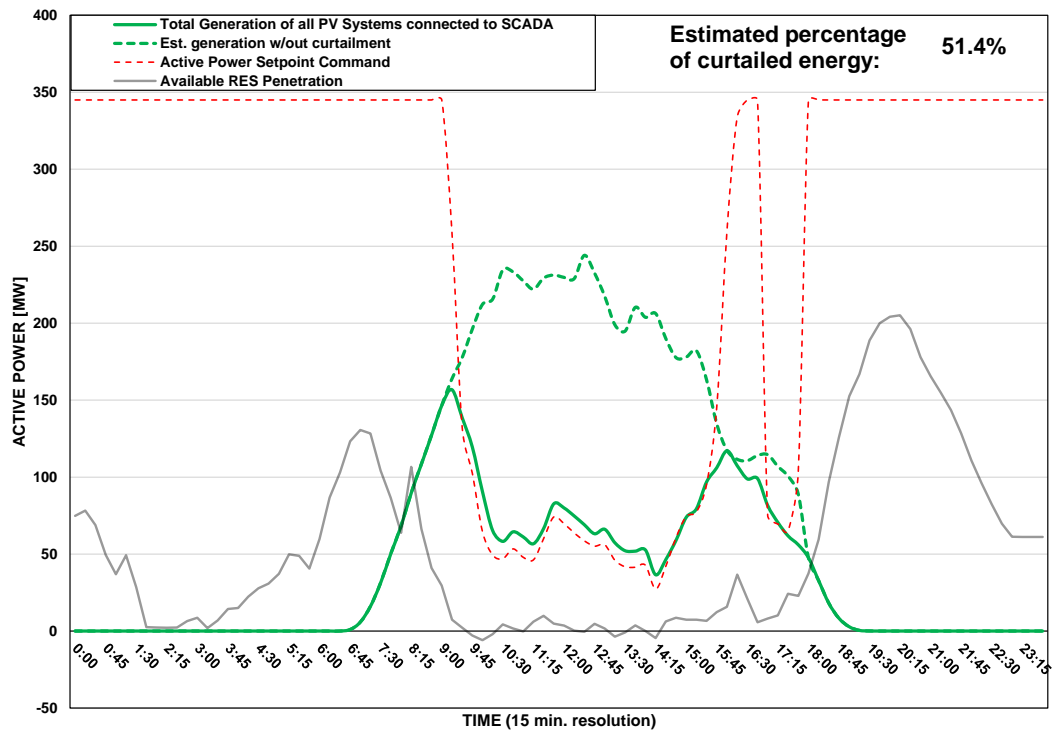
DISTRIBUTION SYSTEM OPERATOR SYSTEM OPERATION



PV Generation Curtailment Report

Date of Curtailment:	03/04/2025
Start of Curtailment	9:15
End of Curtailment	17:45
Instruction from TSOC	YES
Reason of Curtailment:	RES-E Generation Restriction due to low loading of the electrical system
Total Estimated Energy of the day:	1789.4 MWh
Total Estimated Curtailed Energy:	920.6 MWh
Percentage of Curtailed Energy:	51.4%

Scada PVs Generation on 03/04/2025 (curtailment time: 09:15 - 17:45)



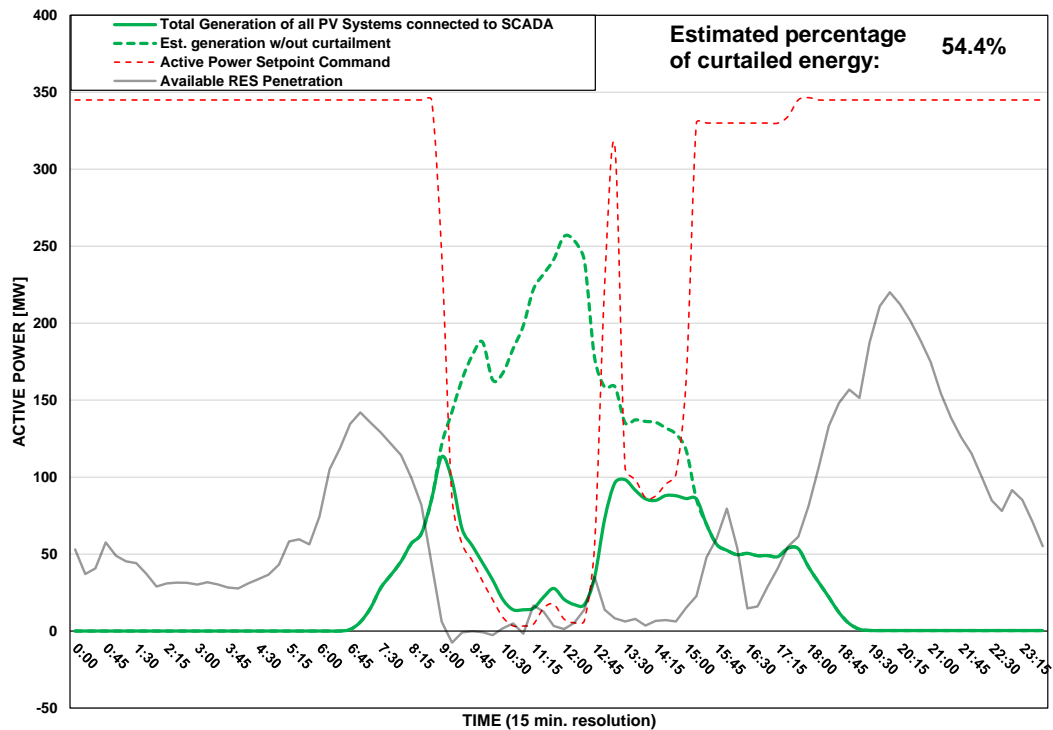
DISTRIBUTION SYSTEM OPERATOR SYSTEM OPERATION



PV Generation Curtailment Report

Date of Curtailment:	04/04/2025	Cut-off of PV Systems using RIPPLE and IoT:
Start of Curtailment	9:00	Cut-off areas using RIPPLE: NIC 3, LAR 1, LIM 2, PAF 1, PAF 2 Cut-off areas using IoT: PV-LIM3
End of Curtailment	15:00	
Instruction from TSOC	YES	Start of cut-off: 10:30 End of cut-off: 13:45
Reason of Curtailment:	RES-E Generation Restriction due to low loading of the electrical system	
Total Estimated Energy of the day:	1360.9 MWh	Total Est. Energy of the cut-off PV systems using RIPPLE: 179.4MWh
Total Estimated Curtailed Energy:	740.9 MWh	Total Est. Energy of the cut-off PV systems using IoT: 33.8MWh
Percentage of Curtailed Energy:	54.4%	

Scada PVs Generation on 04/04/2025 (curtailment time: 09:00 - 15:00)



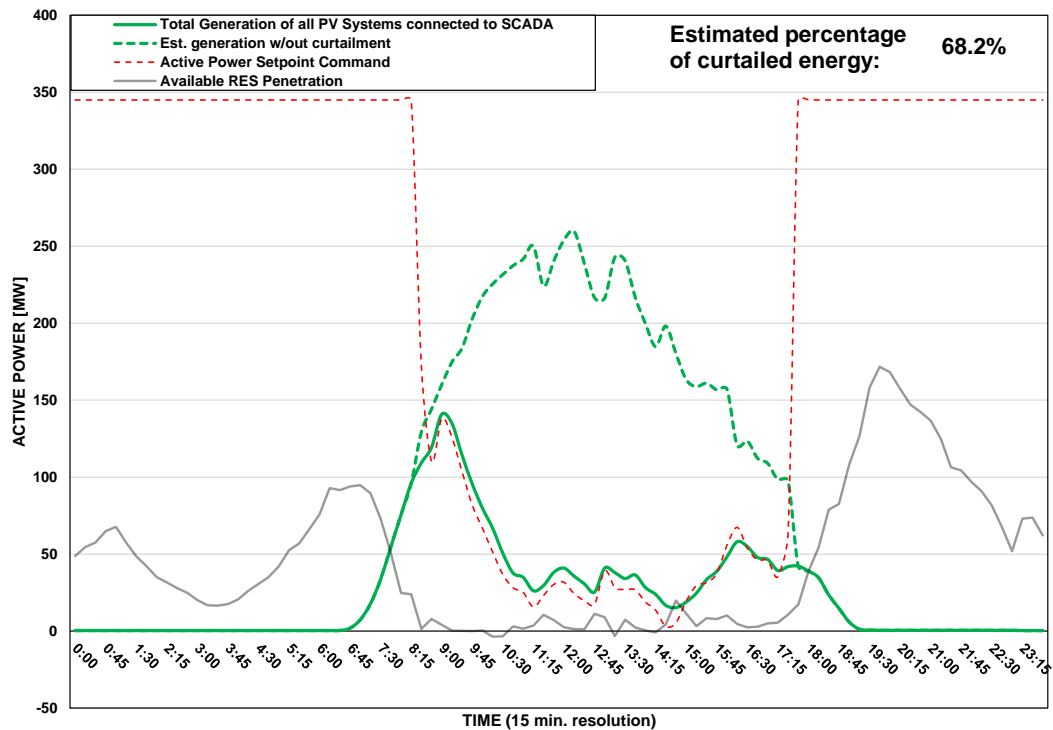
DISTRIBUTION SYSTEM OPERATOR SYSTEM OPERATION



PV Generation Curtailment Report

Date of Curtailment:	05/04/2025	Cut-off of PV Systems using RIPPLE and IoT:
Start of Curtailment	8:30	Cut-off areas using RIPPLE: NIC 1 Cut-off areas using IoT: PV-LCA/FAM1
End of Curtailment	17:30	
Instruction from TSOC	YES	Start of cut-off: 11:15 End of cut-off: 16:00
Reason of Curtailment:	RES-E Generation Restriction due to low loading of the electrical system	
Total Estimated Energy of the day:	1858.8 MWh	Total Est. Energy of the cut-off PV systems using RIPPLE: 41.7MWh
Total Estimated Curtailed Energy:	1268.5 MWh	Total Est. Energy of the cut-off PV systems using IoT: 22.9MWh
Percentage of Curtailed Energy:	68.2%	

Scada PVs Generation on 05/04/2025 (curtailment time: 08:30 - 17:30)



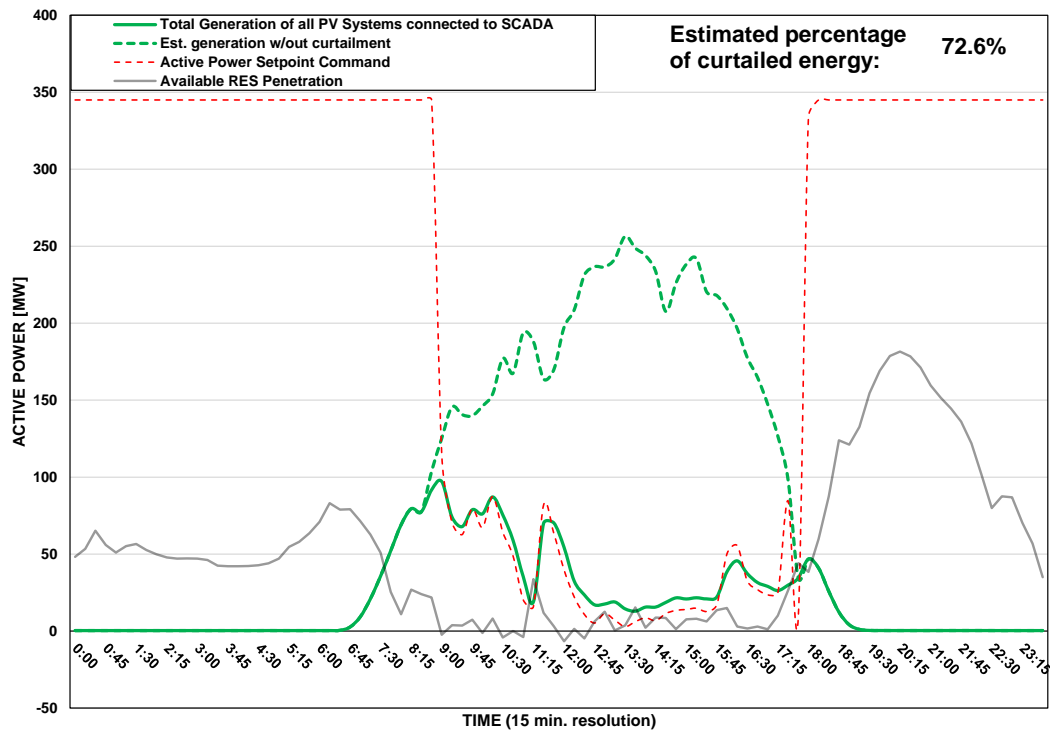
DISTRIBUTION SYSTEM OPERATOR SYSTEM OPERATION



PV Generation Curtailment Report

Date of Curtailment:	06/04/2025	Cut-off of PV Systems using RIPPLE and IoT:
Start of Curtailment	8:45	Cut-off areas using RIPPLE: NIC 3, LAR 1, LAR 2, LIM 1, PAF 2 Cut-off areas using IoT: PV-PAF3
End of Curtailment	17:30	
Instruction from TSOC	YES	Start of cut-off: 11:00 End of cut-off: 17:45
Reason of Curtailment:	RES-E Generation Restriction due to low loading of the electrical system	
Total Estimated Energy of the day:	1837.6 MWh	Total Est. Energy of the cut-off PV systems using RIPPLE: 423.5MWh
Total Estimated Curtailed Energy:	1333.7 MWh	Total Est. Energy of the cut-off PV systems using IoT: 33.6MWh
Percentage of Curtailed Energy:	72.6%	

Scada PVs Generation on 06/04/2025 (curtailment time: 08:45 - 17:30)



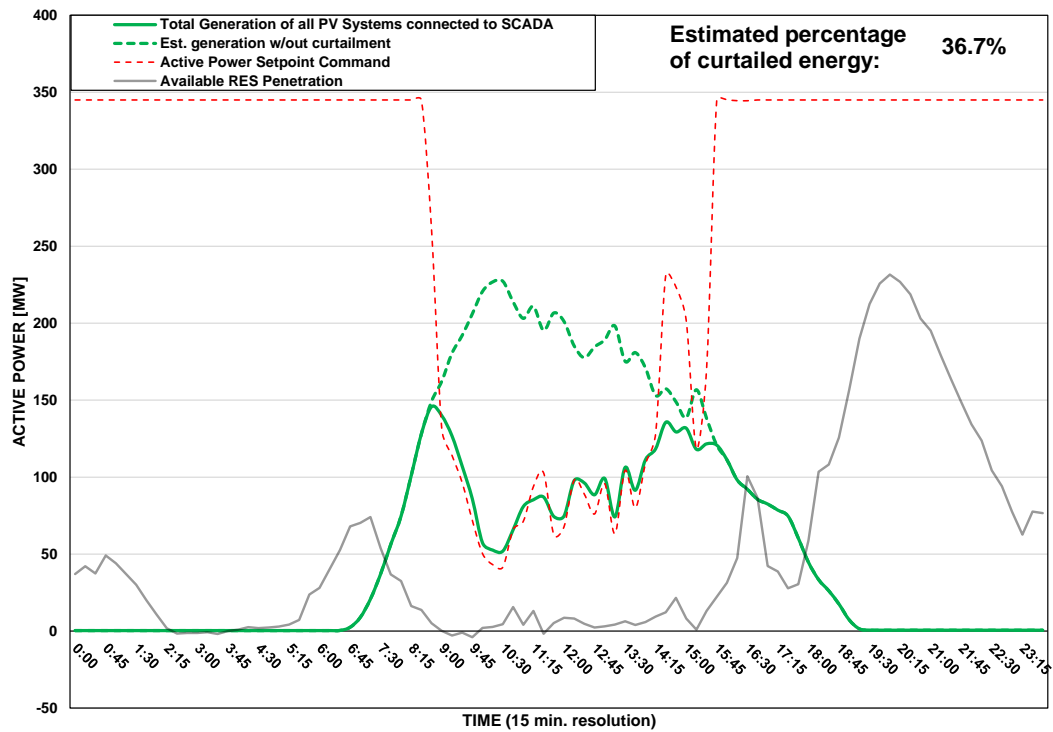
DISTRIBUTION SYSTEM OPERATOR SYSTEM OPERATION



PV Generation Curtailment Report

Date of Curtailment:	07/04/2025	Cut-off of PV Systems using RIPPLE:
Start of Curtailment	8:45	Cut-off areas using RIPPLE: NIC 1, LIM 2
End of Curtailment	15:30	
Instruction from TSOC	YES	Start of cut-off: 11:00 End of cut-off: 11:15
Reason of Curtailment:	RES-E Generation Restriction due to low loading of the electrical system	
Total Estimated Energy of the day:	1633.3 MWh	Total Est. Energy of the cut-off PV systems using RIPPLE: 10.5MWh
Total Estimated Curtailed Energy:	598.8 MWh	
Percentage of Curtailed Energy:	36.7%	

Scada PVs Generation on 07/04/2025 (curtailment time: 08:45 - 15:30)



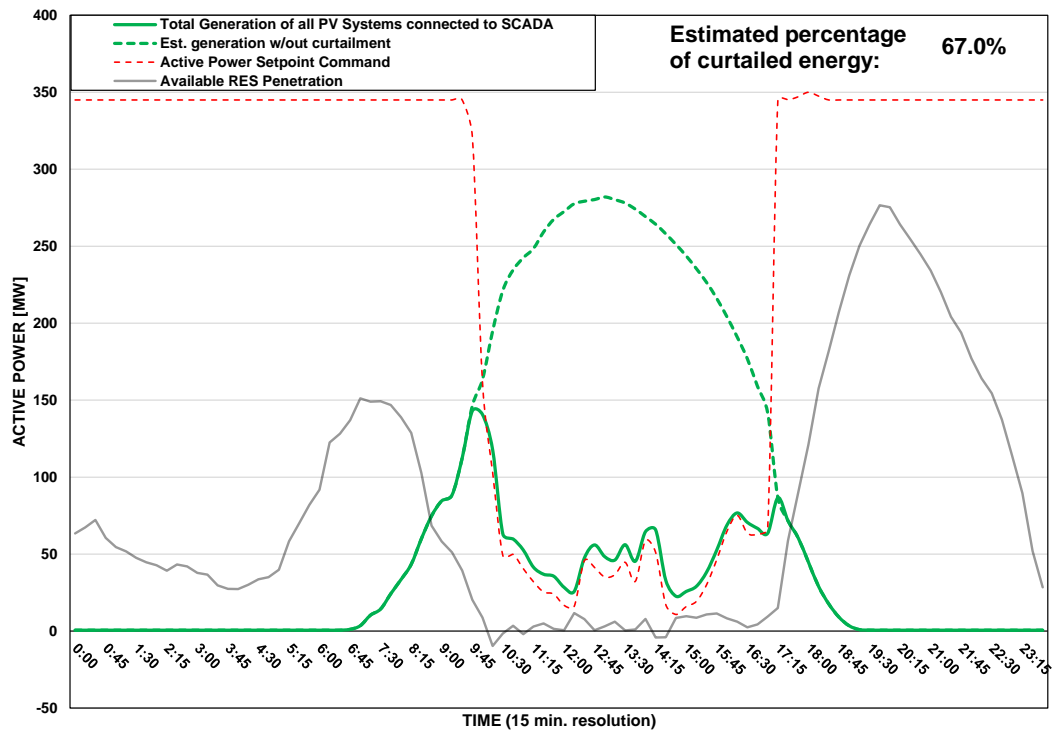
DISTRIBUTION SYSTEM OPERATOR SYSTEM OPERATION



PV Generation Curtailment Report

Date of Curtailment:	08/04/2025	Cut-off of PV Systems using RIPPLE and IoT:
Start of Curtailment	9:45	Cut-off areas using RIPPLE: NIC 3, LIM 2, PAF 2 Cut-off areas using IoT: PV-NIC1, PV-NIC4, PV-LCA/FAM3, PV-LIM3
End of Curtailment	17:00	
Instruction from TSOC	YES	Start of cut-off: 10:15 End of cut-off: 16:45
Reason of Curtailment:	RES-E Generation Restriction due to low loading of the electrical system	
Total Estimated Energy of the day:	1984.6 MWh	Total Est. Energy of the cut-off PV systems using RIPPLE: 208MWh
Total Estimated Curtailed Energy:	1329.4 MWh	Total Est. Energy of the cut-off PV systems using IoT: 114.4MWh
Percentage of Curtailed Energy:	67.0%	

Scada PVs Generation on 08/04/2025 (curtailment time: 09:45 - 17:00)



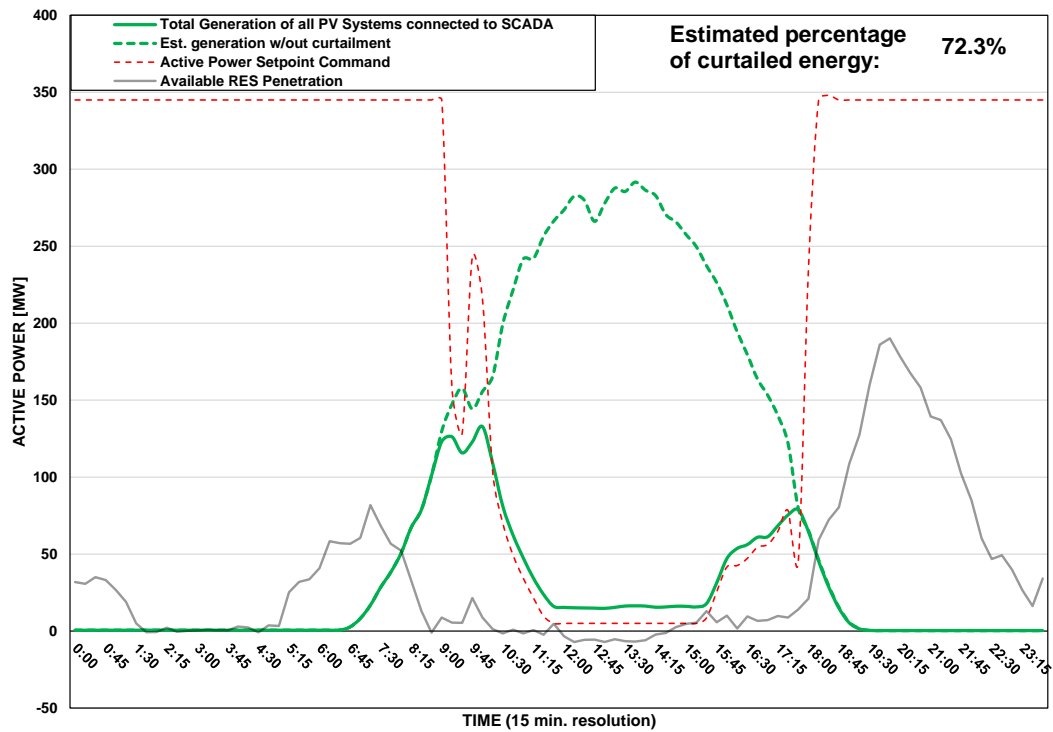
DISTRIBUTION SYSTEM OPERATOR SYSTEM OPERATION



PV Generation Curtailment Report

Date of Curtailment:	09/04/2025	Cut-off of PV Systems using RIPPLE:
Start of Curtailment	9:00	Cut-off areas using RIPPLE: LAR 2
End of Curtailment	17:30	
Instruction from TSOC	YES	Start of cut-off: 13:00 End of cut-off: 16:00
Reason of Curtailment:	RES-E Generation Restriction due to low loading of the electrical system	
Total Estimated Energy of the day:	2117.7 MWh	Total Est. Energy of the cut-off PV systems using RIPPLE: 63.2MWh
Total Estimated Curtailed Energy:	1532 MWh	
Percentage of Curtailed Energy:	72.3%	

Scada PVs Generation on 09/04/2025 (curtailment time: 09:00 - 17:30)



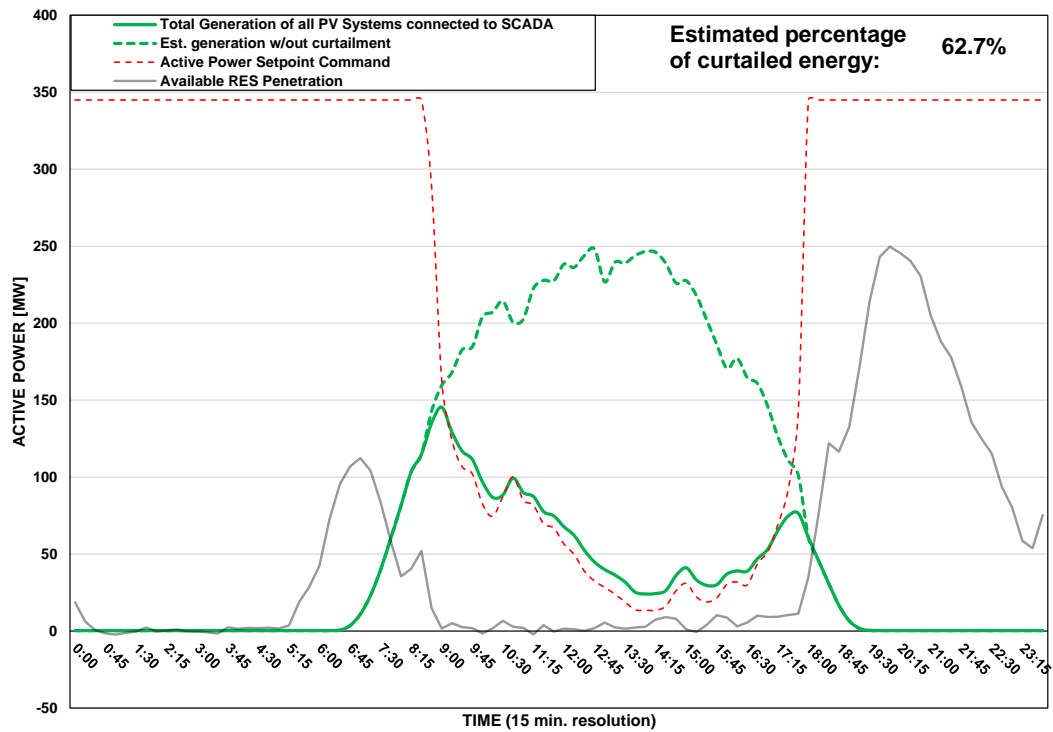
DISTRIBUTION SYSTEM OPERATOR SYSTEM OPERATION



PV Generation Curtailment Report

Date of Curtailment:	10/04/2025
Start of Curtailment	8:45
End of Curtailment	17:45
Instruction from TSOC	YES
Reason of Curtailment:	RES-E Generation Restriction due to low loading of the electrical system
Total Estimated Energy of the day:	2006.2 MWh
Total Estimated Curtailed Energy:	1258.3 MWh
Percentage of Curtailed Energy:	62.7%

Scada PVs Generation on 10/04/2025 (curtailment time: 08:45 - 17:45)



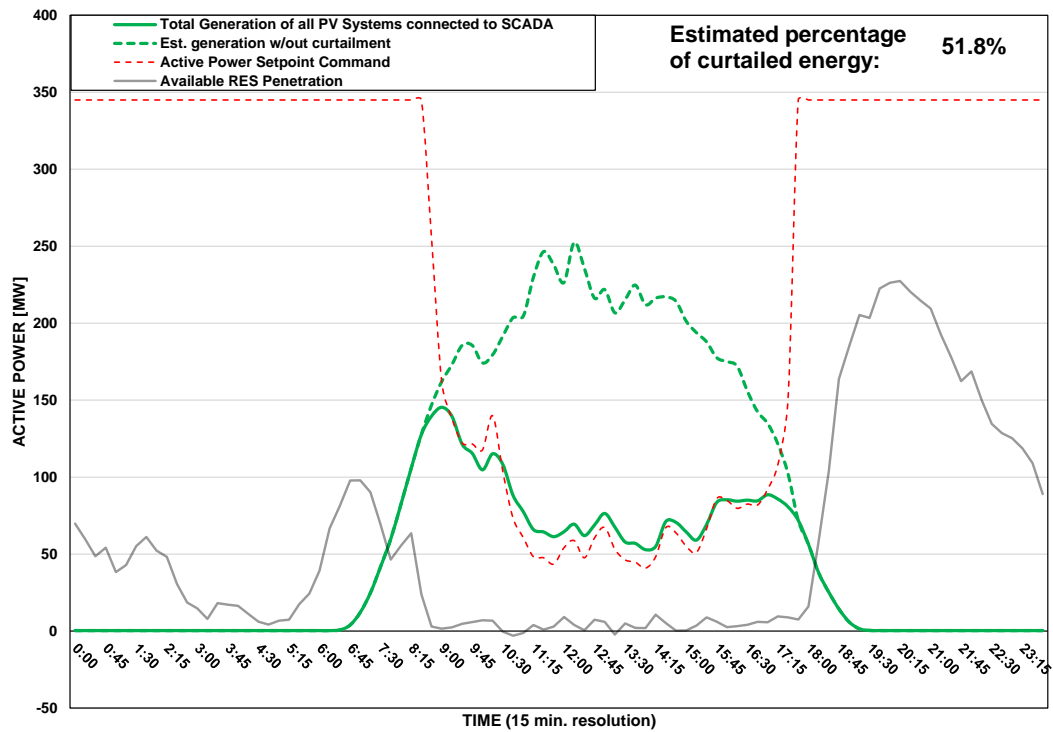
DISTRIBUTION SYSTEM OPERATOR SYSTEM OPERATION



PV Generation Curtailment Report

Date of Curtailment:	11/04/2025
Start of Curtailment	8:45
End of Curtailment	17:30
Instruction from TSOC	YES
Reason of Curtailment:	RES-E Generation Restriction due to low loading of the electrical system
Total Estimated Energy of the day:	1907.9 MWh
Total Estimated Curtailed Energy:	988.5 MWh
Percentage of Curtailed Energy:	51.8%

Scada PVs Generation on 11/04/2025 (curtailment time: 08:45 - 17:30)



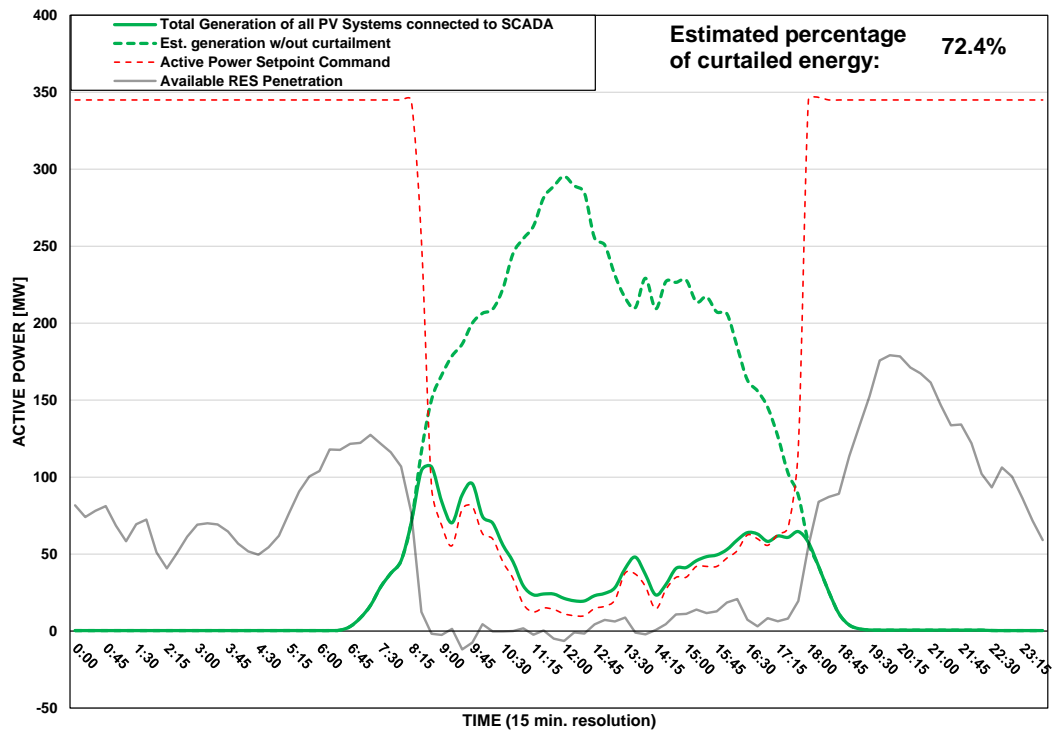
DISTRIBUTION SYSTEM OPERATOR SYSTEM OPERATION



PV Generation Curtailment Report

Date of Curtailment:	12/04/2025	Cut-off of PV Systems using RIPPLE and IoT:
Start of Curtailment	8:30	Cut-off areas using RIPPLE: PAF 2 Cut-off areas using IoT: PV-LCA/FAM1, PV-LIM3
End of Curtailment	17:45	
Instruction from TSOC	YES	Start of cut-off: 11:00 End of cut-off: 15:00
Reason of Curtailment:	RES-E Generation Restriction due to low loading of the electrical system	
Total Estimated Energy of the day:	2076 MWh	Total Est. Energy of the cut-off PV systems using RIPPLE: 44.1MWh
Total Estimated Curtailed Energy:	1503.2 MWh	Total Est. Energy of the cut-off PV systems using IoT: 65.8MWh
Percentage of Curtailed Energy:	72.4%	

Scada PVs Generation on 12/04/2025 (curtailment time: 08:30 - 17:45)



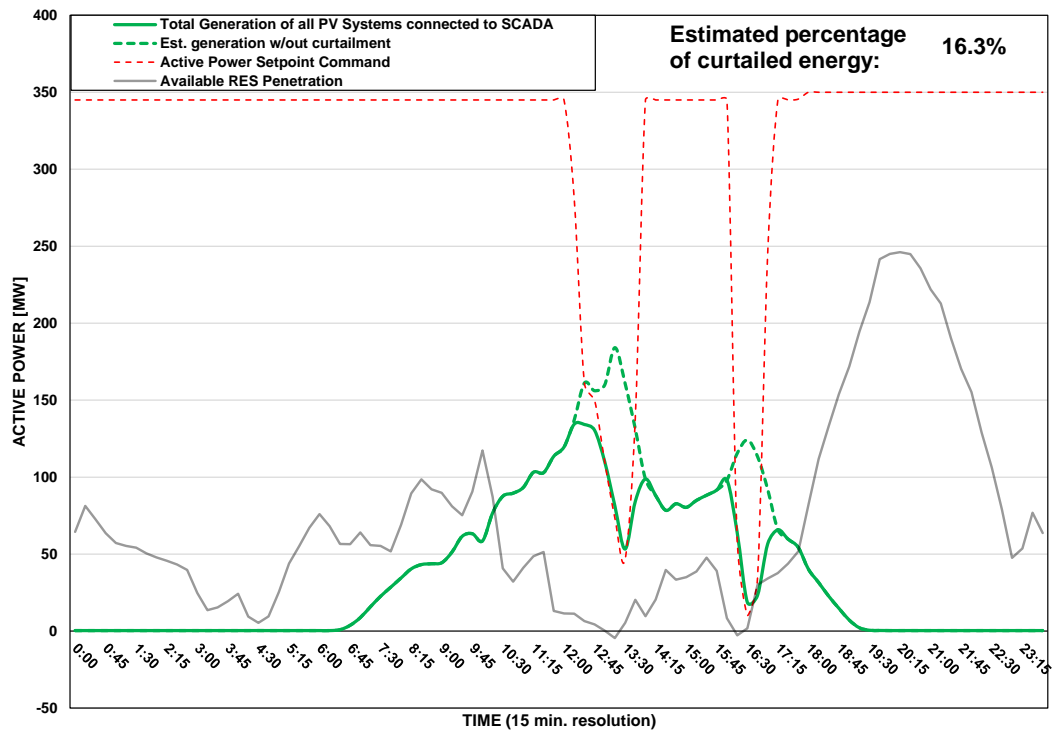
DISTRIBUTION SYSTEM OPERATOR SYSTEM OPERATION



PV Generation Curtailment Report

Date of Curtailment:	13/04/2025
Start of Curtailment	12:15
End of Curtailment	17:00
Instruction from TSOC	YES
Reason of Curtailment:	RES-E Generation Restriction due to low loading of the electrical system
Total Estimated Energy of the day:	986.6 MWh
Total Estimated Curtailed Energy:	161.2 MWh
Percentage of Curtailed Energy:	16.3%

Scada PVs Generation on 13/04/2025 (curtailment time: 12:15 - 17:00)



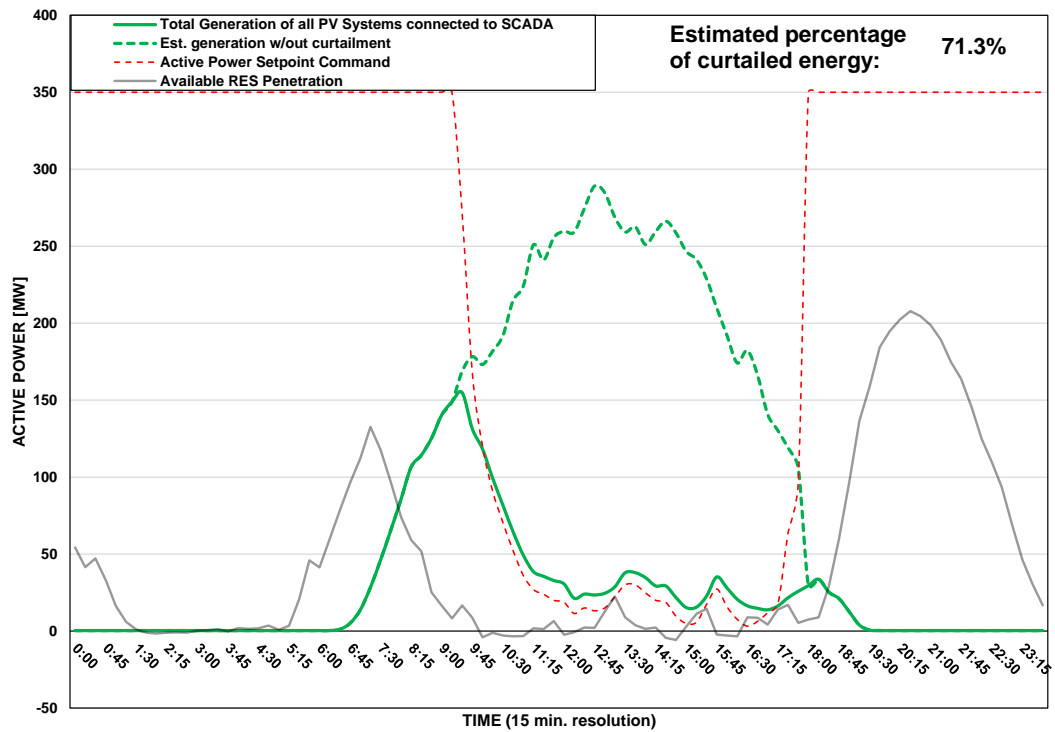
DISTRIBUTION SYSTEM OPERATOR SYSTEM OPERATION



PV Generation Curtailment Report

Date of Curtailment:	14/04/2025	Cut-off of PV Systems using RIPPLE and IoT:
Start of Curtailment	9:30	Cut-off areas using RIPPLE: NIC 3, LAR 2 Cut-off areas using IoT: PV-NIC1, PV-NIC4, PV-LCA/FAM3, PV-PAF3
End of Curtailment	17:45	
Instruction from TSOC	YES	Start of cut-off: 12:15 End of cut-off: 17:45
Reason of Curtailment:	RES-E Generation Restriction due to low loading of the electrical system	
Total Estimated Energy of the day:	2108.2 MWh	Total Est. Energy of the cut-off PV systems using RIPPLE: 48MWh
Total Estimated Curtailed Energy:	1503.7 MWh	Total Est. Energy of the cut-off PV systems using IoT: 101.2MWh
Percentage of Curtailed Energy:	71.3%	

Scada PVs Generation on 14/04/2025 (curtailment time: 09:30 - 17:45)



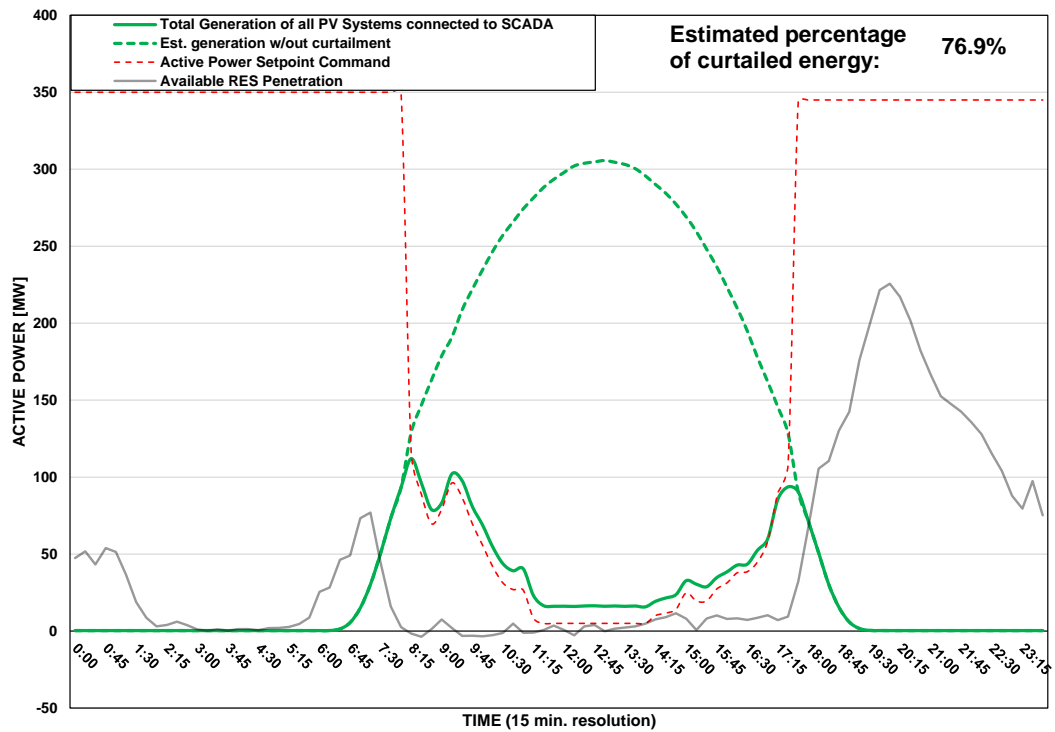
DISTRIBUTION SYSTEM OPERATOR SYSTEM OPERATION



PV Generation Curtailment Report

Date of Curtailment:	15/04/2025	Cut-off of PV Systems using RIPPLE and IoT:
Start of Curtailment	8:15	Cut-off areas using RIPPLE: LIM 1 Cut-off areas using IoT: PV-LIM3
End of Curtailment	17:30	
Instruction from TSOC	YES	Start of cut-off: 11:30 End of cut-off: 17:00
Reason of Curtailment:	RES-E Generation Restriction due to low loading of the electrical system	
Total Estimated Energy of the day:	2438.7 MWh	Total Est. Energy of the cut-off PV systems using RIPPLE: 97.4MWh
Total Estimated Curtailed Energy:	1874.7 MWh	Total Est. Energy of the cut-off PV systems using IoT: 55MWh
Percentage of Curtailed Energy:	76.9%	

Scada PVs Generation on 15/04/2025 (curtailment time: 08:15 - 17:30)



DISTRIBUTION SYSTEM OPERATOR SYSTEM OPERATION

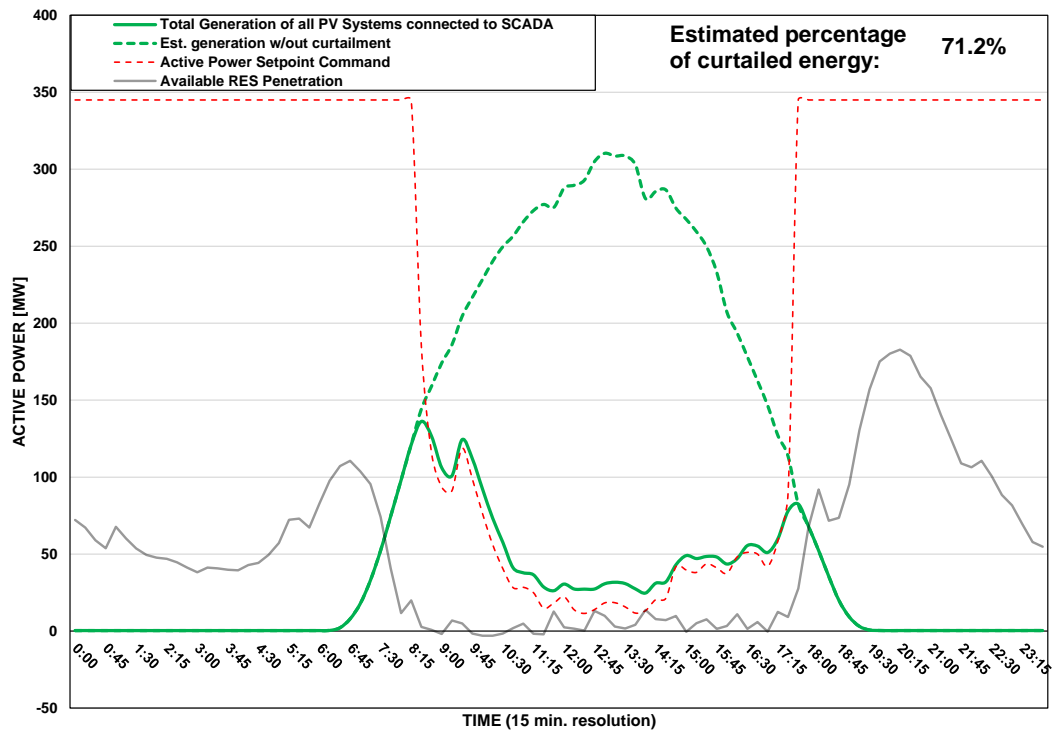


Αρχή Ηλεκτρισμού Κύπρου
Διανομή

PV Generation Curtailment Report

Date of Curtailment:	16/04/2025	Cut-off of PV Systems using RIPPLE and IoT:
Start of Curtailment	8:30	Cut-off areas using RIPPLE: NIC 1, NIC 3 Cut-off areas using IoT: PV-LCA/FAM1
End of Curtailment	17:30	
Instruction from TSOC	YES	Start of cut-off: 11:30 End of cut-off: 16:45
Reason of Curtailment:	RES-E Generation Restriction due to low loading of the electrical system	
Total Estimated Energy of the day:	2378.9 MWh	Total Est. Energy of the cut-off PV systems using RIPPLE: 212.6MWh
Total Estimated Curtailed Energy:	1694.2 MWh	Total Est. Energy of the cut-off PV systems using IoT: 37.8MWh
Percentage of Curtailed Energy:	71.2%	

Scada PVs Generation on 16/04/2025 (curtailment time: 08:30 - 17:30)



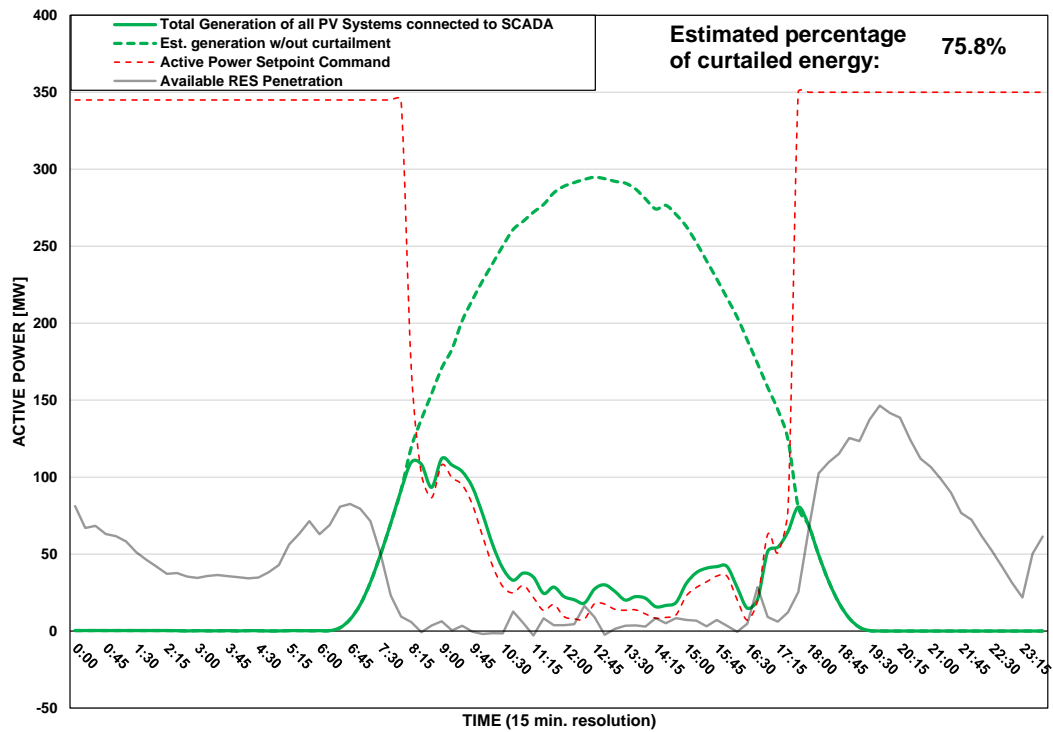
DISTRIBUTION SYSTEM OPERATOR SYSTEM OPERATION



PV Generation Curtailment Report

Date of Curtailment:	17/04/2025	Cut-off of PV Systems using RIPPLE:
Start of Curtailment	8:15	Cut-off areas using RIPPLE: NIC 3, LAR 1, LIM 2
End of Curtailment	17:30	
Instruction from TSOC	YES	Start of cut-off: 10:30 End of cut-off: 16:45
Reason of Curtailment:	RES-E Generation Restriction due to low loading of the electrical system	
Total Estimated Energy of the day:	2356.3 MWh	Total Est. Energy of the cut-off PV systems using RIPPLE: 304.6MWh
Total Estimated Curtailed Energy:	1785.1 MWh	
Percentage of Curtailed Energy:	75.8%	

Scada PVs Generation on 17/04/2025 (curtailment time: 08:15 - 17:30)



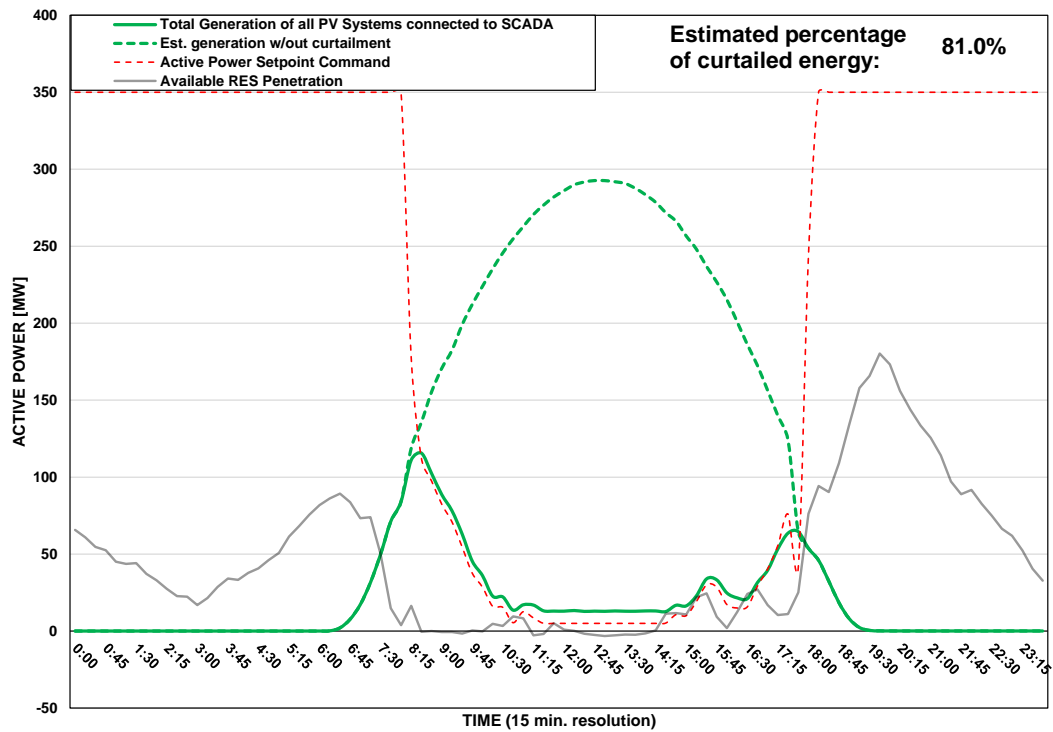
DISTRIBUTION SYSTEM OPERATOR SYSTEM OPERATION



PV Generation Curtailment Report

Date of Curtailment:	18/04/2025	Cut-off of PV Systems using RIPPLE and IoT:
Start of Curtailment	8:15	Cut-off areas using RIPPLE: NIC 2, PAF 1 Cut-off areas using IoT: PV-NIC1, PV-NIC4, PV-LCA/FAM1, PV-LCA/FAM3
End of Curtailment	17:30	
Instruction from TSOC	YES	Start of cut-off: 10:00 End of cut-off: 15:00
Reason of Curtailment:	RES-E Generation Restriction due to low loading of the electrical system	
Total Estimated Energy of the day:	2325.9 MWh	Total Est. Energy of the cut-off PV systems using RIPPLE: 65.3MWh
Total Estimated Curtailed Energy:	1883 MWh	Total Est. Energy of the cut-off PV systems using IoT: 164.8MWh
Percentage of Curtailed Energy:	81.0%	

Scada PVs Generation on 18/04/2025 (curtailment time: 08:15 - 17:30)



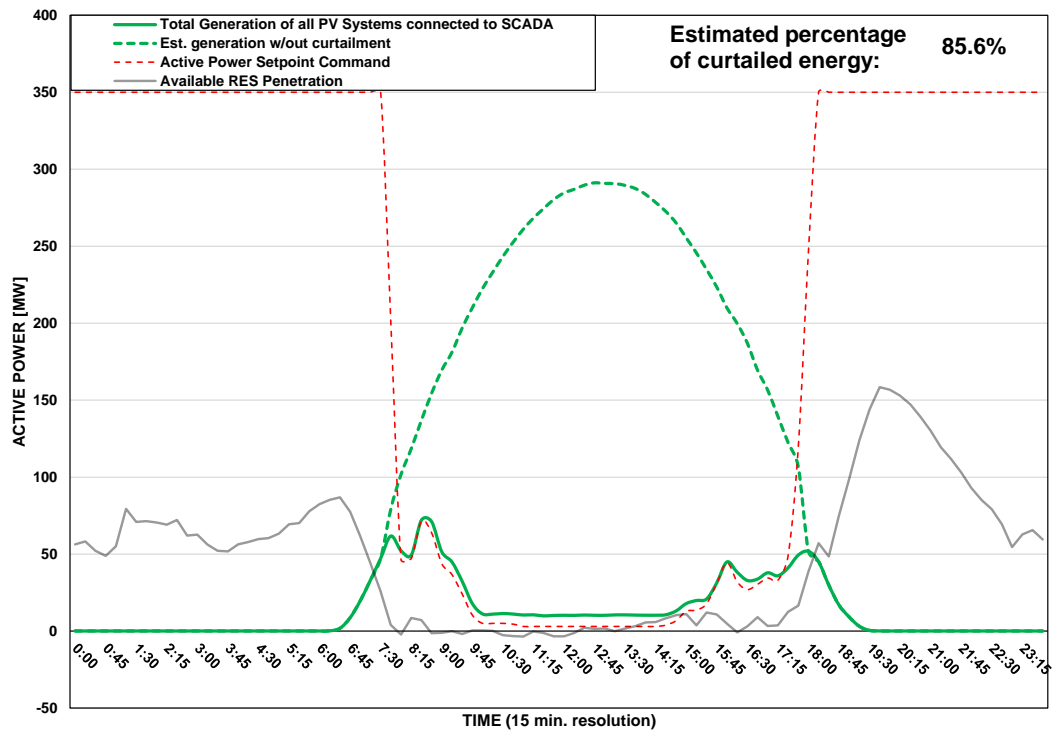
DISTRIBUTION SYSTEM OPERATOR SYSTEM OPERATION



PV Generation Curtailment Report

Date of Curtailment:	19/04/2025	Cut-off of PV Systems using RIPPLE and IoT:
Start of Curtailment	7:45	Cut-off areas using RIPPLE: NIC 1, NIC 2, LAR 1, LAR 2, LIM 1, PAF 1 Cut-off areas using IoT: PV-LCA/FAM3, PV-LIM3
End of Curtailment	17:45	
Instruction from TSOC	YES	Start of cut-off: 09:15 End of cut-off: 12:00
Reason of Curtailment:	RES-E Generation Restriction due to low loading of the electrical system	
Total Estimated Energy of the day:	2328.8 MWh	Total Est. Energy of the cut-off PV systems using RIPPLE: 176.8MWh
Total Estimated Curtailed Energy:	1994 MWh	Total Est. Energy of the cut-off PV systems using IoT: 21.3MWh
Percentage of Curtailed Energy:	85.6%	

Scada PVs Generation on 19/04/2025 (curtailment time: 07:45 - 17:45)



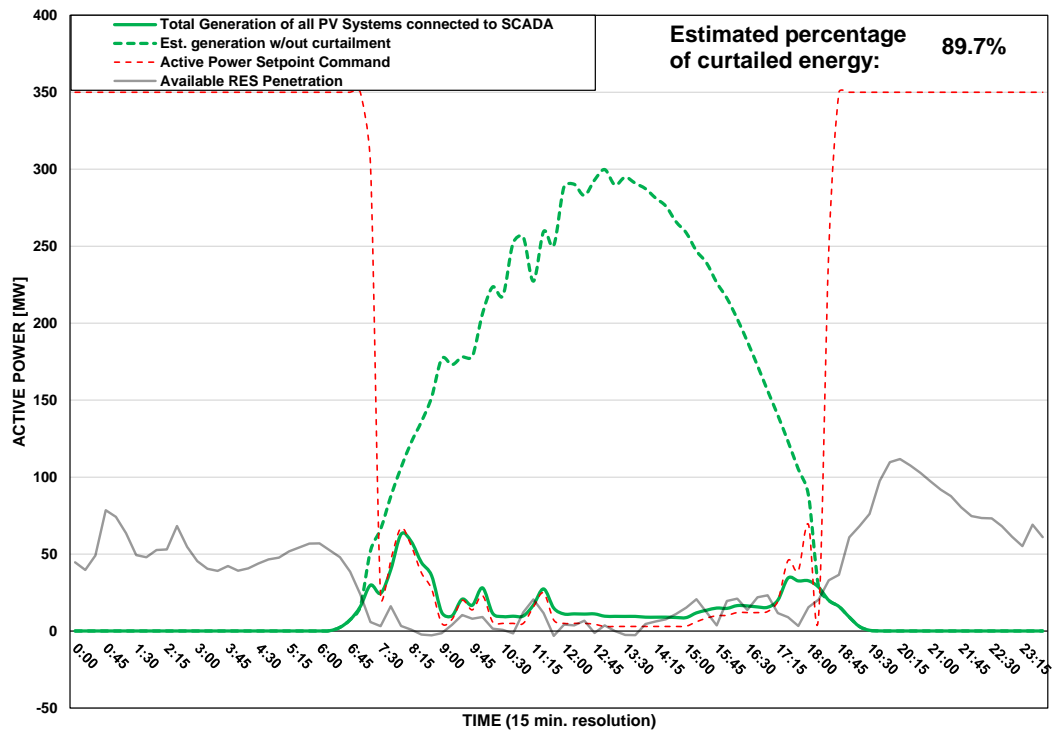
DISTRIBUTION SYSTEM OPERATOR SYSTEM OPERATION



PV Generation Curtailment Report

Date of Curtailment:	20/04/2025	<u>Cut-off of PV Systems using RIPPLE and IoT:</u>
Start of Curtailment	7:15	Cut-off areas using RIPPLE: NIC 1, NIC 2, NIC 3, LAR 1, LAR 2, LIM 1, LIM 2, PAF 1
End of Curtailment	18:00	Cut-off areas using IoT: PV-NIC1, PV-NIC4, PV-LCA/FAM1, PV-LCA/FAM3, PV-LIM3
Instruction from TSOC	YES	Start of cut-off: 09:00 End of cut-off: 17:00
Reason of Curtailment:	RES-E Generation Restriction due to low loading of the electrical system	
Total Estimated Energy of the day:	2307.7 MWh	Total Est. Energy of the cut-off PV systems using RIPPLE: 728.5MWh
Total Estimated Curtailed Energy:	2069.2 MWh	Total Est. Energy of the cut-off PV systems using IoT: 265.1MWh
Percentage of Curtailed Energy:	89.7%	

Scada PVs Generation on 20/04/2025 (curtailment time: 07:15 - 18:00)



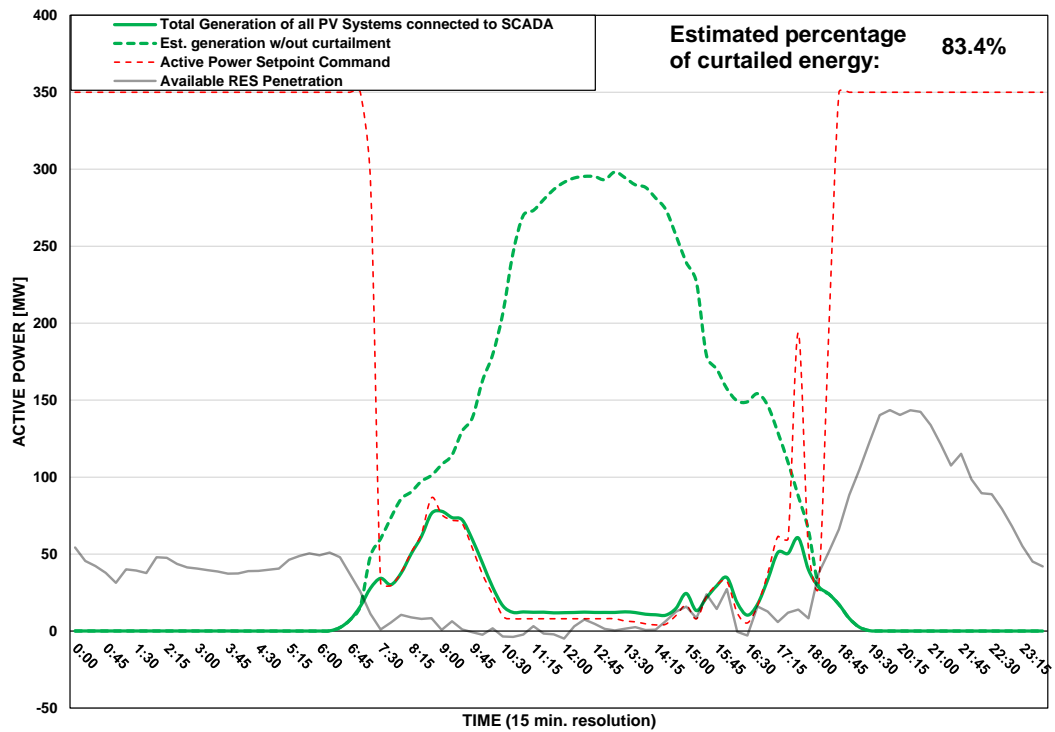
DISTRIBUTION SYSTEM OPERATOR SYSTEM OPERATION



PV Generation Curtailment Report

Date of Curtailment:	21/04/2025	Cut-off of PV Systems using RIPPLE and IoT:
Start of Curtailment	7:15	Cut-off areas using RIPPLE: NIC 1, NIC 2, LAR 1, LAR 2, LIM 1, PAF 1, PAF 2 Cut-off areas using IoT: PV-NIC1, PV-NIC4, PV-LCA/FAM3, PV-LIM3, PV-PAF3
End of Curtailment	18:00	
Instruction from TSOC	YES	Start of cut-off: 10:00 End of cut-off: 18:00
Reason of Curtailment:	RES-E Generation Restriction due to low loading of the electrical system	
Total Estimated Energy of the day:	2119.3 MWh	Total Est. Energy of the cut-off PV systems using RIPPLE: 502.2MWh
Total Estimated Curtailed Energy:	1767.2 MWh	Total Est. Energy of the cut-off PV systems using IoT: 240.4MWh
Percentage of Curtailed Energy:	83.4%	

Scada PVs Generation on 21/04/2025 (curtailment time: 07:15 - 18:00)



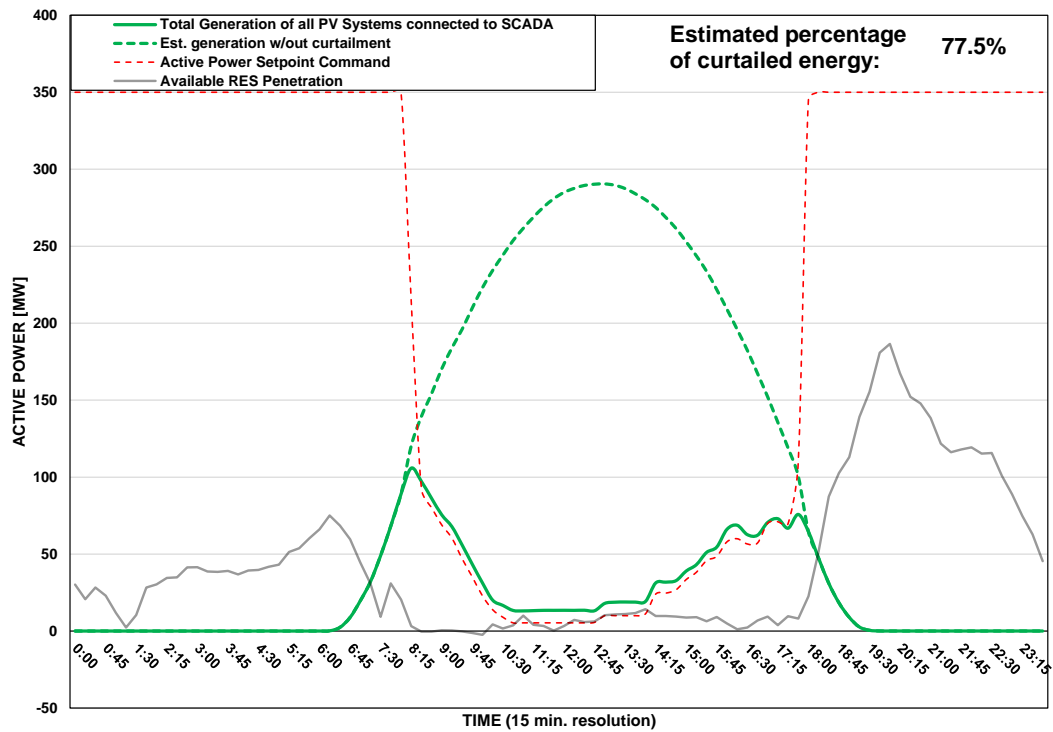
DISTRIBUTION SYSTEM OPERATOR SYSTEM OPERATION



PV Generation Curtailment Report

Date of Curtailment:	22/04/2025	Cut-off of PV Systems using RIPPLE and IoT:
Start of Curtailment	8:15	Cut-off areas using RIPPLE: NIC 2, LIM 1, PAF 1 Cut-off areas using IoT: PV-NIC1, PV-NIC4, PV-LCA/FAM1
End of Curtailment	17:45	
Instruction from TSOC	YES	Start of cut-off: 10:00 End of cut-off: 16:45
Reason of Curtailment:	RES-E Generation Restriction due to low loading of the electrical system	
Total Estimated Energy of the day:	2316 MWh	Total Est. Energy of the cut-off PV systems using RIPPLE: 202.8MWh
Total Estimated Curtailed Energy:	1794.2 MWh	Total Est. Energy of the cut-off PV systems using IoT: 210.4MWh
Percentage of Curtailed Energy:	77.5%	

Scada PVs Generation on 22/04/2025 (curtailment time: 08:15 - 17:45)



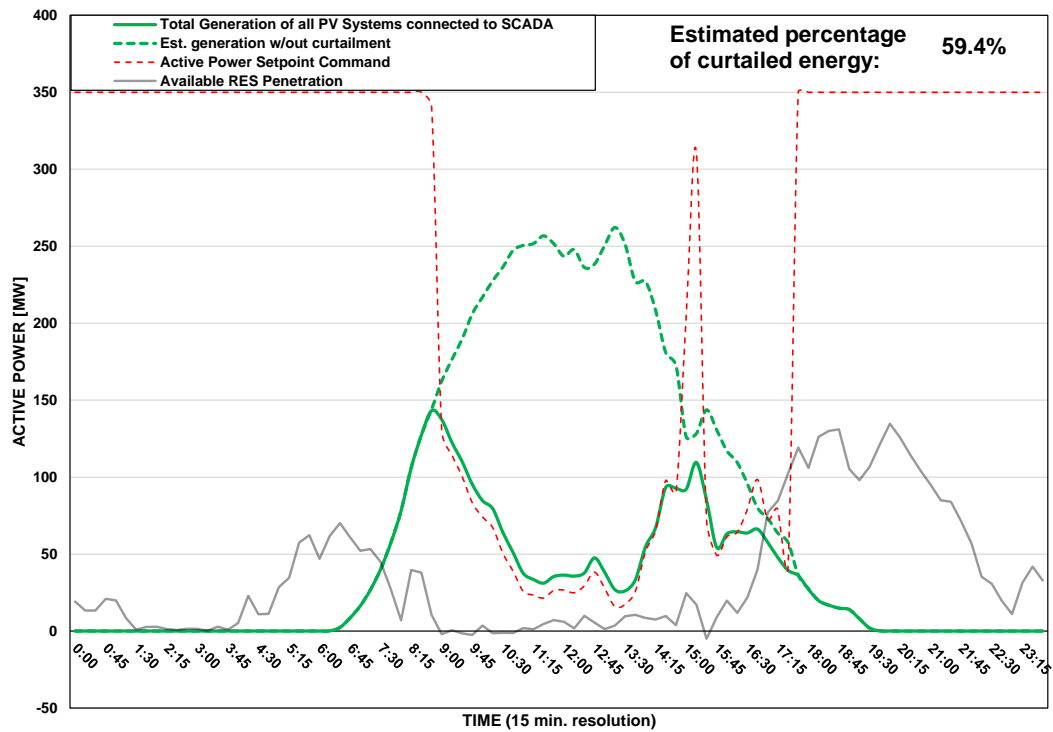
DISTRIBUTION SYSTEM OPERATOR SYSTEM OPERATION



PV Generation Curtailment Report

Date of Curtailment:	23/04/2025
Start of Curtailment	8:45
End of Curtailment	17:30
Instruction from TSOC	YES
Reason of Curtailment:	RES-E Generation Restriction due to low loading of the electrical system
Total Estimated Energy of the day:	1823.2 MWh
Total Estimated Curtailed Energy:	1082.4 MWh
Percentage of Curtailed Energy:	59.4%

Scada PVs Generation on 23/04/2025 (curtailment time: 08:45 - 17:30)



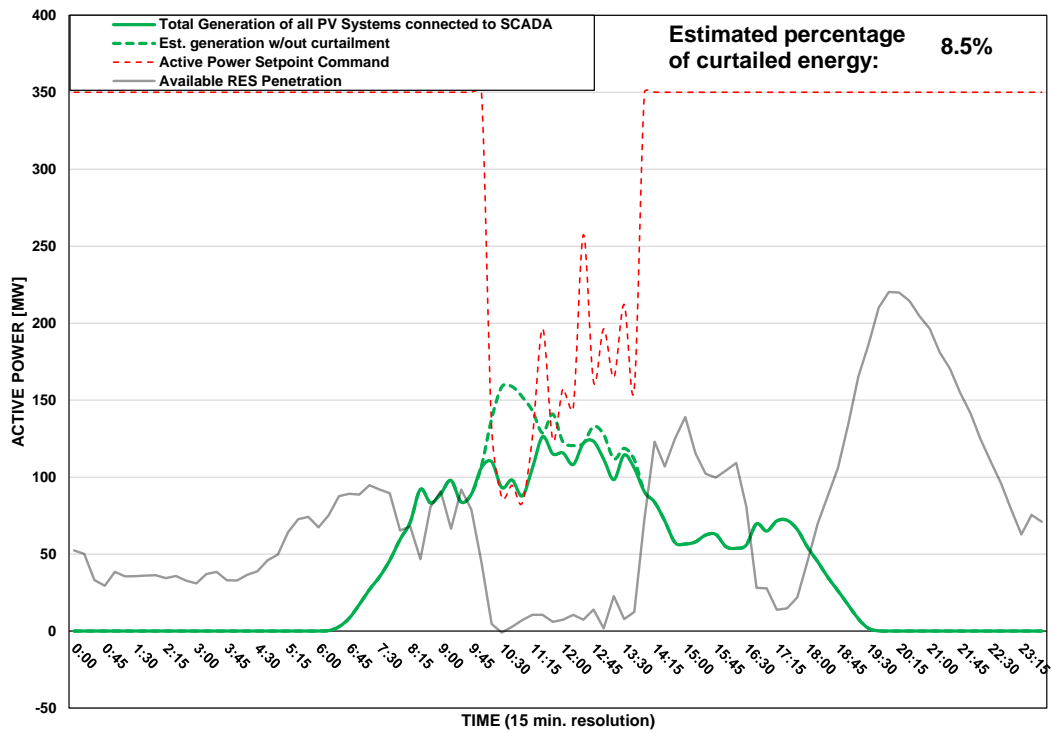
DISTRIBUTION SYSTEM OPERATOR SYSTEM OPERATION



PV Generation Curtailment Report

Date of Curtailment:	24/04/2025
Start of Curtailment	10:00
End of Curtailment	13:45
Instruction from TSOC	YES
Reason of Curtailment:	RES-E Generation Restriction due to low loading of the electrical system
Total Estimated Energy of the day:	1034.5 MWh
Total Estimated Curtailed Energy:	88.4 MWh
Percentage of Curtailed Energy:	8.5%

Scada PVs Generation on 24/04/2025 (curtailment time: 10:00 - 13:45)



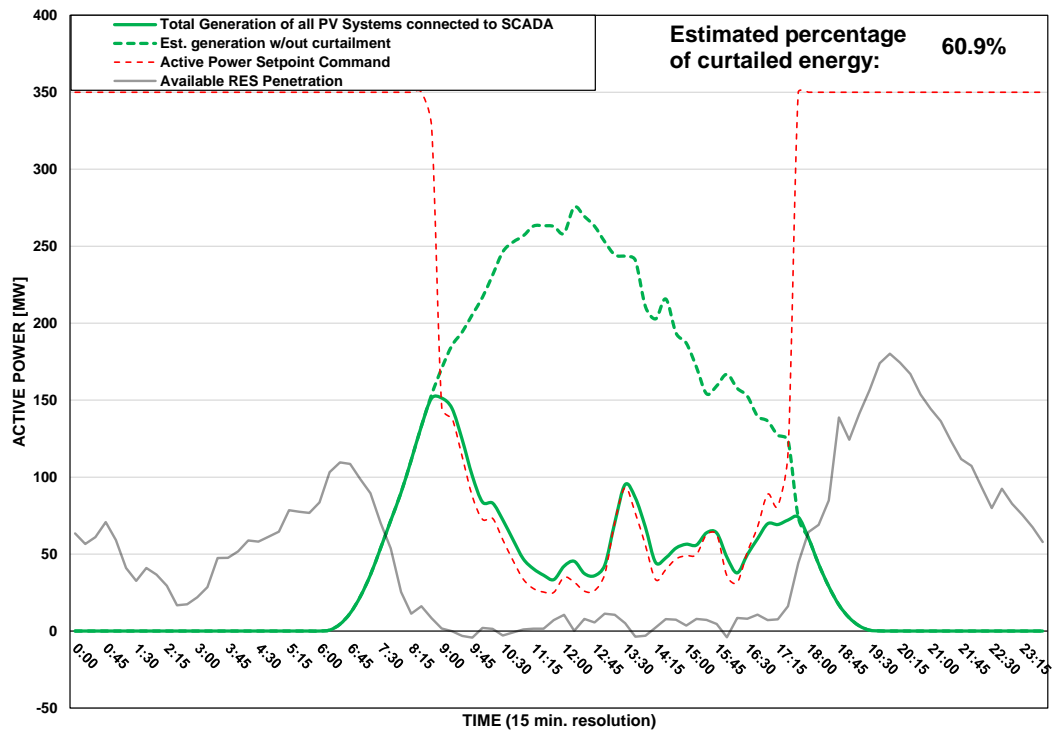
DISTRIBUTION SYSTEM OPERATOR SYSTEM OPERATION



PV Generation Curtailment Report

Date of Curtailment:	25/04/2025
Start of Curtailment	8:45
End of Curtailment	17:30
Instruction from TSOC	YES
Reason of Curtailment:	RES-E Generation Restriction due to low loading of the electrical system
Total Estimated Energy of the day:	2055.7 MWh
Total Estimated Curtailed Energy:	1251.5 MWh
Percentage of Curtailed Energy:	60.9%

Scada PVs Generation on 25/04/2025 (curtailment time: 08:45 - 17:30)



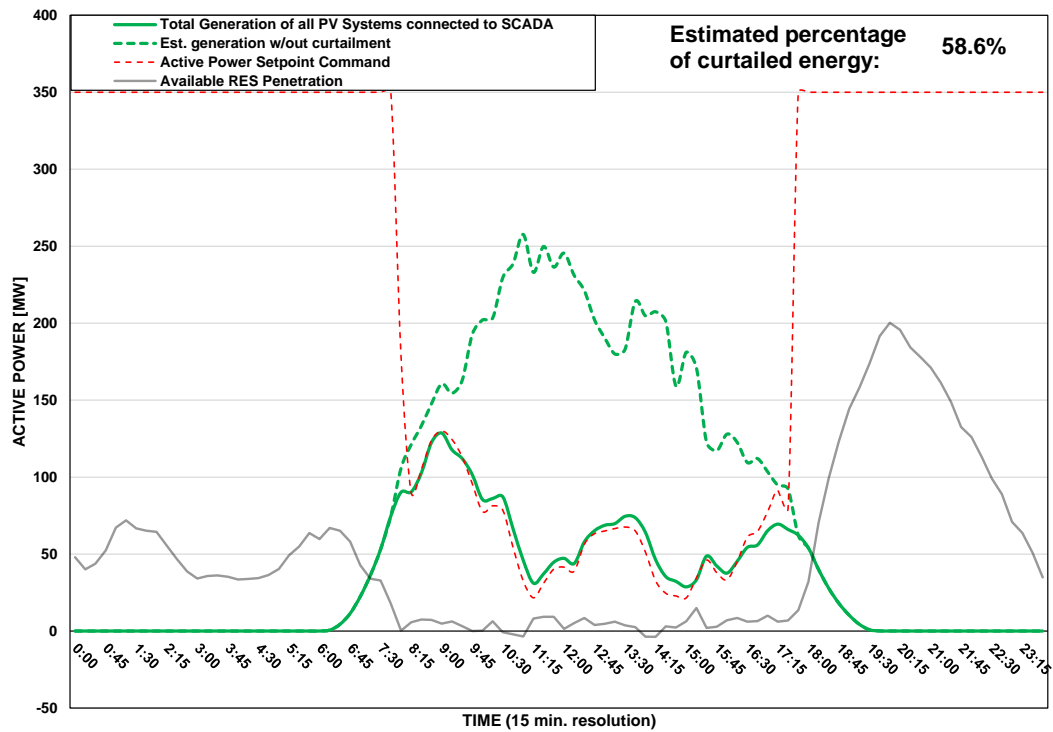
DISTRIBUTION SYSTEM OPERATOR SYSTEM OPERATION



PV Generation Curtailment Report

Date of Curtailment:	26/04/2025	Cut-off of PV Systems using RIPPLE:
Start of Curtailment	8:00	Cut-off areas using RIPPLE: NIC 2, PAF 1
End of Curtailment	17:30	
Instruction from TSOC	YES	Start of cut-off: 11:00 End of cut-off: 13:15
Reason of Curtailment:	RES-E Generation Restriction due to low loading of the electrical system	
Total Estimated Energy of the day:	1811.3 MWh	Total Est. Energy of the cut-off PV systems using RIPPLE: 39.8MWh
Total Estimated Curtailed Energy:	1061.9 MWh	
Percentage of Curtailed Energy:	58.6%	

Scada PVs Generation on 26/04/2025 (curtailment time: 08:00 - 17:30)



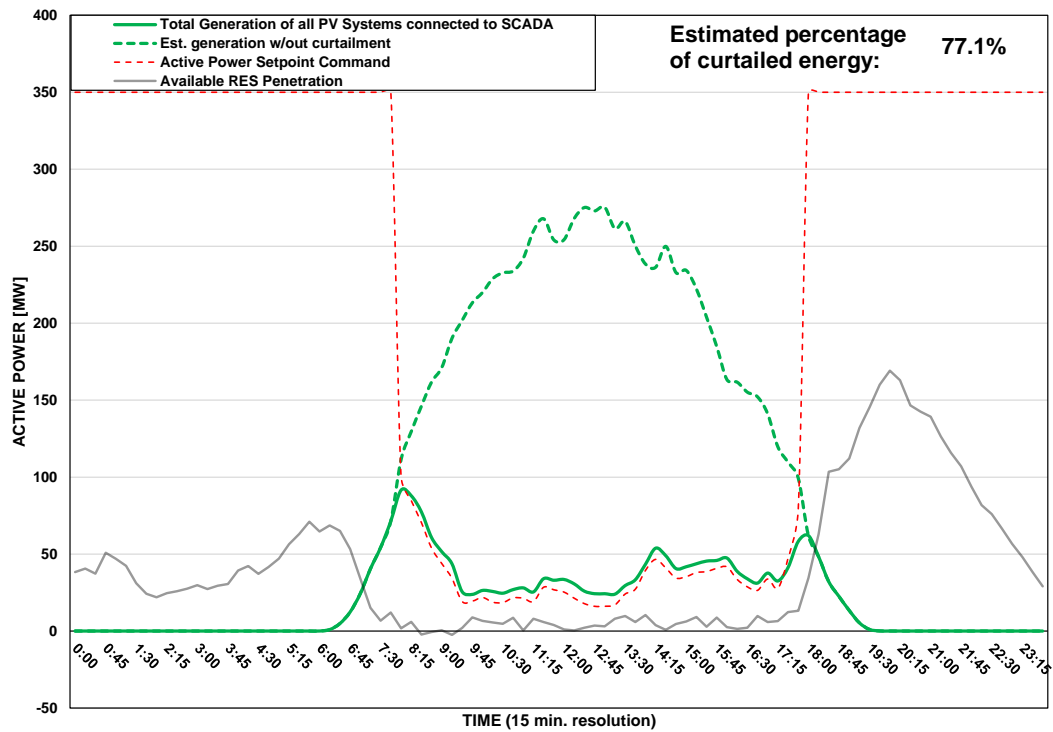
DISTRIBUTION SYSTEM OPERATOR SYSTEM OPERATION



PV Generation Curtailment Report

Date of Curtailment:	27/04/2025	Cut-off of PV Systems using RIPPLE and IoT:
Start of Curtailment	8:00	Cut-off areas using RIPPLE: NIC 2, LAR 1 Cut-off areas using IoT: PV-NIC4, PV-LCA/FAM3, PV-LIM3, PV-PAF3
End of Curtailment	17:45	
Instruction from TSOC	YES	Start of cut-off: 09:30 End of cut-off: 15:45
Reason of Curtailment:	RES-E Generation Restriction due to low loading of the electrical system	
Total Estimated Energy of the day:	2171.8 MWh	Total Est. Energy of the cut-off PV systems using RIPPLE: 146.8MWh
Total Estimated Curtailed Energy:	1674 MWh	Total Est. Energy of the cut-off PV systems using IoT: 142.2MWh
Percentage of Curtailed Energy:	77.1%	

Scada PVs Generation on 27/04/2025 (curtailment time: 08:00 - 17:45)



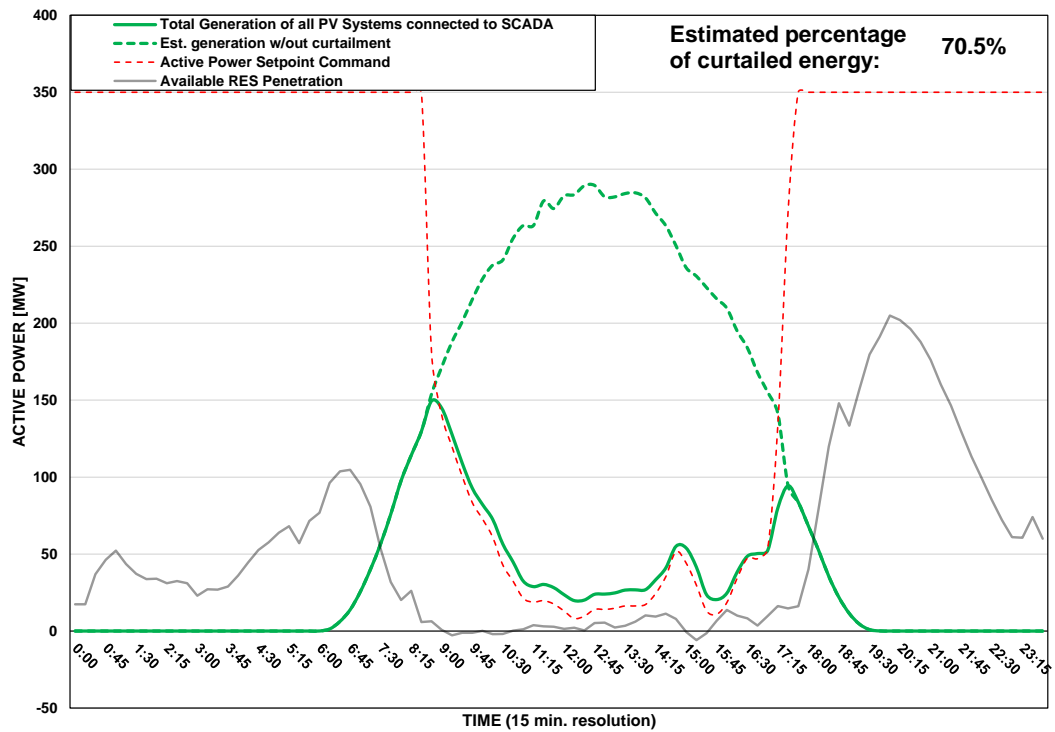
DISTRIBUTION SYSTEM OPERATOR SYSTEM OPERATION



PV Generation Curtailment Report

Date of Curtailment:	28/04/2025	Cut-off of PV Systems using RIPPLE and IoT:
Start of Curtailment	8:45	Cut-off areas using RIPPLE: LIM 1 Cut-off areas using IoT: PV-LCA/FAM1
End of Curtailment	17:15	
Instruction from TSOC	YES	Start of cut-off: 11:15 End of cut-off: 16:30
Reason of Curtailment:	RES-E Generation Restriction due to low loading of the electrical system	
Total Estimated Energy of the day:	2302.8 MWh	Total Est. Energy of the cut-off PV systems using RIPPLE: 72MWh
Total Estimated Curtailed Energy:	1624.1 MWh	Total Est. Energy of the cut-off PV systems using IoT: 61.1MWh
Percentage of Curtailed Energy:	70.5%	

Scada PVs Generation on 28/04/2025 (curtailment time: 08:45 - 17:15)



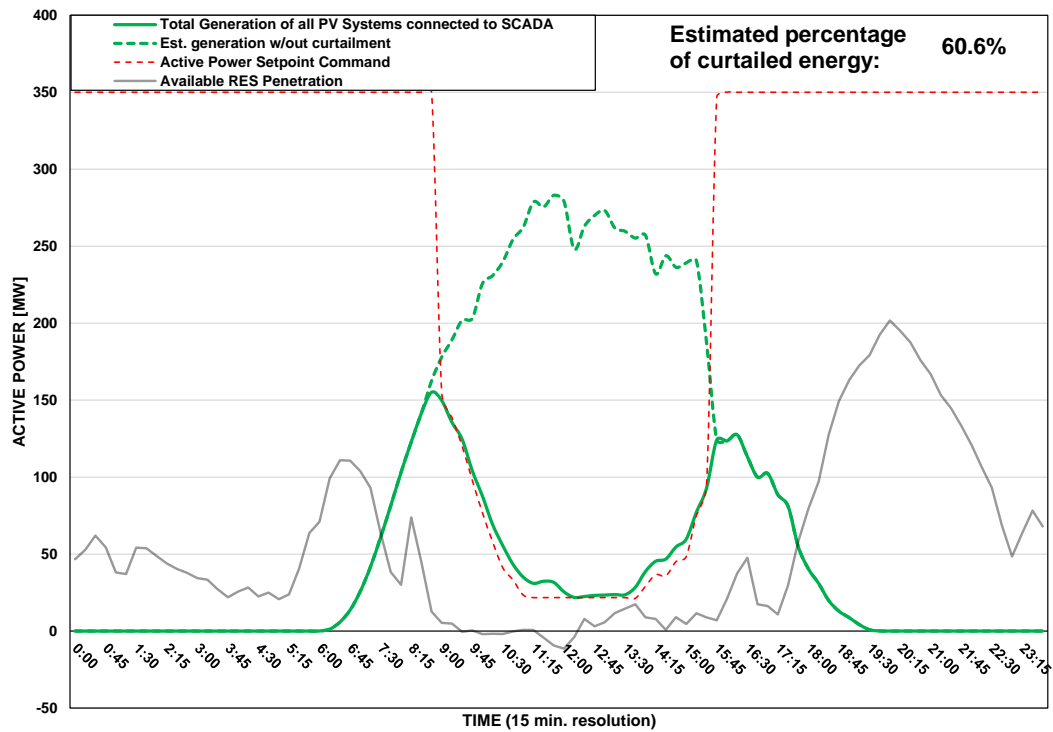
DISTRIBUTION SYSTEM OPERATOR SYSTEM OPERATION



PV Generation Curtailment Report

Date of Curtailment:	29/04/2025	Cut-off of PV Systems using RIPPLE:
Start of Curtailment	8:45	Cut-off areas using RIPPLE: PAF 1
End of Curtailment	15:30	
Instruction from TSOC	YES	Start of cut-off: 12:00 End of cut-off: 13:30
Reason of Curtailment:	RES-E Generation Restriction due to low loading of the electrical system	
Total Estimated Energy of the day:	2091.1 MWh	Total Est. Energy of the cut-off PV systems using RIPPLE: 24.7MWh
Total Estimated Curtailed Energy:	1267.5 MWh	
Percentage of Curtailed Energy:	60.6%	

Scada PVs Generation on 29/04/2025 (curtailment time: 08:45 - 15:30)



DISTRIBUTION SYSTEM OPERATOR SYSTEM OPERATION



PV Generation Curtailment Report

Date of Curtailment:	30/04/2025
Start of Curtailment	10:15
End of Curtailment	17:00
Instruction from TSOC	YES
Reason of Curtailment:	RES-E Generation Restriction due to low loading of the electrical system
Total Estimated Energy of the day:	1616.7 MWh
Total Estimated Curtailed Energy:	610.9 MWh
Percentage of Curtailed Energy:	37.8%

Scada PVs Generation on 30/04/2025 (curtailment time: 10:15 - 17:00)

