

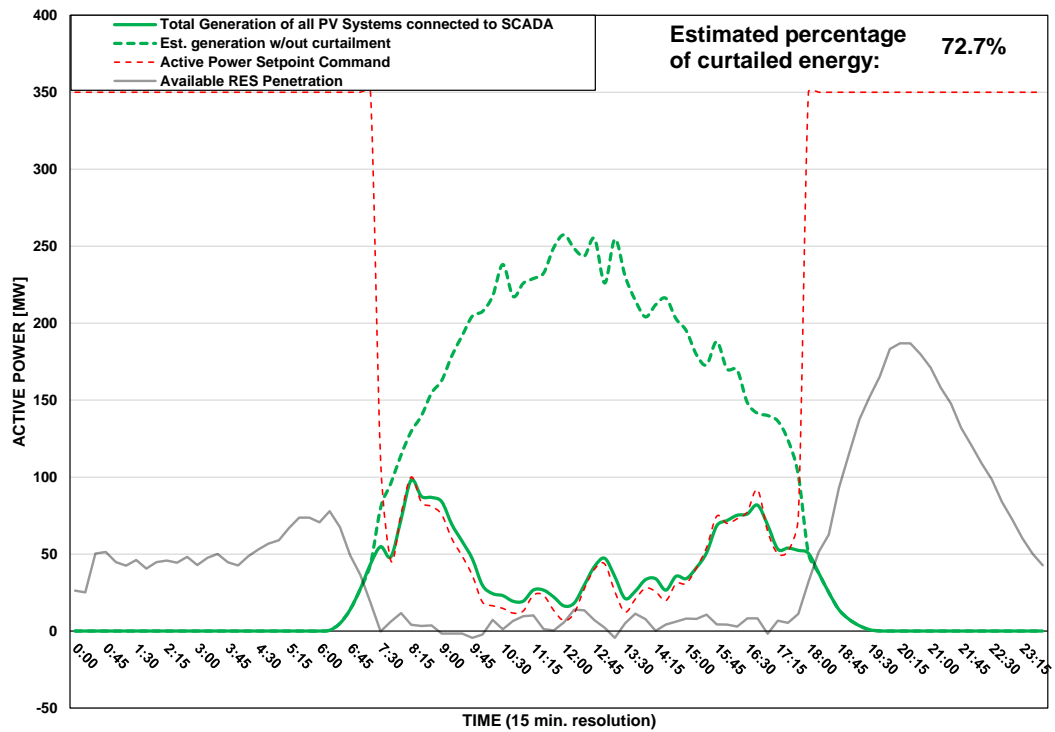
DISTRIBUTION SYSTEM OPERATOR SYSTEM OPERATION



PV Generation Curtailment Report

Date of Curtailment:	01/05/2025	Cut-off of PV Systems using RIPPLE and IoT:
Start of Curtailment	7:30	Cut-off areas using RIPPLE: NIC 2, LAR 2, LIM 2, PAF 2 Cut-off areas using IoT: PV-LIM3, PV-PAF3
End of Curtailment	17:45	
Instruction from TSOC	YES	Start of cut-off: 10:00 End of cut-off: 16:45
Reason of Curtailment:	RES-E Generation Restriction due to low loading of the electrical system	
Total Estimated Energy of the day:	2033.4 MWh	Total Est. Energy of the cut-off PV systems using RIPPLE: 276.6MWh
Total Estimated Curtailed Energy:	1478.1 MWh	Total Est. Energy of the cut-off PV systems using IoT: 65MWh
Percentage of Curtailed Energy:	72.7%	

Scada PVs Generation on 01/05/2025 (curtailment time: 07:30 - 17:45)



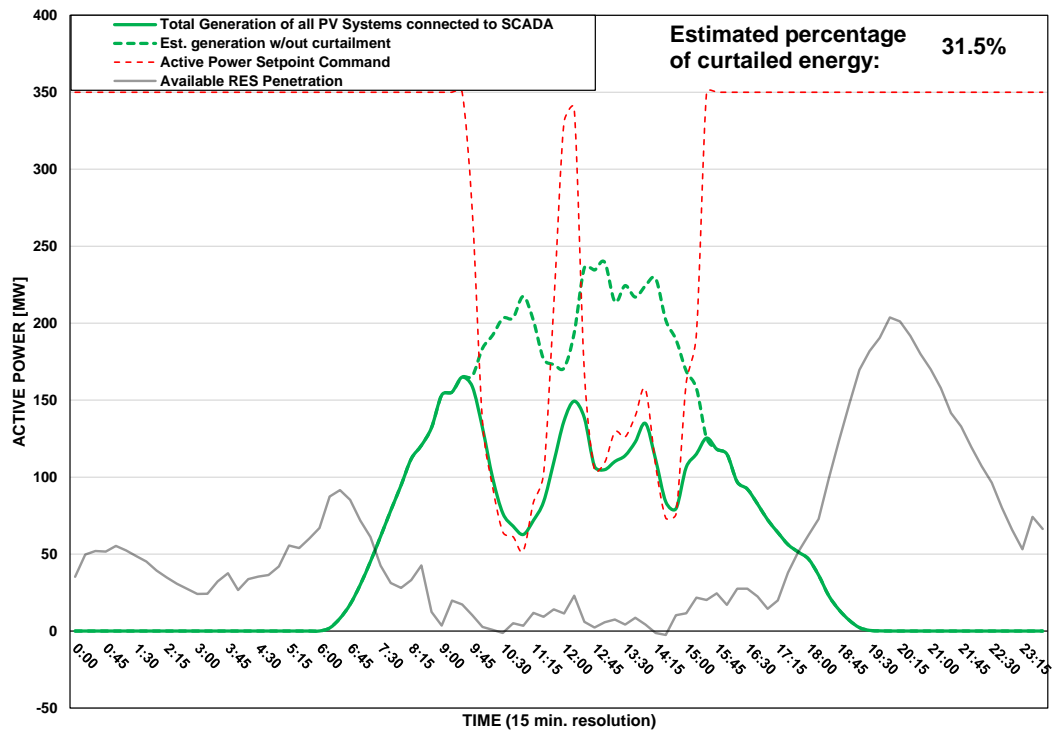
DISTRIBUTION SYSTEM OPERATOR SYSTEM OPERATION



PV Generation Curtailment Report

Date of Curtailment:	02/05/2025
Start of Curtailment	9:45
End of Curtailment	15:15
Instruction from TSOC	YES
Reason of Curtailment:	RES-E Generation Restriction due to low loading of the electrical system
Total Estimated Energy of the day:	1699.6 MWh
Total Estimated Curtailed Energy:	535.2 MWh
Percentage of Curtailed Energy:	31.5%

Scada PVs Generation on 02/05/2025 (curtailment time: 09:45 - 15:15)



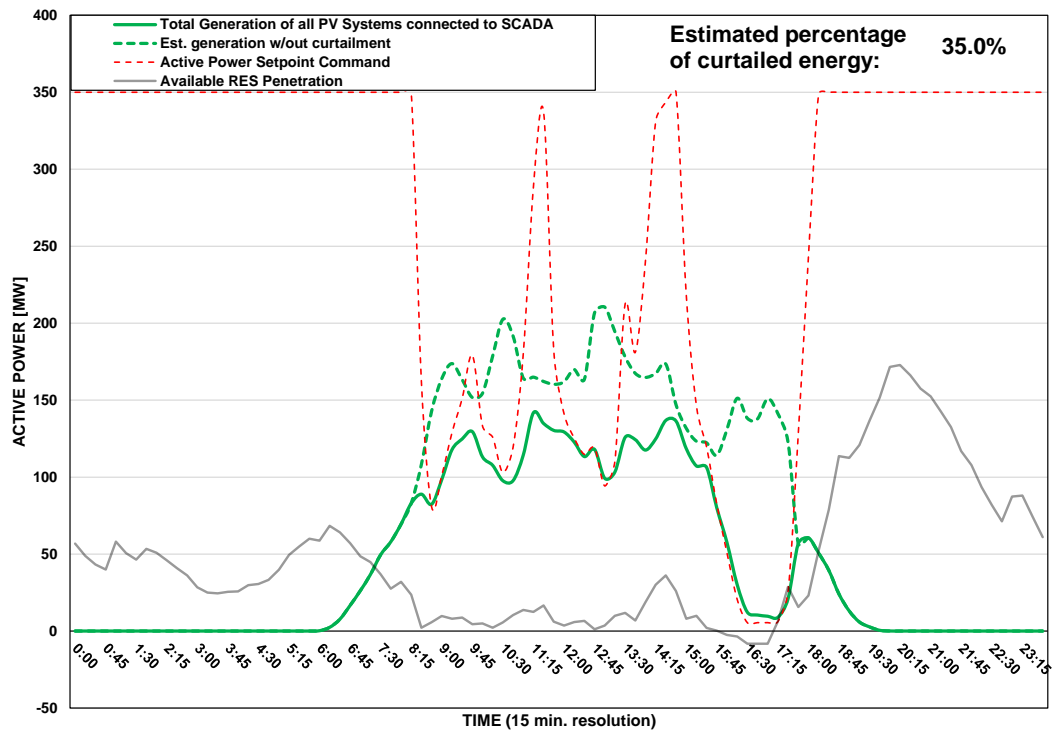
DISTRIBUTION SYSTEM OPERATOR SYSTEM OPERATION



PV Generation Curtailment Report

Date of Curtailment:	03/05/2025	Cut-off of PV Systems using RIPPLE:
Start of Curtailment	8:30	Cut-off areas using RIPPLE: NIC 1, NIC 2, NIC 3, LAR 1, LAR 2
End of Curtailment	17:30	
Instruction from TSOC	YES	Start of cut-off: 16:15 End of cut-off: 17:45
Reason of Curtailment:	RES-E Generation Restriction due to low loading of the electrical system	
Total Estimated Energy of the day:	1614.3 MWh	Total Est. Energy of the cut-off PV systems using RIPPLE: 64.2MWh
Total Estimated Curtailed Energy:	564.8 MWh	
Percentage of Curtailed Energy:	35.0%	

Scada PVs Generation on 03/05/2025 (curtailment time: 08:30 - 17:30)



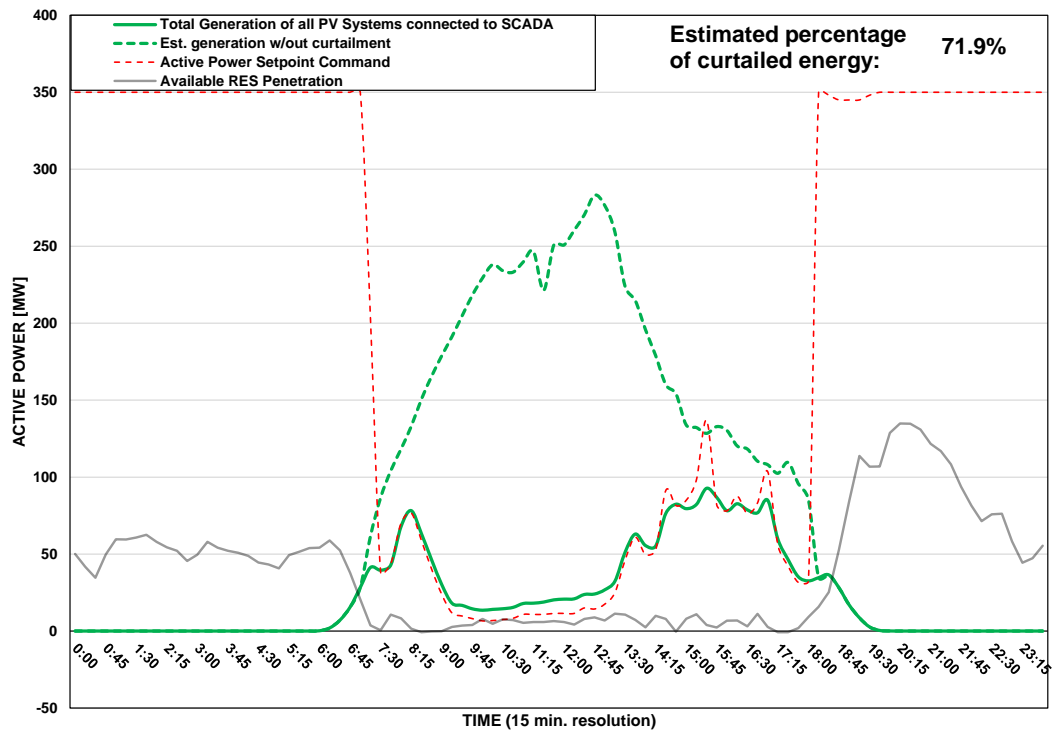
DISTRIBUTION SYSTEM OPERATOR SYSTEM OPERATION



PV Generation Curtailment Report

Date of Curtailment:	04/05/2025	Cut-off of PV Systems using RIPPLE and IoT:
Start of Curtailment	7:15	Cut-off areas using RIPPLE: NIC 1, LIM 1, LIM 2, PAF 1 Cut-off areas using IoT: PV-NIC1, PV-LCA/FAM1, PV-LCA/FAM3, PV-LIM3
End of Curtailment	18:00	
Instruction from TSOC	YES	Start of cut-off: 09:00 End of cut-off: 14:30
Reason of Curtailment:	RES-E Generation Restriction due to low loading of the electrical system	
Total Estimated Energy of the day:	1980.9 MWh	Total Est. Energy of the cut-off PV systems using RIPPLE: 211.3MWh
Total Estimated Curtailed Energy:	1425.1 MWh	Total Est. Energy of the cut-off PV systems using IoT: 123.3MWh
Percentage of Curtailed Energy:	71.9%	

Scada PVs Generation on 04/05/2025 (curtailment time: 07:15 - 18:00)



DISTRIBUTION SYSTEM OPERATOR SYSTEM OPERATION

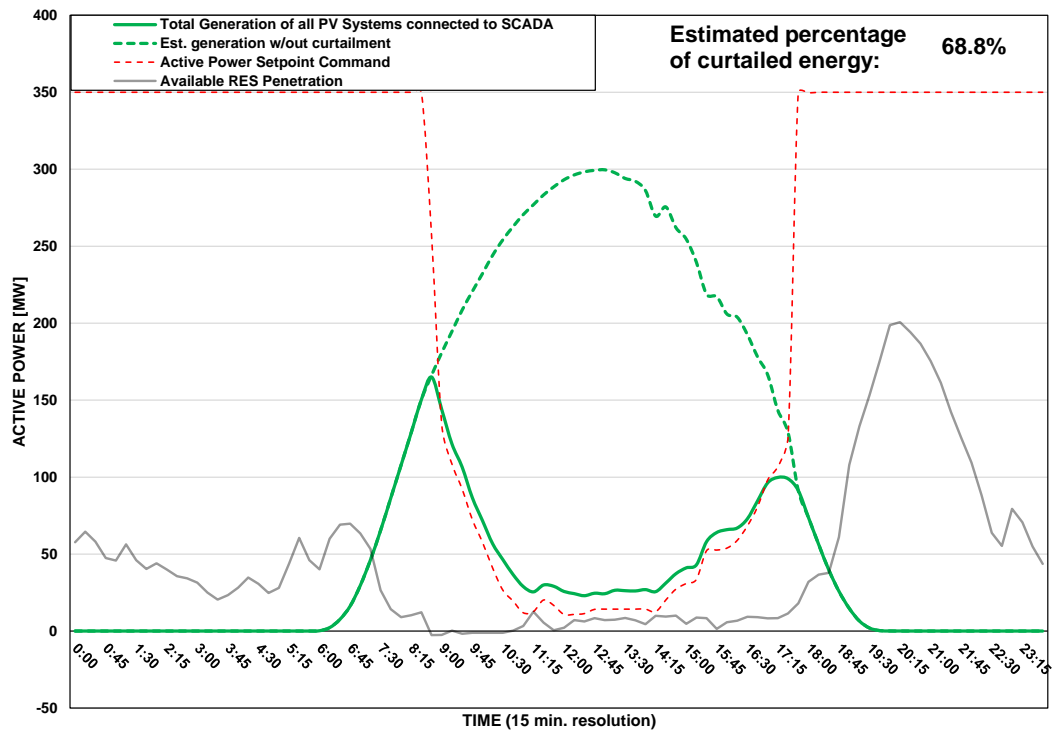


Αρχή Ηλεκτρισμού Κύπρου
Διανομή

PV Generation Curtailment Report

Date of Curtailment:	05/05/2025	Cut-off of PV Systems using RIPPLE and IoT:
Start of Curtailment	8:45	Cut-off areas using RIPPLE: LAR 1, PAF 2 Cut-off areas using IoT: PV-LIM1
End of Curtailment	17:30	
Instruction from TSOC	YES	Start of cut-off: 10:45 End of cut-off: 17:30
Reason of Curtailment:	RES-E Generation Restriction due to low loading of the electrical system	
Total Estimated Energy of the day:	2412.5 MWh	Total Est. Energy of the cut-off PV systems using RIPPLE: 152.5MWh
Total Estimated Curtailed Energy:	1658.9 MWh	Total Est. Energy of the cut-off PV systems using IoT: 75.3MWh
Percentage of Curtailed Energy:	68.8%	

Scada PVs Generation on 05/05/2025 (curtailment time: 08:45 - 17:30)



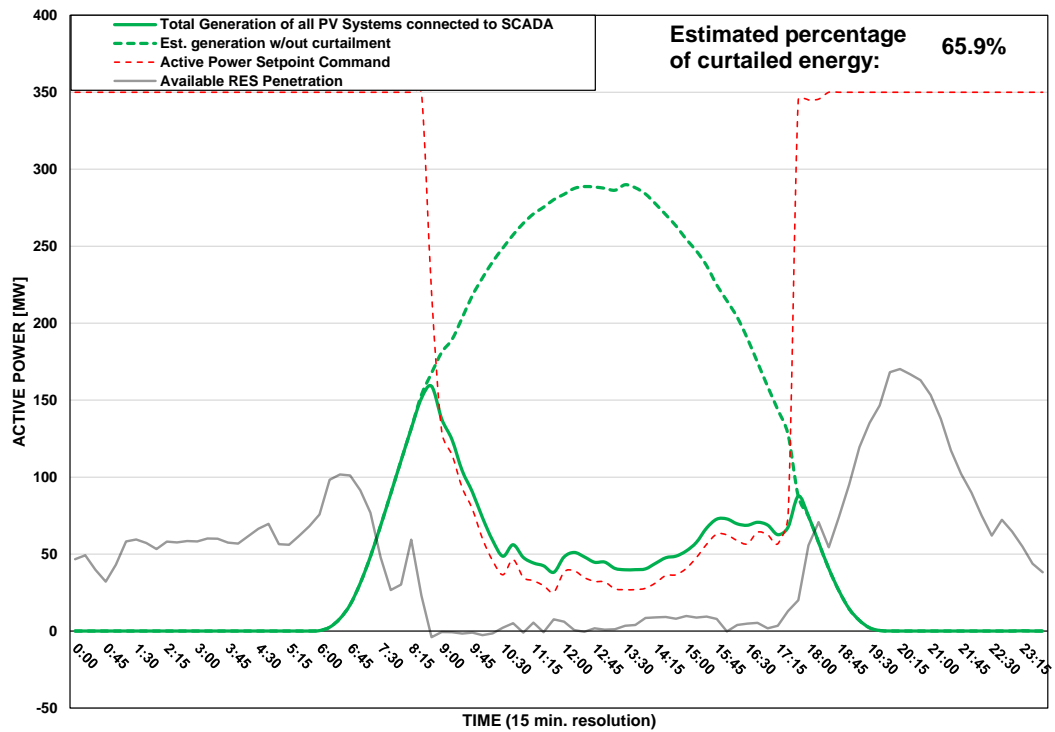
DISTRIBUTION SYSTEM OPERATOR SYSTEM OPERATION



PV Generation Curtailment Report

Date of Curtailment:	06/05/2025	Cut-off of PV Systems using RIPPLE and IoT:
Start of Curtailment	8:30	Cut-off areas using RIPPLE: NIC 1, NIC 3, LIM 2 Cut-off areas using IoT: PV-LIM3
End of Curtailment	17:30	
Instruction from TSOC	YES	Start of cut-off: 10:30 End of cut-off: 16:30
Reason of Curtailment:	RES-E Generation Restriction due to low loading of the electrical system	
Total Estimated Energy of the day:	2392.7 MWh	Total Est. Energy of the cut-off PV systems using RIPPLE: 327.4MWh
Total Estimated Curtailed Energy:	1576.8 MWh	Total Est. Energy of the cut-off PV systems using IoT: 10.5MWh
Percentage of Curtailed Energy:	65.9%	

Scada PVs Generation on 06/05/2025 (curtailment time: 08:30 - 17:30)



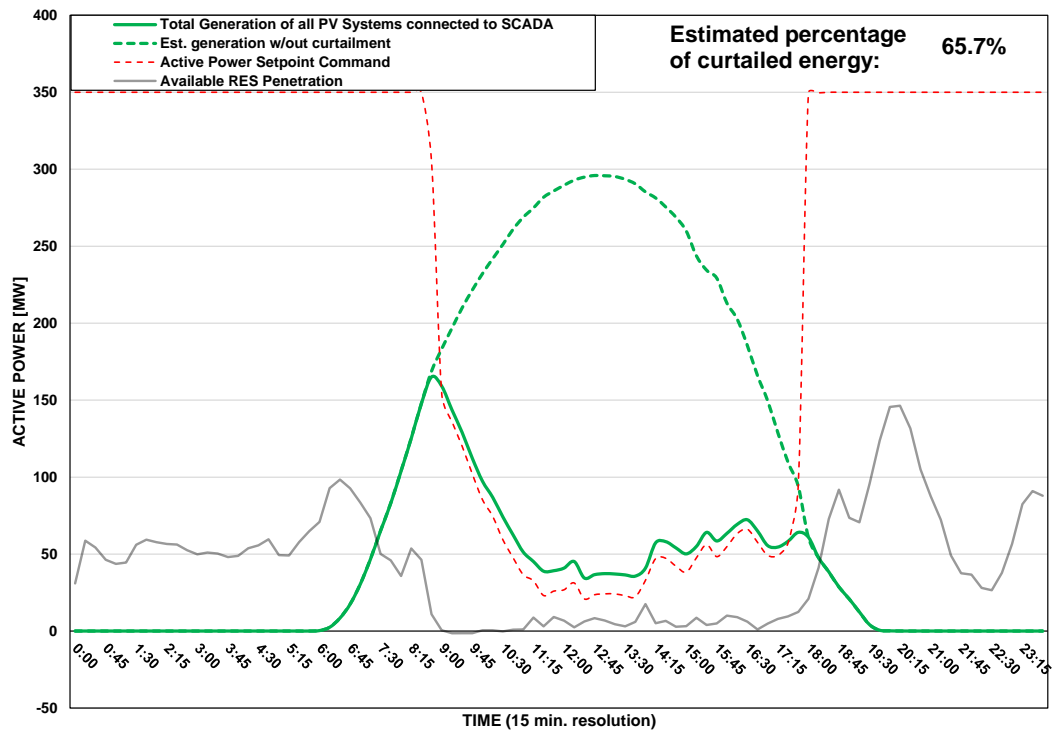
DISTRIBUTION SYSTEM OPERATOR SYSTEM OPERATION



PV Generation Curtailment Report

Date of Curtailment:	07/05/2025	Cut-off of PV Systems using RIPPLE and IoT:
Start of Curtailment	8:45	Cut-off areas using RIPPLE: LAR 1, LAR 2, LIM 1, PAF 1, PAF 2 Cut-off areas using IoT: PV-LCA/FAM1, PV-PAF3
End of Curtailment	17:45	
Instruction from TSOC	YES	Start of cut-off: 11:00 End of cut-off: 17:00
Reason of Curtailment:	RES-E Generation Restriction due to low loading of the electrical system	
Total Estimated Energy of the day:	2400 MWh	Total Est. Energy of the cut-off PV systems using RIPPLE: 417.5MWh
Total Estimated Curtailed Energy:	1576.2 MWh	Total Est. Energy of the cut-off PV systems using IoT: 137.1MWh
Percentage of Curtailed Energy:	65.7%	

Scada PVs Generation on 07/05/2025 (curtailment time: 08:45 - 17:45)



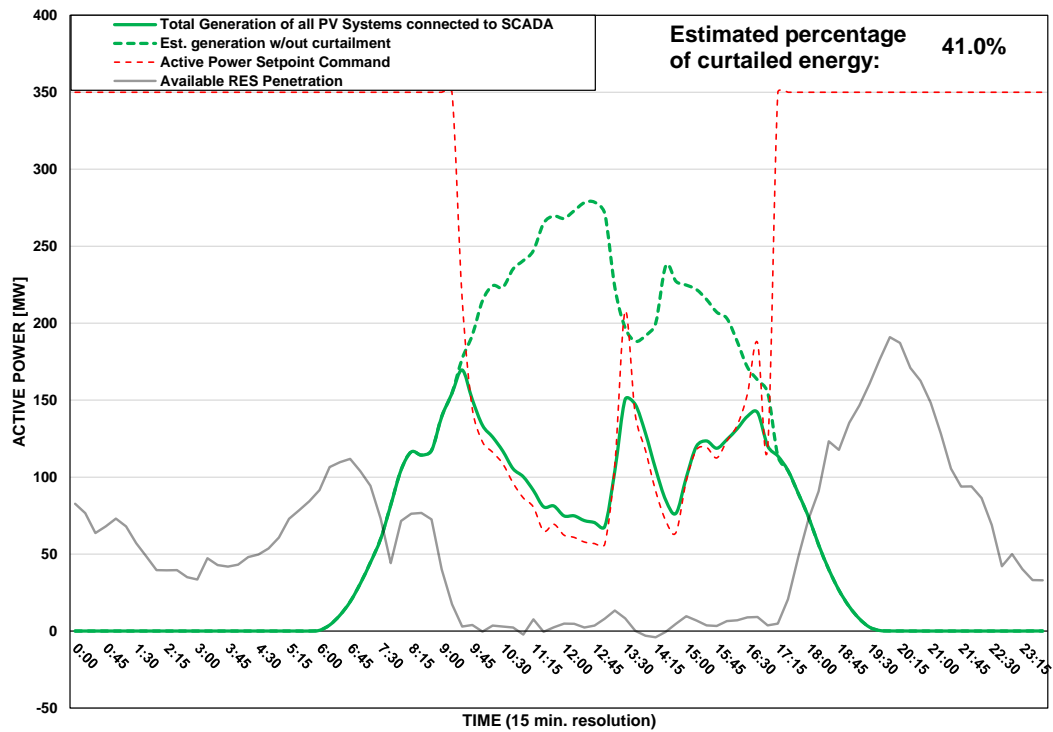
DISTRIBUTION SYSTEM OPERATOR SYSTEM OPERATION



PV Generation Curtailment Report

Date of Curtailment:	08/05/2025
Start of Curtailment	9:30
End of Curtailment	17:00
Instruction from TSOC	YES
Reason of Curtailment:	RES-E Generation Restriction due to low loading of the electrical system
Total Estimated Energy of the day:	2100.7 MWh
Total Estimated Curtailed Energy:	860.3 MWh
Percentage of Curtailed Energy:	41.0%

Scada PVs Generation on 08/05/2025 (curtailment time: 09:30 - 17:00)



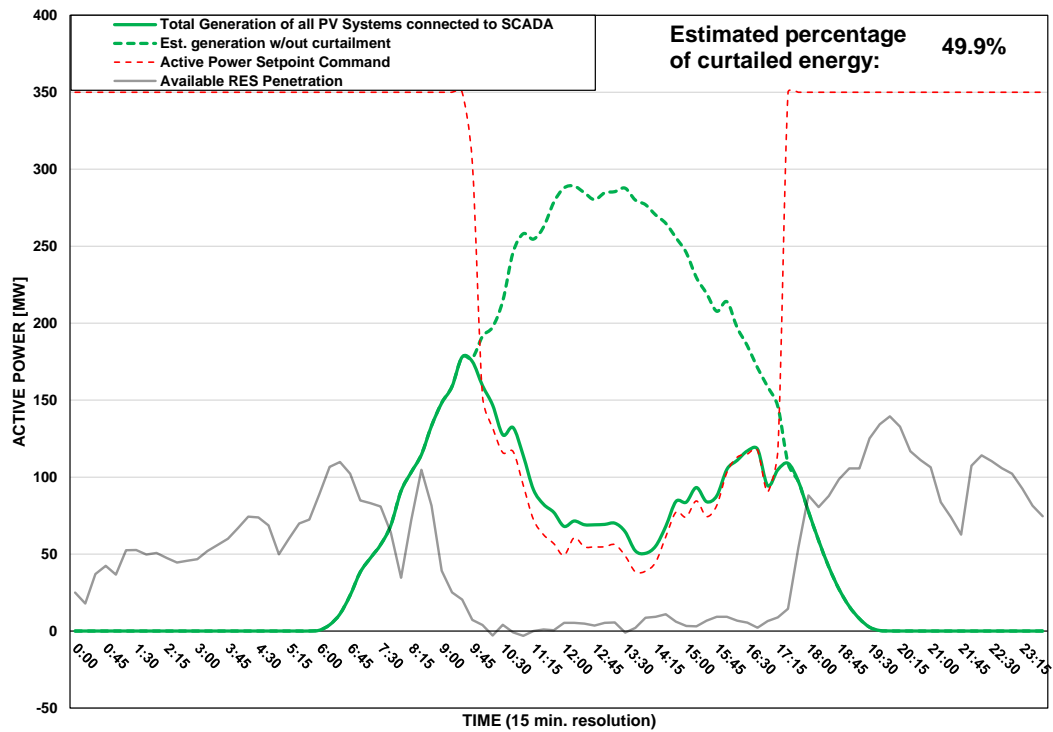
DISTRIBUTION SYSTEM OPERATOR SYSTEM OPERATION



PV Generation Curtailment Report

Date of Curtailment:	09/05/2025
Start of Curtailment	9:45
End of Curtailment	17:15
Instruction from TSOC	YES
Reason of Curtailment:	RES-E Generation Restriction due to low loading of the electrical system
Total Estimated Energy of the day:	2255 MWh
Total Estimated Curtailed Energy:	1126.4 MWh
Percentage of Curtailed Energy:	49.9%

Scada PVs Generation on 09/05/2025 (curtailment time: 09:45 - 17:15)



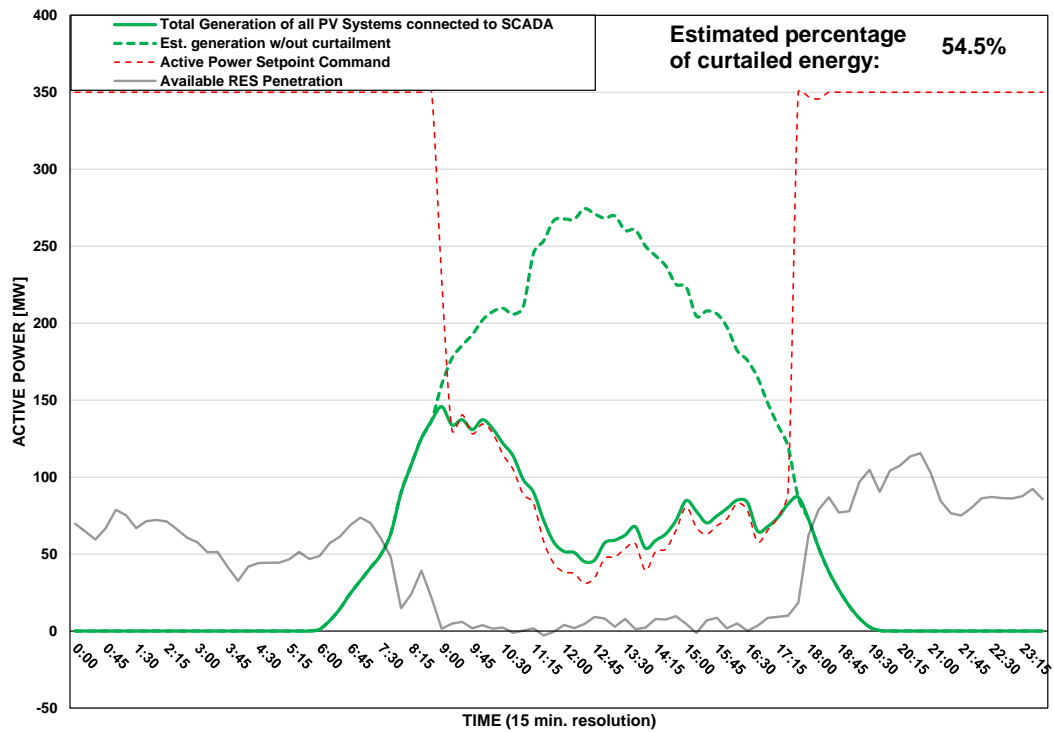
DISTRIBUTION SYSTEM OPERATOR SYSTEM OPERATION



PV Generation Curtailment Report

Date of Curtailment:	10/05/2025
Start of Curtailment	9:00
End of Curtailment	17:30
Instruction from TSOC	YES
Reason of Curtailment:	RES-E Generation Restriction due to low loading of the electrical system
Total Estimated Energy of the day:	2144.3 MWh
Total Estimated Curtailed Energy:	1168 MWh
Percentage of Curtailed Energy:	54.5%

Scada PVs Generation on 10/05/2025 (curtailment time: 09:00 - 17:30)



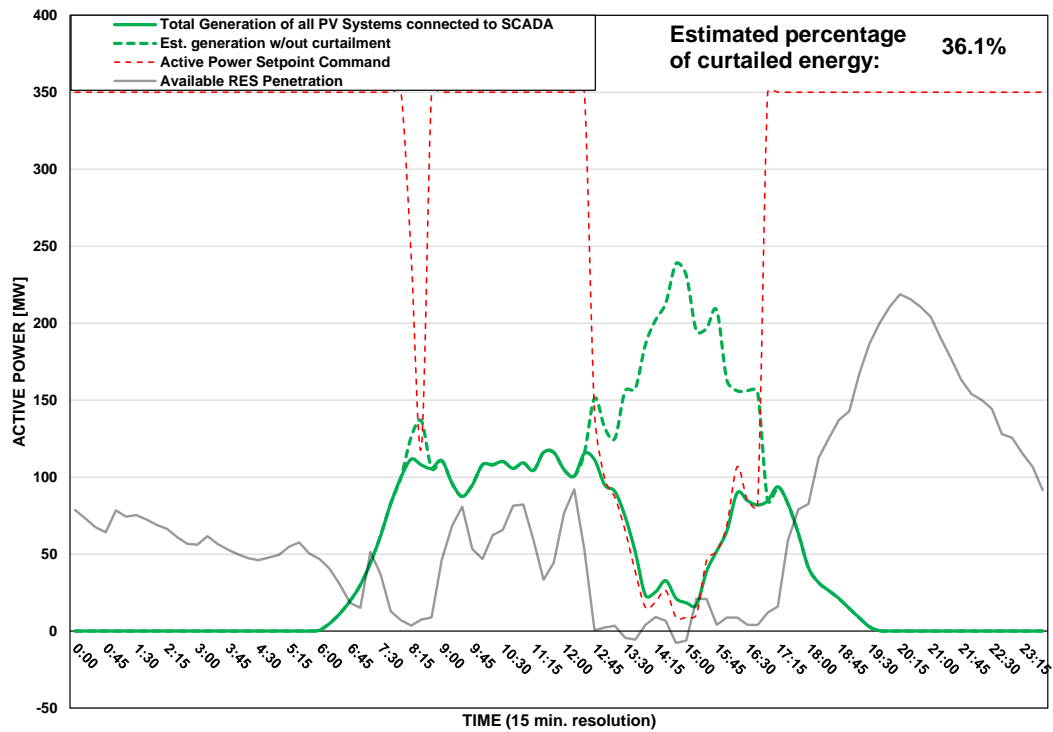
DISTRIBUTION SYSTEM OPERATOR SYSTEM OPERATION



PV Generation Curtailment Report

Date of Curtailment:	11/05/2025	Cut-off of PV Systems using RIPPLE and IoT:
Start of Curtailment	8:15	Cut-off areas using RIPPLE: NIC 3, LIM 2, PAF 2 Cut-off areas using IoT: PV-LIM1, PV-PAF3
End of Curtailment	16:45	
Instruction from TSOC	YES	Start of cut-off: 13:45 End of cut-off: 17:00
Reason of Curtailment:	RES-E Generation Restriction due to low loading of the electrical system	
Total Estimated Energy of the day:	1451.9 MWh	Total Est. Energy of the cut-off PV systems using RIPPLE: 130.6MWh
Total Estimated Curtailed Energy:	523.5 MWh	Total Est. Energy of the cut-off PV systems using IoT: 53.1MWh
Percentage of Curtailed Energy:	36.1%	

Scada PVs Generation on 11/05/2025 (curtailment time: 08:15 - 16:45)



DISTRIBUTION SYSTEM OPERATOR SYSTEM OPERATION

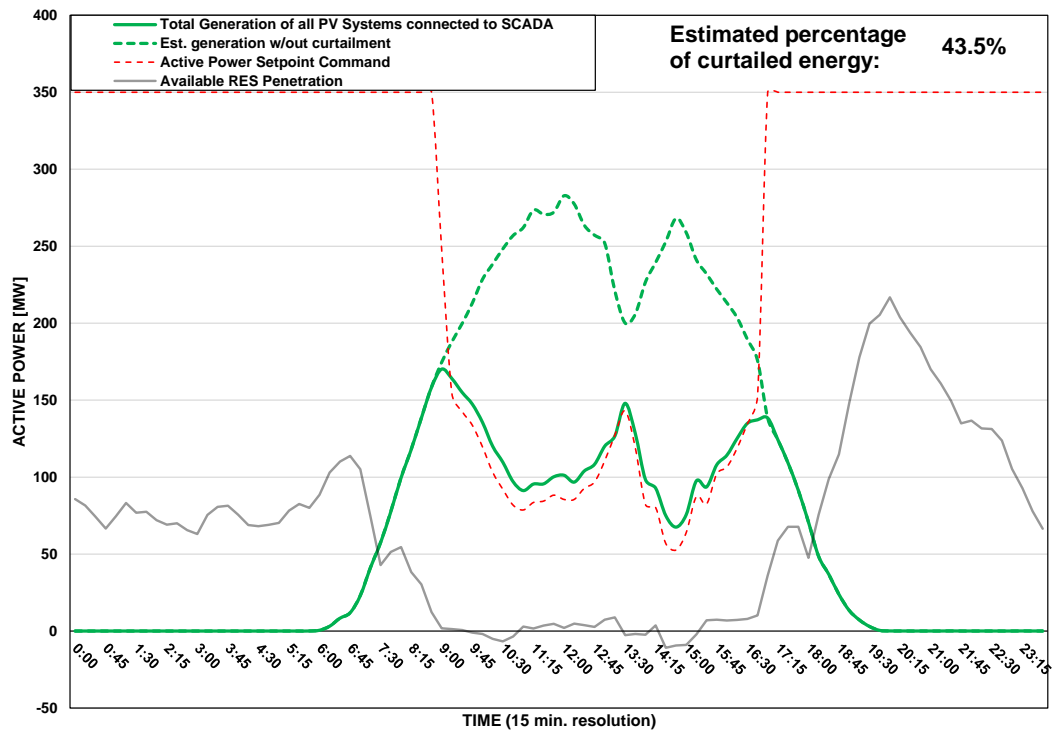


Αρχή Ηλεκτρισμού Κύπρου
Διανομή

PV Generation Curtailment Report

Date of Curtailment:	12/05/2025
Start of Curtailment	9:00
End of Curtailment	16:45
Instruction from TSOC	YES
Reason of Curtailment:	RES-E Generation Restriction due to low loading of the electrical system
Total Estimated Energy of the day:	2229.2 MWh
Total Estimated Curtailed Energy:	968.6 MWh
Percentage of Curtailed Energy:	43.5%

Scada PVs Generation on 12/05/2025 (curtailment time: 09:00 - 16:45)



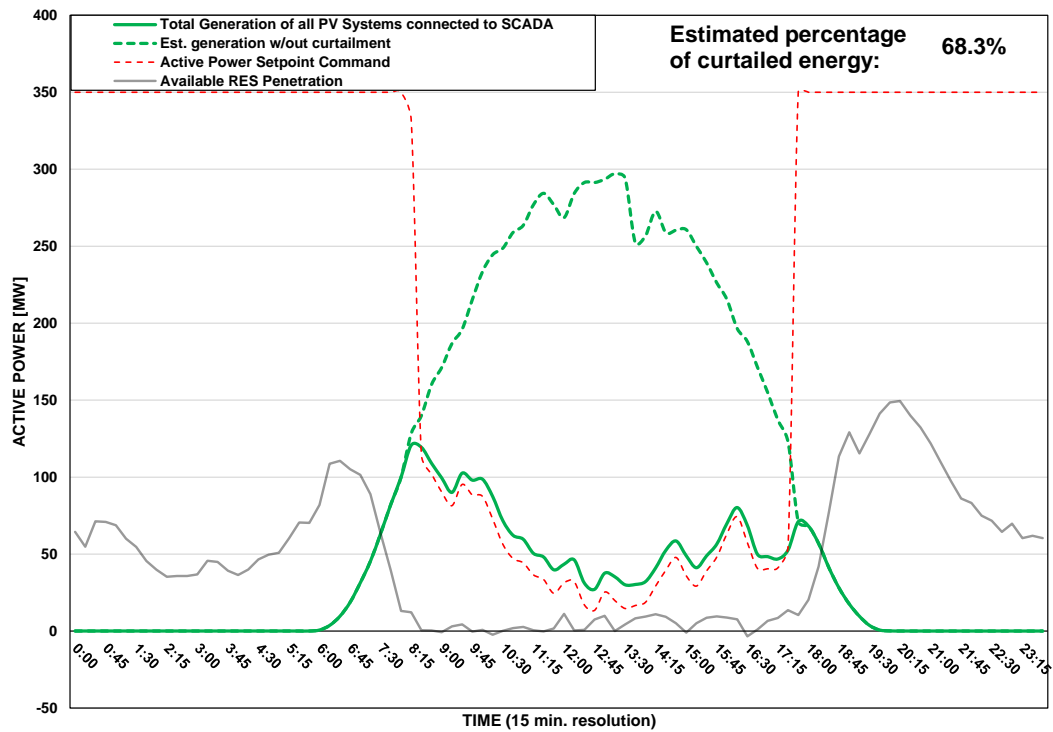
DISTRIBUTION SYSTEM OPERATOR SYSTEM OPERATION



PV Generation Curtailment Report

Date of Curtailment:	13/05/2025
Start of Curtailment	8:15
End of Curtailment	17:30
Instruction from TSOC	YES
Reason of Curtailment:	RES-E Generation Restriction due to low loading of the electrical system
Total Estimated Energy of the day:	2355.5 MWh
Total Estimated Curtailed Energy:	1608.6 MWh
Percentage of Curtailed Energy:	68.3%

Scada PVs Generation on 13/05/2025 (curtailment time: 08:15 - 17:30)



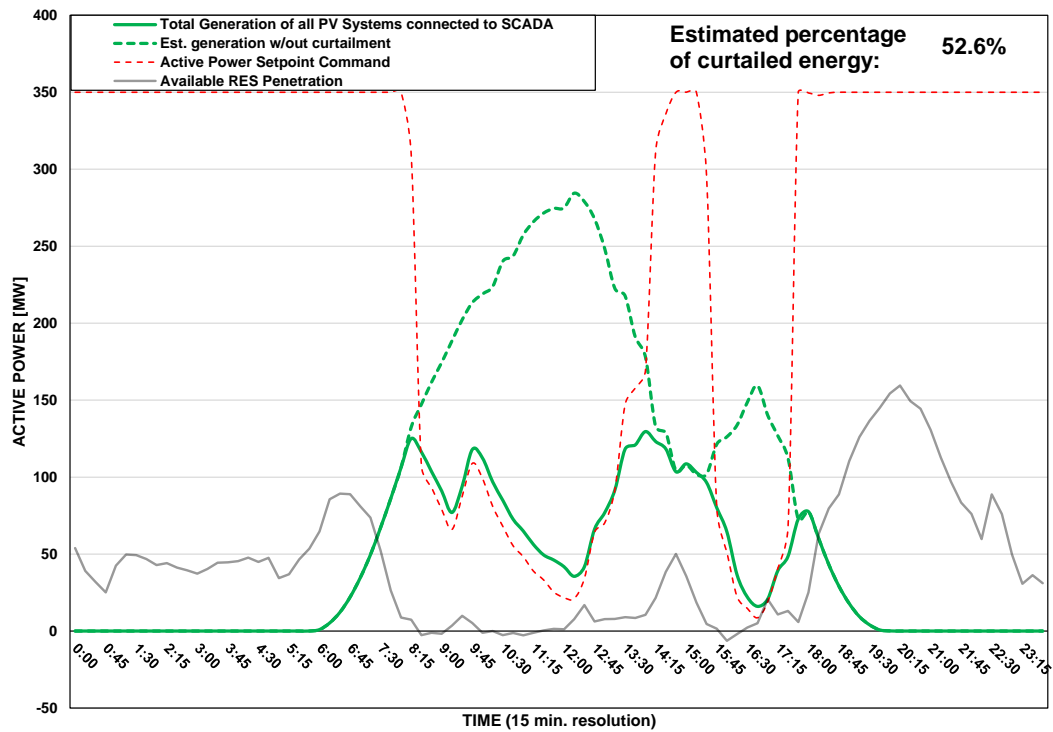
DISTRIBUTION SYSTEM OPERATOR SYSTEM OPERATION



PV Generation Curtailment Report

Date of Curtailment:	14/05/2025
Start of Curtailment	8:15
End of Curtailment	17:30
Instruction from TSOC	YES
Reason of Curtailment:	RES-E Generation Restriction due to low loading of the electrical system
Total Estimated Energy of the day:	1956.5 MWh
Total Estimated Curtailed Energy:	1028.5 MWh
Percentage of Curtailed Energy:	52.6%

Scada PVs Generation on 14/05/2025 (curtailment time: 08:15 - 17:30)



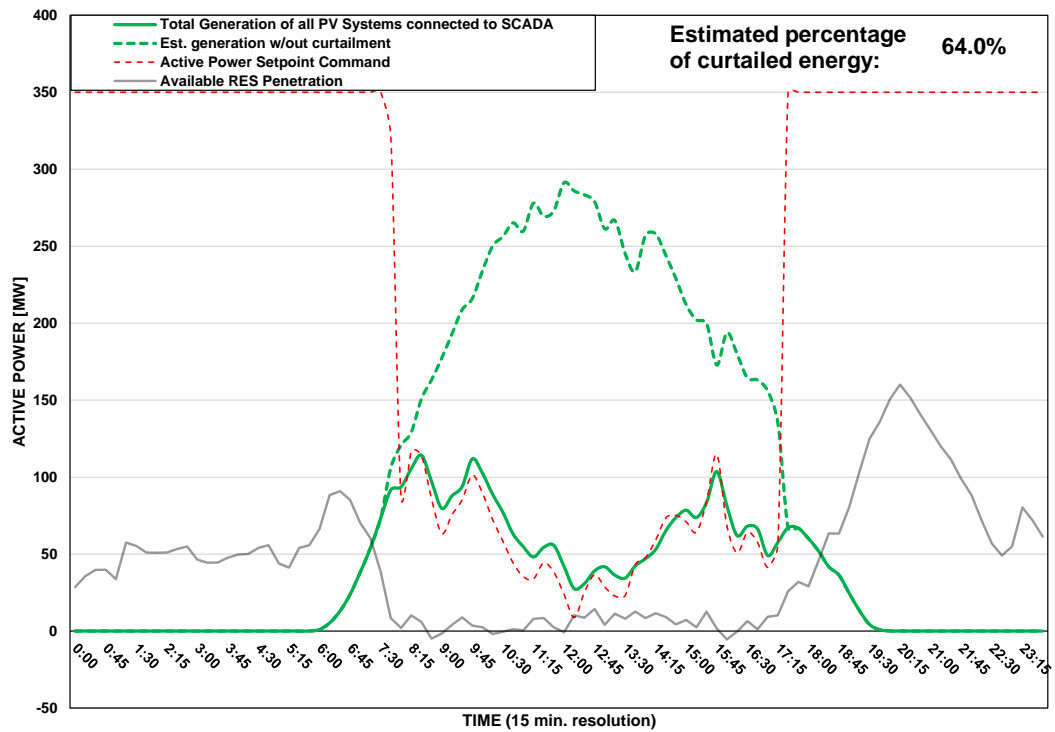
DISTRIBUTION SYSTEM OPERATOR SYSTEM OPERATION



PV Generation Curtailment Report

Date of Curtailment:	15/05/2025	Cut-off of PV Systems using IoT:
Start of Curtailment	7:45	Cut-off areas using IoT: PV-NIC2
End of Curtailment	17:15	
Instruction from TSOC	YES	Start of cut-off: 12:00 End of cut-off: 13:45
Reason of Curtailment:	RES-E Generation Restriction due to low loading of the electrical system	
Total Estimated Energy of the day:	2260.2 MWh	
Total Estimated Curtailed Energy:	1446.8 MWh	Total Est. Energy of the cut-off PV systems using IoT: 18.4MWh
Percentage of Curtailed Energy:	64.0%	

Scada PVs Generation on 15/05/2025 (curtailment time: 07:45 - 17:15)



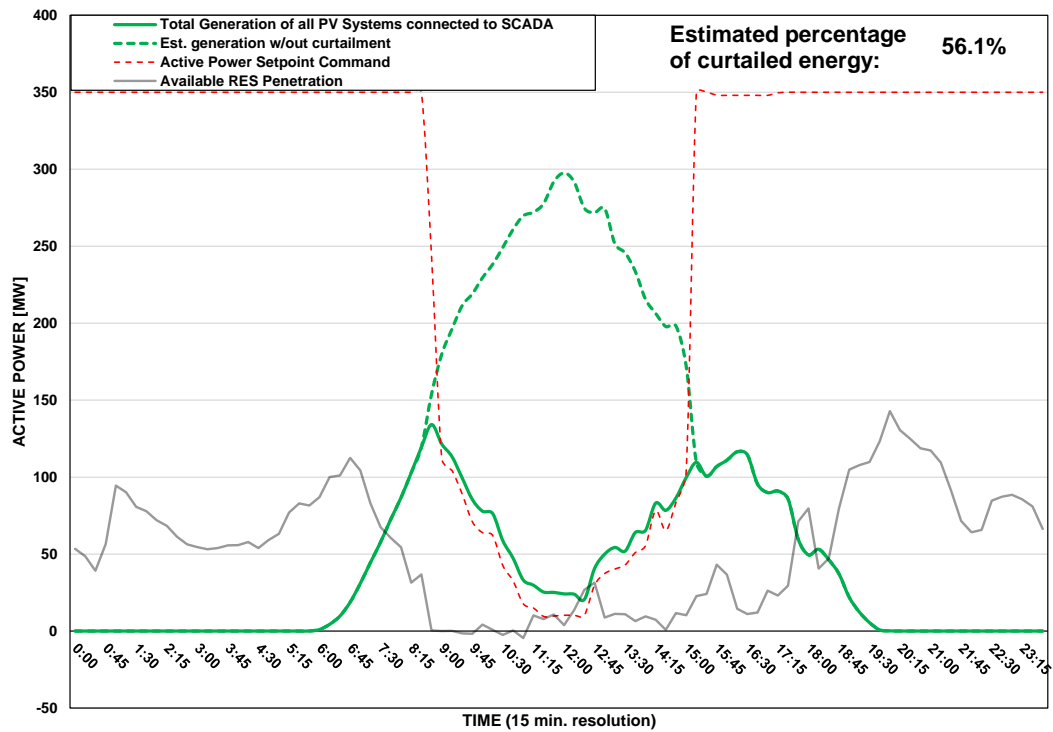
DISTRIBUTION SYSTEM OPERATOR SYSTEM OPERATION



PV Generation Curtailment Report

Date of Curtailment:	16/05/2025	Cut-off of PV Systems using IoT:
Start of Curtailment	8:45	Cut-off areas using IoT: PV-LIM1, PV-LIM3
End of Curtailment	15:00	
Instruction from TSOC	YES	Start of cut-off: 11:00 End of cut-off: 13:15
Reason of Curtailment:	RES-E Generation Restriction due to low loading of the electrical system	
Total Estimated Energy of the day:	2009.6 MWh	
Total Estimated Curtailed Energy:	1127.7 MWh	Total Est. Energy of the cut-off PV systems using IoT: 39.1MWh
Percentage of Curtailed Energy:	56.1%	

Scada PVs Generation on 16/05/2025 (curtailment time: 08:45 - 15:00)



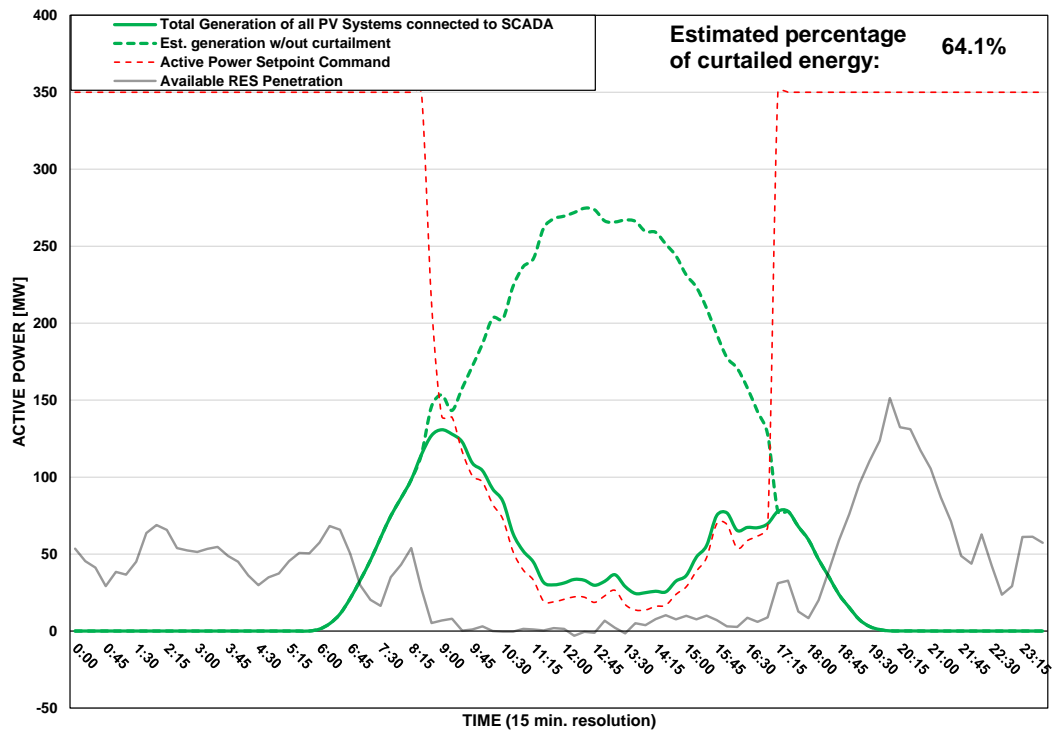
DISTRIBUTION SYSTEM OPERATOR SYSTEM OPERATION



PV Generation Curtailment Report

Date of Curtailment:	17/05/2025
Start of Curtailment	8:45
End of Curtailment	17:00
Instruction from TSOC	YES
Reason of Curtailment:	RES-E Generation Restriction due to low loading of the electrical system
Total Estimated Energy of the day:	2092.2 MWh
Total Estimated Curtailed Energy:	1340.1 MWh
Percentage of Curtailed Energy:	64.1%

Scada PVs Generation on 17/05/2025 (curtailment time: 08:45 - 17:00)



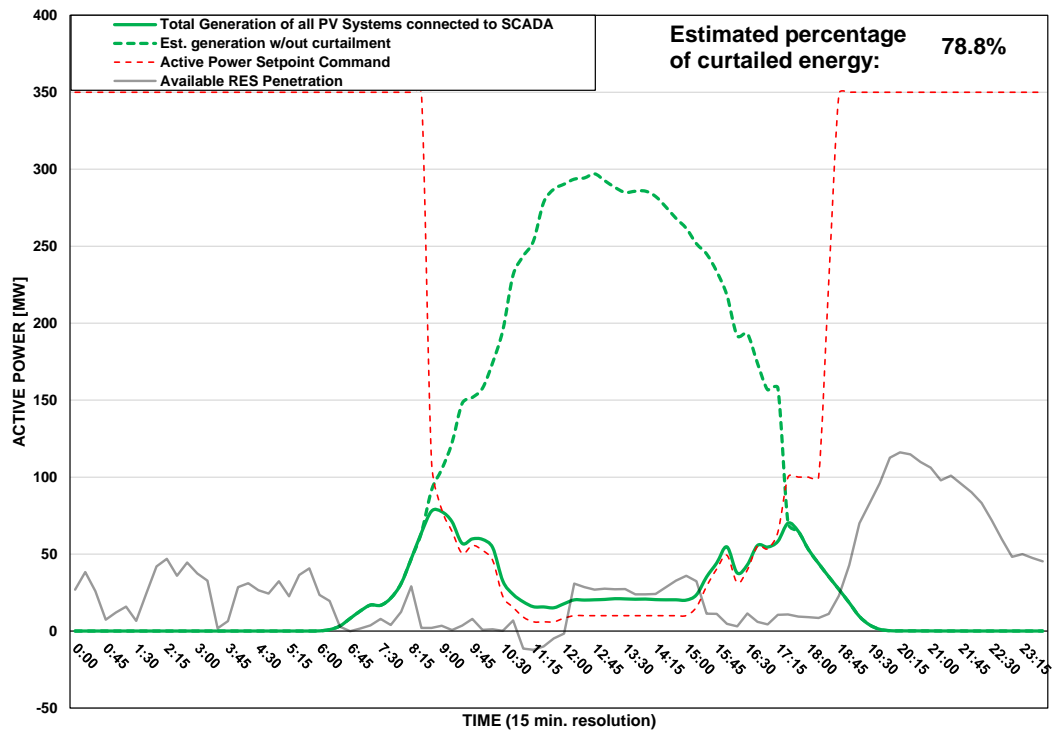
DISTRIBUTION SYSTEM OPERATOR SYSTEM OPERATION



PV Generation Curtailment Report

Date of Curtailment:	18/05/2025	<u>Cut-off of PV Systems using RIPPLE and IoT:</u>
Start of Curtailment	8:45	Cut-off areas using RIPPLE: NIC 1, NIC 3, LIM 2 Cut-off areas using IoT: PV-NIC1, PV-NIC4, PV-LCA/FAM3
End of Curtailment	17:15	
Instruction from TSOC	YES	Start of cut-off: 10:30 End of cut-off: 17:00
Reason of Curtailment:	RES-E Generation Restriction due to low loading of the electrical system	
Total Estimated Energy of the day:	2128.2 MWh	Total Est. Energy of the cut-off PV systems using RIPPLE: 335.1MWh
Total Estimated Curtailed Energy:	1678 MWh	Total Est. Energy of the cut-off PV systems using IoT: 151.2MWh
Percentage of Curtailed Energy:	78.8%	

Scada PVs Generation on 18/05/2025 (curtailment time: 08:45 - 17:15)



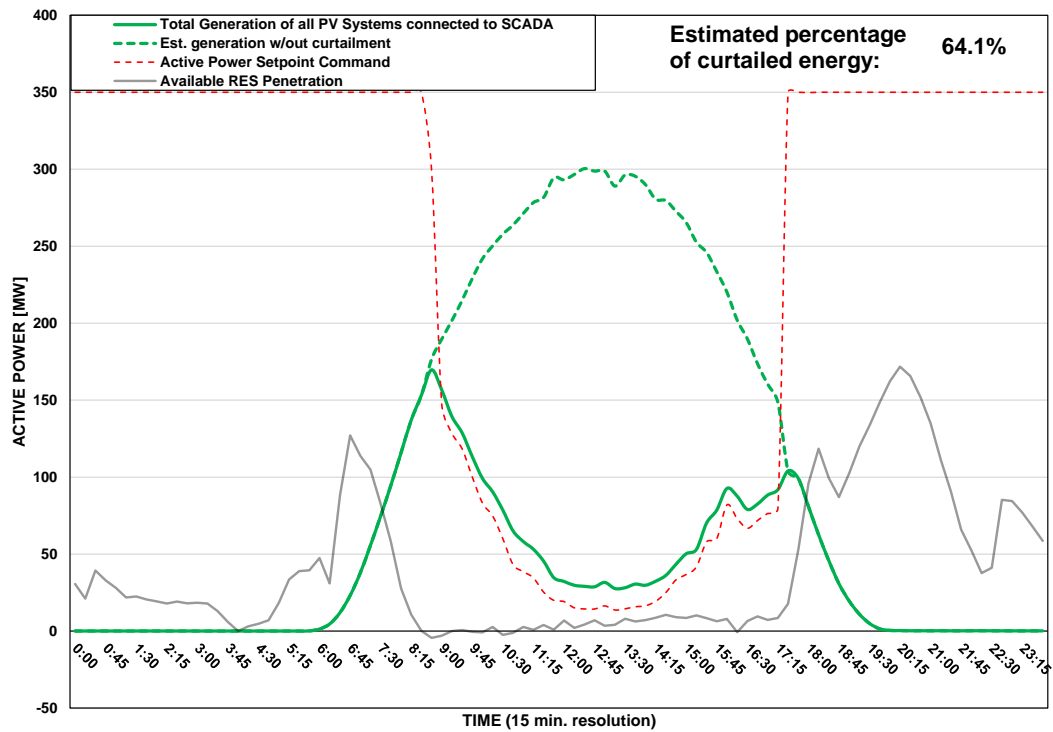
DISTRIBUTION SYSTEM OPERATOR SYSTEM OPERATION



PV Generation Curtailment Report

Date of Curtailment:	19/05/2025
Start of Curtailment	8:45
End of Curtailment	17:15
Instruction from TSOC	YES
Reason of Curtailment:	RES-E Generation Restriction due to low loading of the electrical system
Total Estimated Energy of the day:	2477.1 MWh
Total Estimated Curtailed Energy:	1587.3 MWh
Percentage of Curtailed Energy:	64.1%

Scada PVs Generation on 19/05/2025 (curtailment time: 08:45 - 17:15)



DISTRIBUTION SYSTEM OPERATOR SYSTEM OPERATION

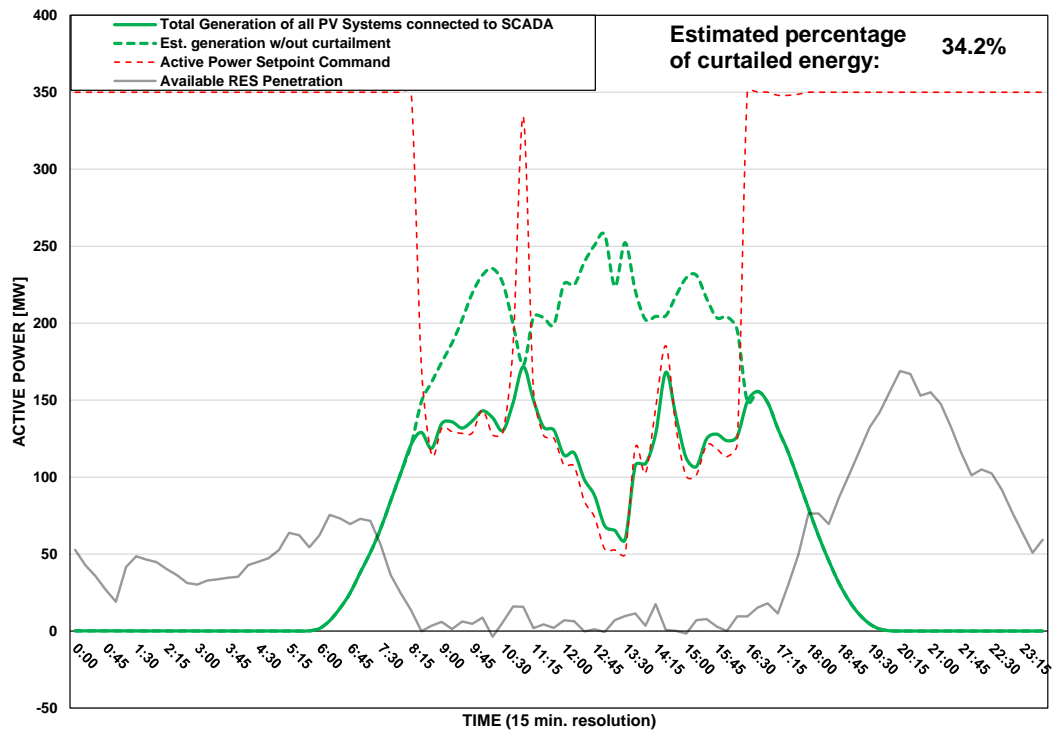


Αρχή Ηλεκτρισμού Κύπρου
Διανομή

PV Generation Curtailment Report

Date of Curtailment:	20/05/2025
Start of Curtailment	8:30
End of Curtailment	16:15
Instruction from TSOC	YES
Reason of Curtailment:	RES-E Generation Restriction due to low loading of the electrical system
Total Estimated Energy of the day:	2084.9 MWh
Total Estimated Curtailed Energy:	713.9 MWh
Percentage of Curtailed Energy:	34.2%

Scada PVs Generation on 20/05/2025 (curtailment time: 08:30 - 16:15)



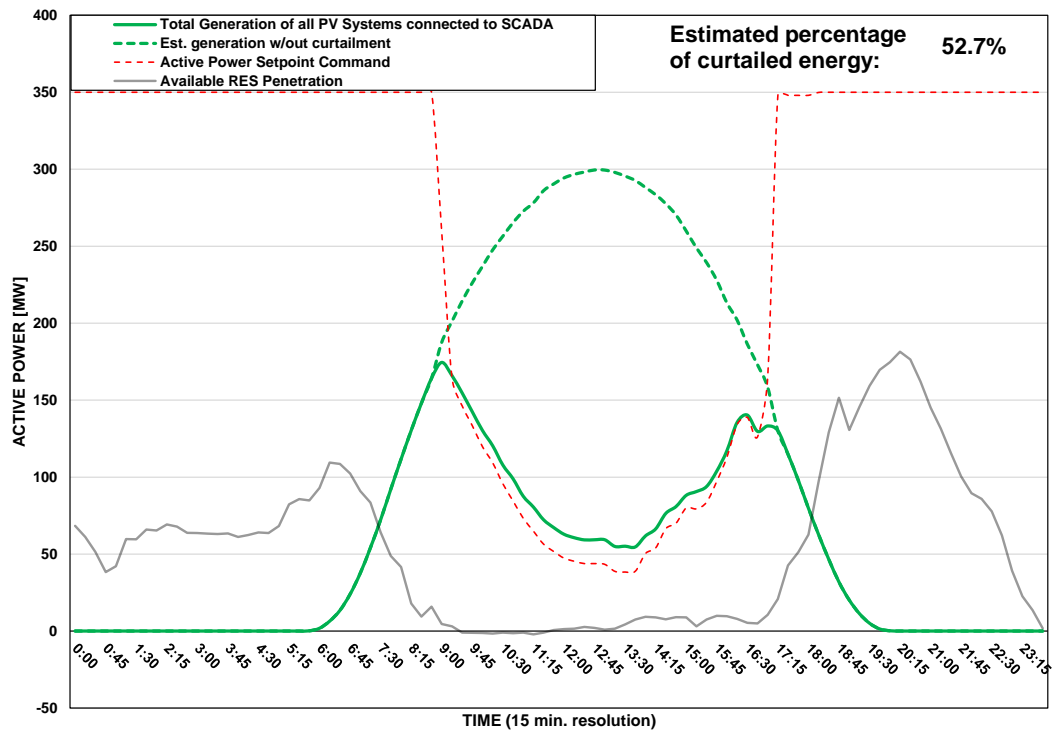
DISTRIBUTION SYSTEM OPERATOR SYSTEM OPERATION



PV Generation Curtailment Report

Date of Curtailment:	21/05/2025
Start of Curtailment	9:00
End of Curtailment	17:00
Instruction from TSOC	YES
Reason of Curtailment:	RES-E Generation Restriction due to low loading of the electrical system
Total Estimated Energy of the day:	2456.2 MWh
Total Estimated Curtailed Energy:	1294.8 MWh
Percentage of Curtailed Energy:	52.7%

Scada PVs Generation on 21/05/2025 (curtailment time: 09:00 - 17:00)



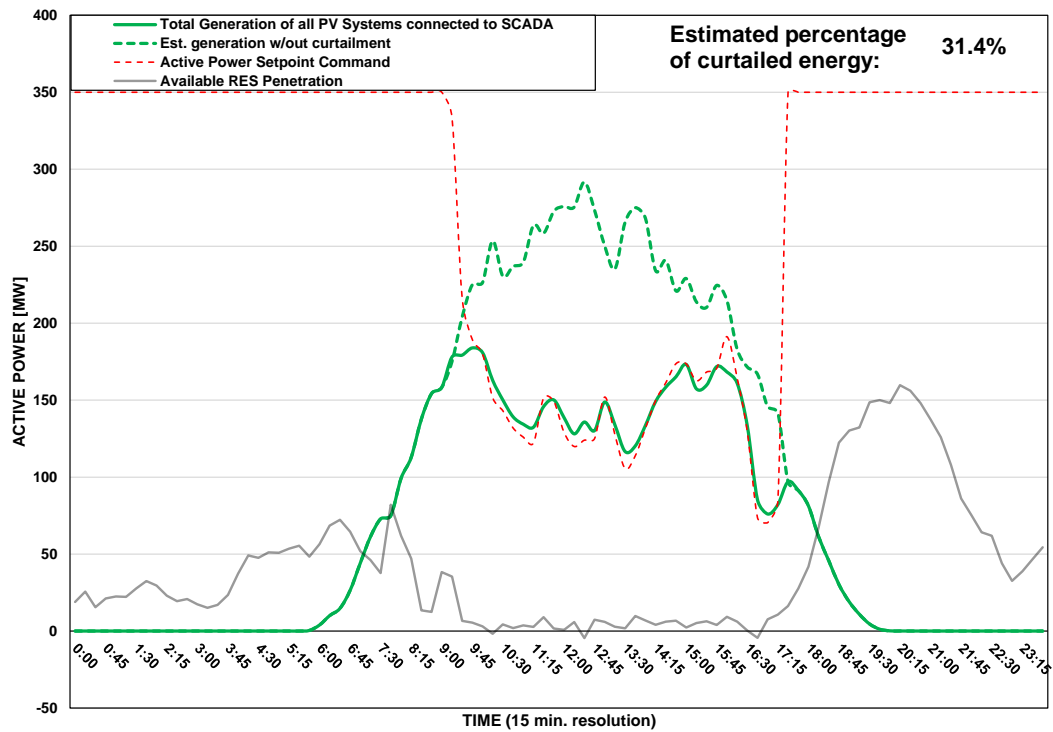
DISTRIBUTION SYSTEM OPERATOR SYSTEM OPERATION



PV Generation Curtailment Report

Date of Curtailment:	22/05/2025
Start of Curtailment	9:15
End of Curtailment	17:15
Instruction from TSOC	YES
Reason of Curtailment:	RES-E Generation Restriction due to low loading of the electrical system
Total Estimated Energy of the day:	2251.8 MWh
Total Estimated Curtailed Energy:	707.1 MWh
Percentage of Curtailed Energy:	31.4%

Scada PVs Generation on 22/05/2025 (curtailment time: 09:15 - 17:15)



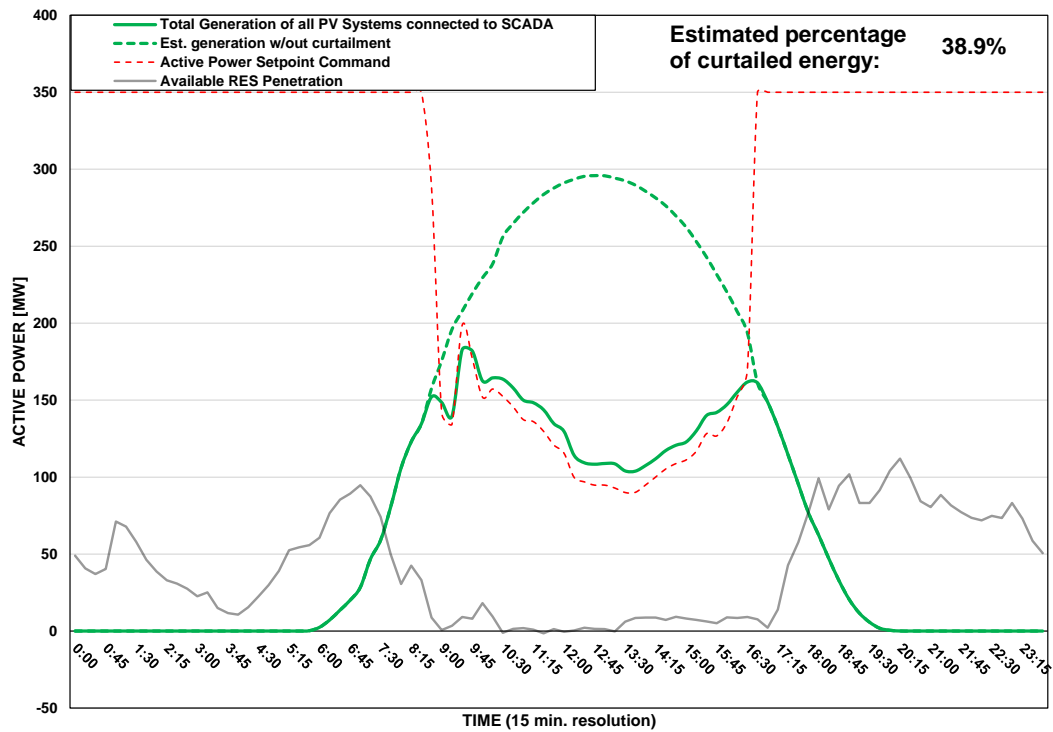
DISTRIBUTION SYSTEM OPERATOR SYSTEM OPERATION



PV Generation Curtailment Report

Date of Curtailment:	23/05/2025
Start of Curtailment	8:45
End of Curtailment	16:30
Instruction from TSOC	YES
Reason of Curtailment:	RES-E Generation Restriction due to low loading of the electrical system
Total Estimated Energy of the day:	2418.6 MWh
Total Estimated Curtailed Energy:	941.5 MWh
Percentage of Curtailed Energy:	38.9%

Scada PVs Generation on 23/05/2025 (curtailment time: 08:45 - 16:30)



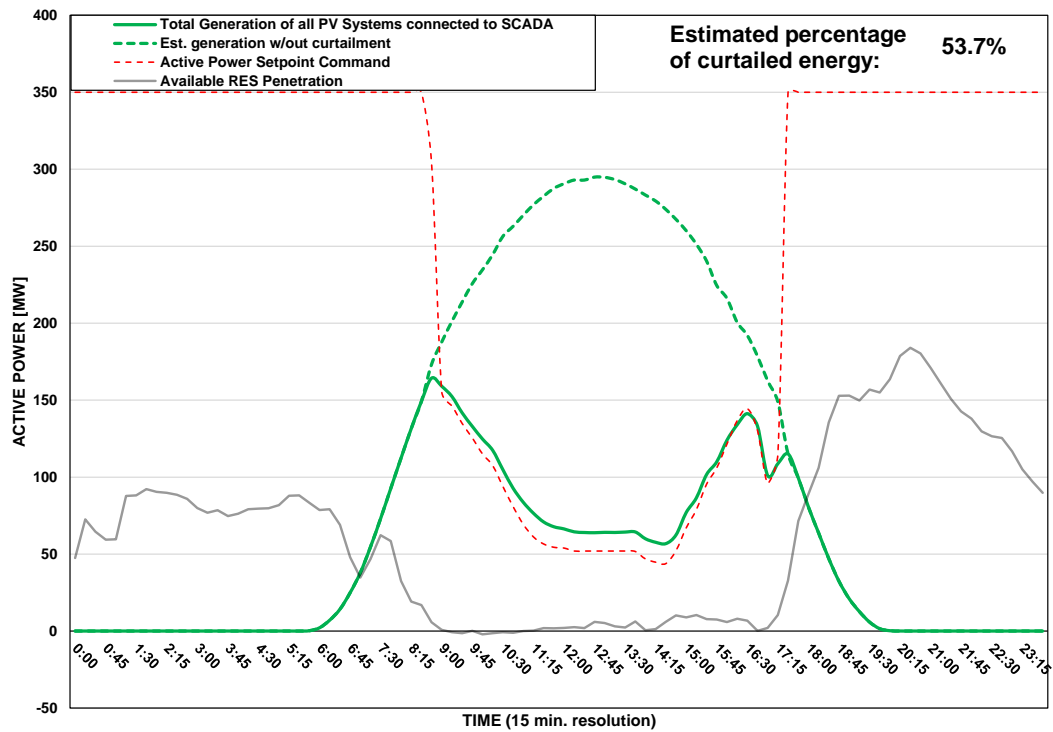
DISTRIBUTION SYSTEM OPERATOR SYSTEM OPERATION



PV Generation Curtailment Report

Date of Curtailment:	24/05/2025
Start of Curtailment	8:45
End of Curtailment	17:15
Instruction from TSOC	YES
Reason of Curtailment:	RES-E Generation Restriction due to low loading of the electrical system
Total Estimated Energy of the day:	2453.4 MWh
Total Estimated Curtailed Energy:	1318.6 MWh
Percentage of Curtailed Energy:	53.7%

Scada PVs Generation on 24/05/2025 (curtailment time: 08:45 - 17:15)



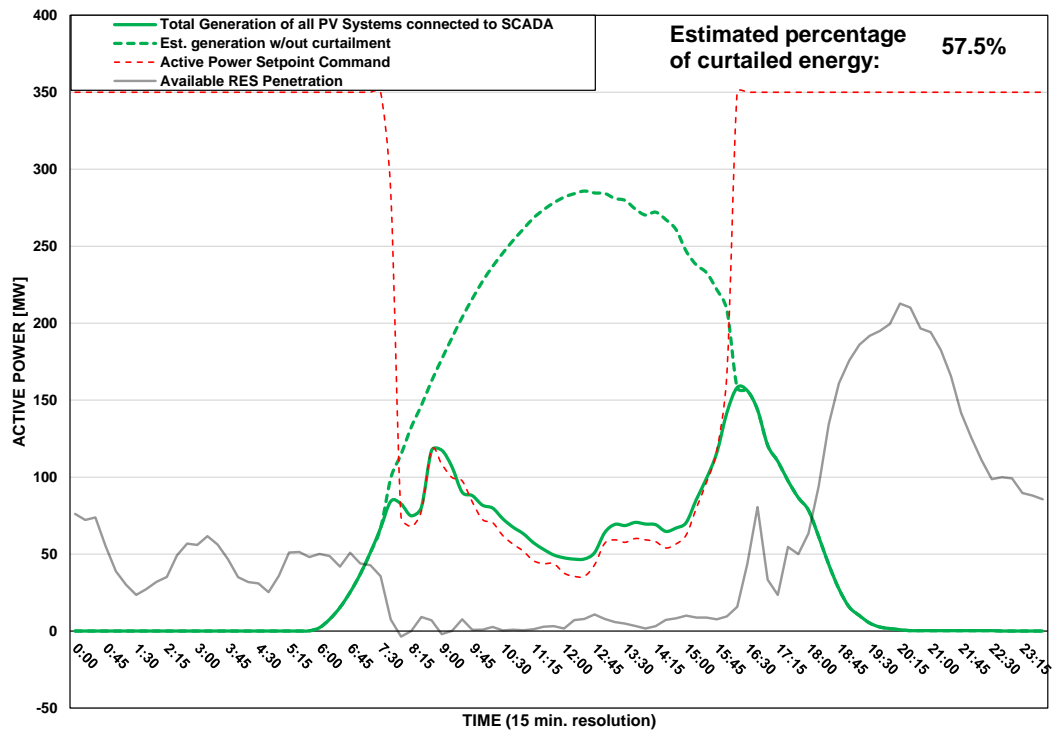
DISTRIBUTION SYSTEM OPERATOR SYSTEM OPERATION



PV Generation Curtailment Report

Date of Curtailment:	25/05/2025
Start of Curtailment	7:45
End of Curtailment	16:00
Instruction from TSOC	YES
Reason of Curtailment:	RES-E Generation Restriction due to low loading of the electrical system
Total Estimated Energy of the day:	2322.2 MWh
Total Estimated Curtailed Energy:	1336.4 MWh
Percentage of Curtailed Energy:	57.5%

Scada PVs Generation on 25/05/2025 (curtailment time: 07:45 - 16:00)



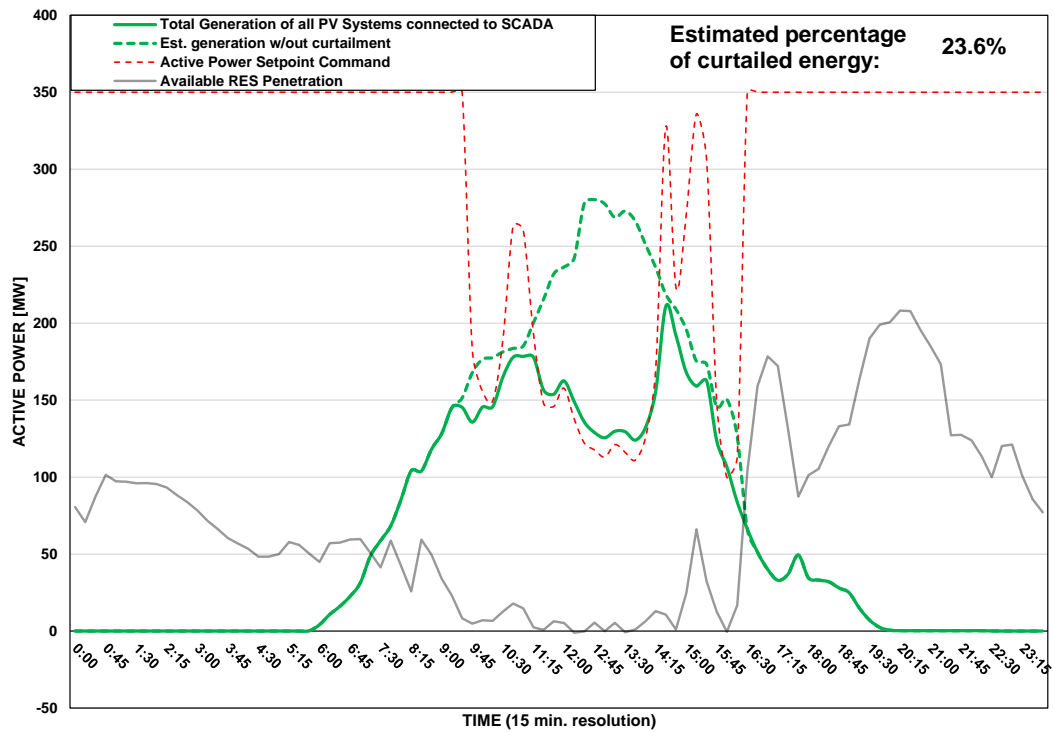
DISTRIBUTION SYSTEM OPERATOR SYSTEM OPERATION



PV Generation Curtailment Report

Date of Curtailment:	26/05/2025
Start of Curtailment	9:30
End of Curtailment	16:15
Instruction from TSOC	YES
Reason of Curtailment:	RES-E Generation Restriction due to low loading of the electrical system
Total Estimated Energy of the day:	1820.1 MWh
Total Estimated Curtailed Energy:	428.7 MWh
Percentage of Curtailed Energy:	23.6%

Scada PVs Generation on 26/05/2025 (curtailment time: 09:30 - 16:15)



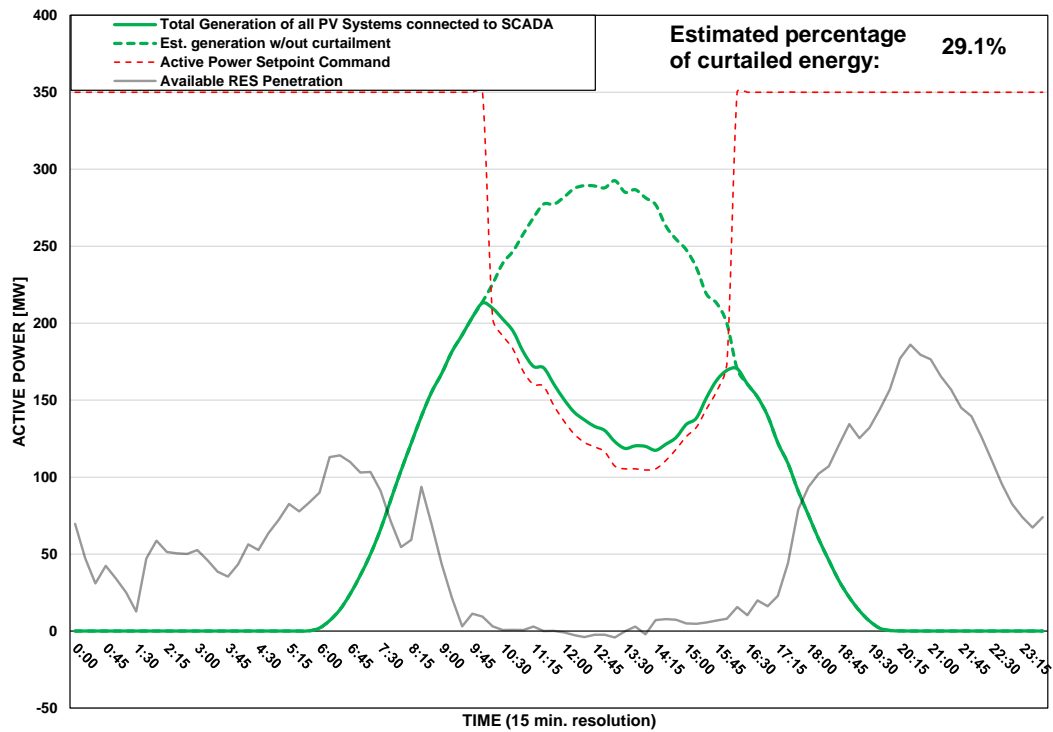
DISTRIBUTION SYSTEM OPERATOR SYSTEM OPERATION



PV Generation Curtailment Report

Date of Curtailment:	27/05/2025
Start of Curtailment	10:00
End of Curtailment	16:00
Instruction from TSOC	YES
Reason of Curtailment:	RES-E Generation Restriction due to low loading of the electrical system
Total Estimated Energy of the day:	2313 MWh
Total Estimated Curtailed Energy:	674.1 MWh
Percentage of Curtailed Energy:	29.1%

Scada PVs Generation on 27/05/2025 (curtailment time: 10:00 - 16:00)



DISTRIBUTION SYSTEM OPERATOR SYSTEM OPERATION

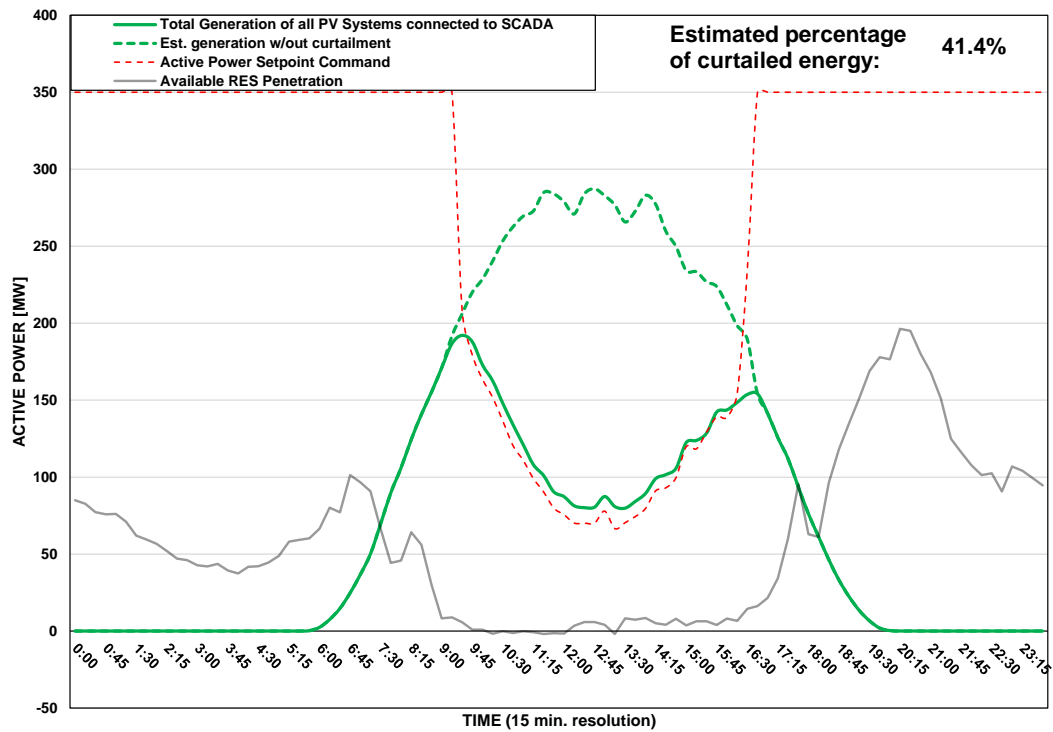


Αρχή Ηλεκτρισμού Κύπρου
Διανομή

PV Generation Curtailment Report

Date of Curtailment:	28/05/2025
Start of Curtailment	9:15
End of Curtailment	16:30
Instruction from TSOC	YES
Reason of Curtailment:	RES-E Generation Restriction due to low loading of the electrical system
Total Estimated Energy of the day:	2351 MWh
Total Estimated Curtailed Energy:	974.2 MWh
Percentage of Curtailed Energy:	41.4%

Scada PVs Generation on 28/05/2025 (curtailment time: 09:15 - 16:30)



DISTRIBUTION SYSTEM OPERATOR SYSTEM OPERATION

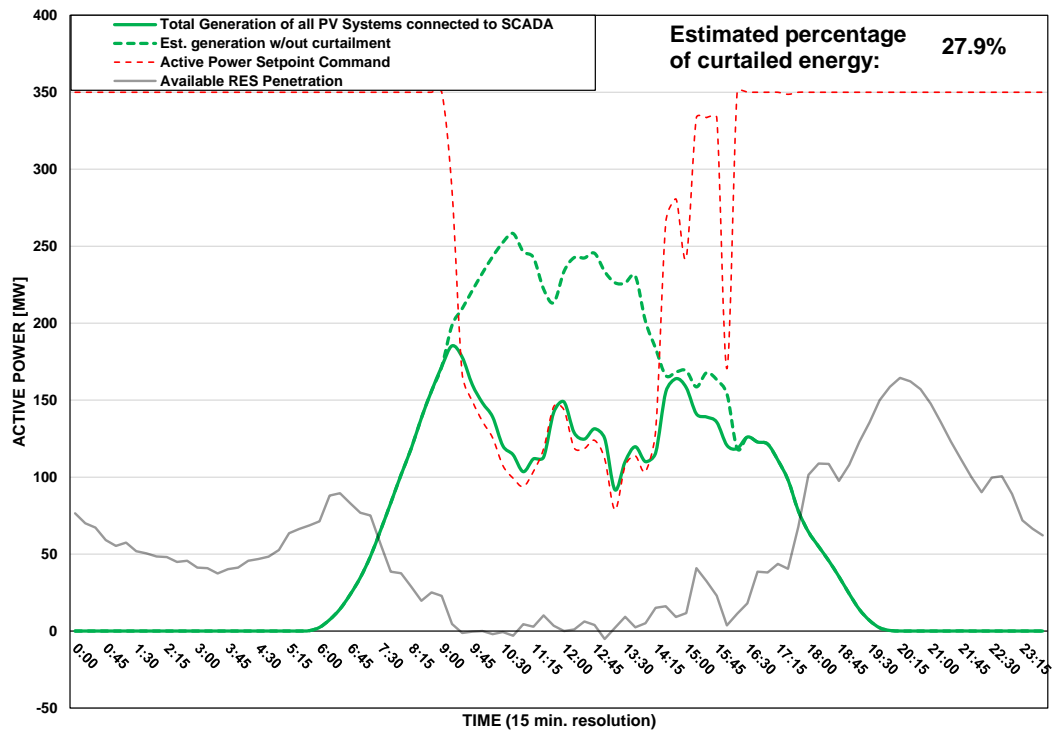


Αρχή Ηλεκτρισμού Κύπρου
Διανομή

PV Generation Curtailment Report

Date of Curtailment:	29/05/2025
Start of Curtailment	9:15
End of Curtailment	16:00
Instruction from TSOC	YES
Reason of Curtailment:	RES-E Generation Restriction due to low loading of the electrical system
Total Estimated Energy of the day:	1986.3 MWh
Total Estimated Curtailed Energy:	554.2 MWh
Percentage of Curtailed Energy:	27.9%

Scada PVs Generation on 29/05/2025 (curtailment time: 09:15 - 16:00)



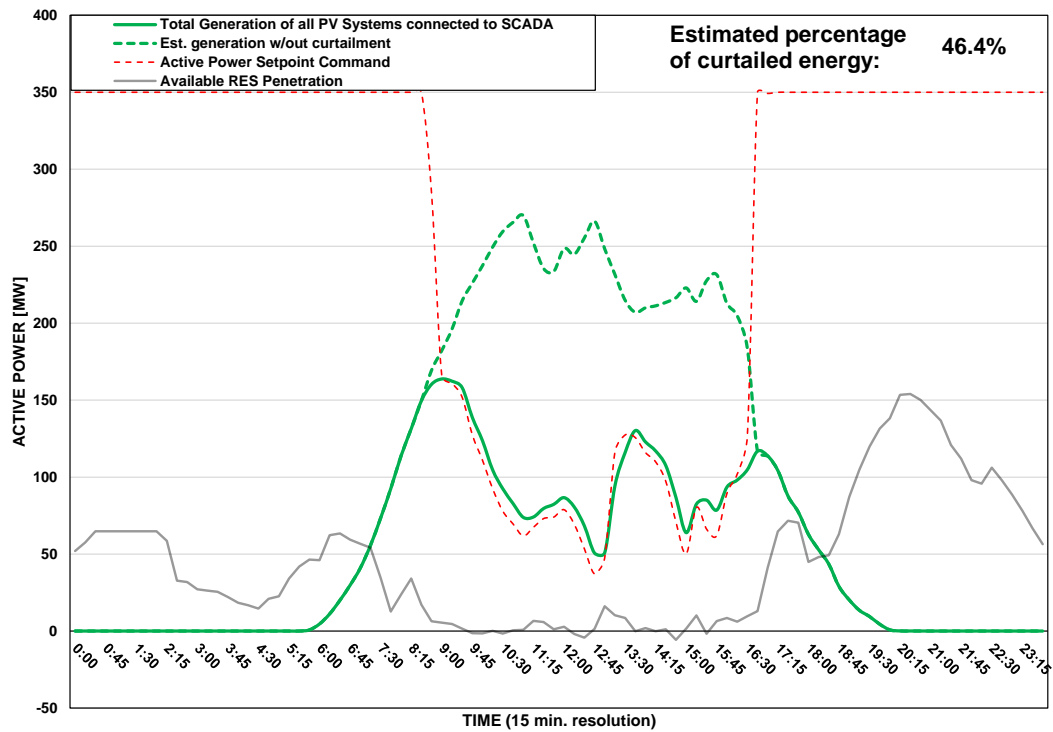
DISTRIBUTION SYSTEM OPERATOR SYSTEM OPERATION



PV Generation Curtailment Report

Date of Curtailment:	30/05/2025
Start of Curtailment	8:45
End of Curtailment	16:30
Instruction from TSOC	YES
Reason of Curtailment:	RES-E Generation Restriction due to low loading of the electrical system
Total Estimated Energy of the day:	2179.5 MWh
Total Estimated Curtailed Energy:	1010.6 MWh
Percentage of Curtailed Energy:	46.4%

Scada PVs Generation on 30/05/2025 (curtailment time: 08:45 - 16:30)



DISTRIBUTION SYSTEM OPERATOR SYSTEM OPERATION



PV Generation Curtailment Report

Date of Curtailment:	31/05/2025
Start of Curtailment	9:30
End of Curtailment	16:30
Instruction from TSOC	YES
Reason of Curtailment:	RES-E Generation Restriction due to low loading of the electrical system
Total Estimated Energy of the day:	1624.2 MWh
Total Estimated Curtailed Energy:	626.4 MWh
Percentage of Curtailed Energy:	38.6%

Scada PVs Generation on 31/05/2025 (curtailment time: 09:30 - 16:30)

